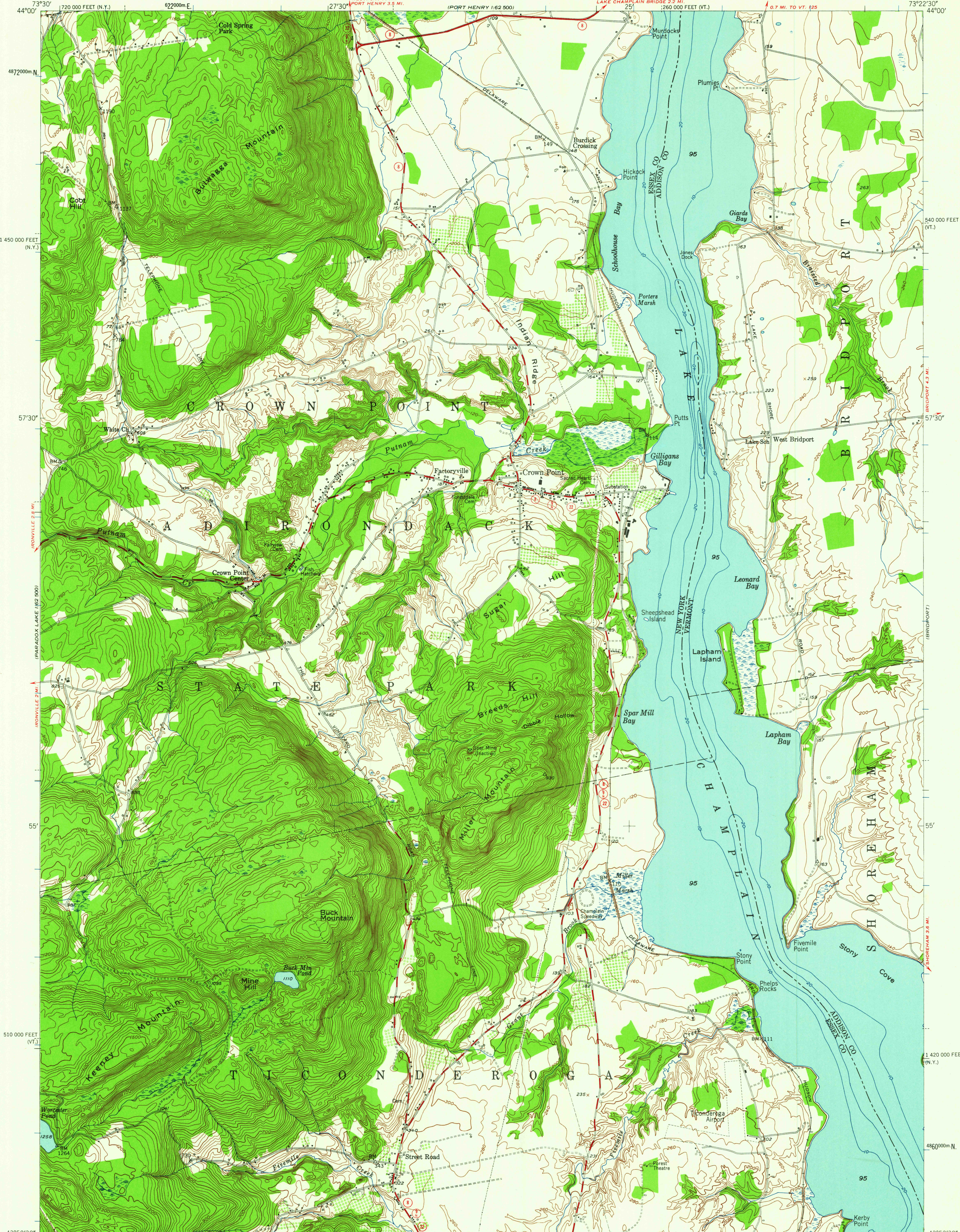


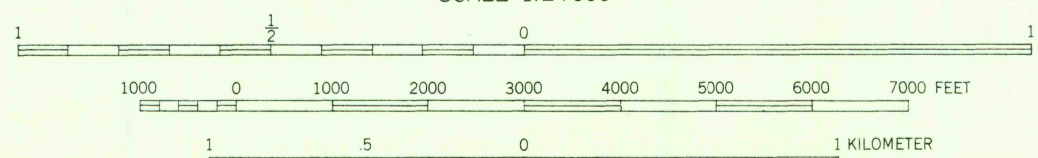
UNITED STATES  
DEPARTMENT OF THE INTERIOR  
GEOLOGICAL SURVEY

CROWN POINT QUADRANGLE  
NEW YORK-VERMONT  
7.5 MINUTE SERIES (TOPOGRAPHIC)  
NW 1/4 TICONDEROGA 15' QUADRANGLE



Maped, edited, and published by the Geological Survey  
Control by USGS and USC&GS  
Topography from aerial photographs by multi-plex methods  
Aerial photographs taken 1942. Field check 1949-1950  
Polyconic projection. 1927 North American datum.  
10,000-foot grids based on New York coordinate system,  
east zone, and Vermont coordinate system.  
1000-meter Universal Transverse Mercator grid ticks,  
zone 18, shown in blue.  
The area shown west of Lake Champlain is in  
the Adirondack State Park

14°  
TRUE NORTH  
MAGNETIC NORTH  
APPROXIMATE MEAN  
DECLINATION, 1950



THIS MAP COMPLIES WITH NATIONAL MAP ACCURACY STANDARDS  
FOR SALE BY U. S. GEOLOGICAL SURVEY, WASHINGTON 25, D. C.  
A FOLDER DESCRIBING TOPOGRAPHIC MAPS AND SYMBOLS IS AVAILABLE ON REQUEST

USGS  
Historical File  
Topographic Division

ROAD CLASSIFICATION  
Medium-duty ——— Light-duty ———  
Unimproved dirt ———  
State Route —○—

CROWN POINT, N.Y.-VT.  
NW 1/4 TICONDEROGA 15' QUADRANGLE  
N4352.5—W7322.5/7.5

1950

USGS  
FILE COPY  
TOPOGRAPHIC DIVISION

FEB - 8 1952