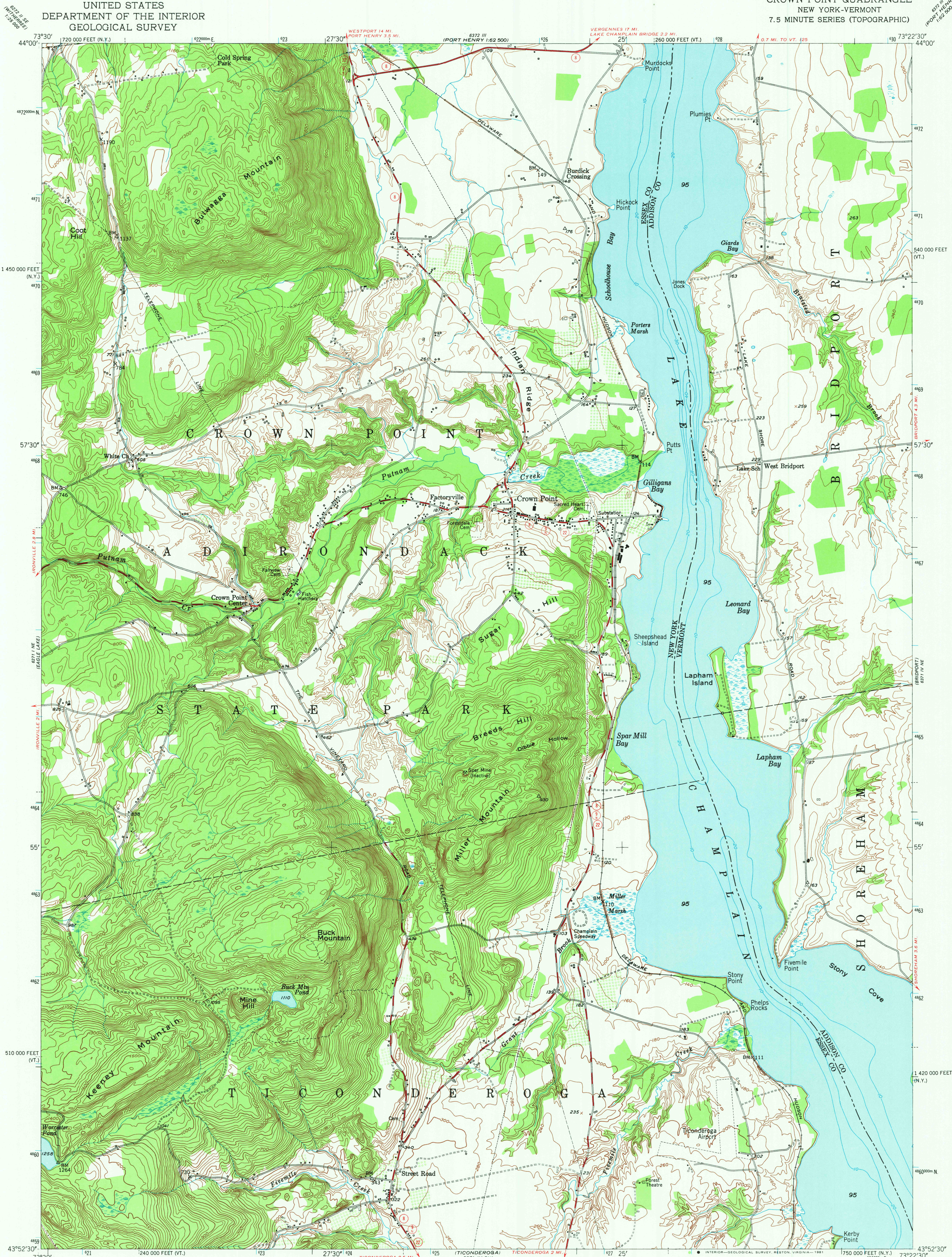


UNITED STATES
DEPARTMENT OF THE INTERIOR
GEOLOGICAL SURVEY

CROWN POINT QUADRANGLE
NEW YORK-VERMONT
7.5 MINUTE SERIES (TOPOGRAPHIC)

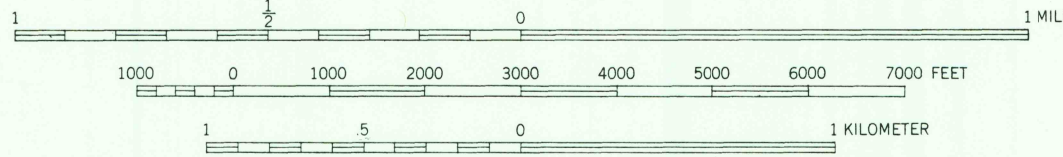
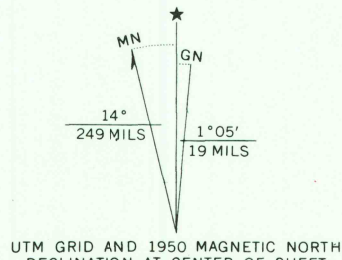


Mapped, edited, and published by the Geological Survey
Control by USGS and USC&GS

Topography by photogrammetric methods from aerial photographs
taken 1942. Field checked 1949-1950

Polyconic projection. 10,000-foot grid ticks based on New York
coordinate system, east zone, and Vermont coordinate system
1000-meter Universal Transverse Mercator grid ticks, zone 18,
shown in blue. 1927 North American Datum. To place on
the predicted North American Datum 1983 move the
projection lines 2 meters south and 34 meters west
as shown by dashed corner ticks

The area shown west of Lake Champlain is in
the Adirondack State Park
There may be private inholdings within the boundaries of
the National or State reservations shown on this map



CONTOUR INTERVAL 20 FEET
NATIONAL GEODETIC VERTICAL DATUM OF 1929
DEPTH CURVES IN FEET—DATUM IS MEAN LOW LAKE LEVEL, 92.5 FEET

THIS MAP COMPLIES WITH NATIONAL MAP ACCURACY STANDARDS
FOR SALE BY U.S. GEOLOGICAL SURVEY, RESTON, VIRGINIA 22092
A FOLDER DESCRIBING TOPOGRAPHIC MAPS AND SYMBOLS IS AVAILABLE ON REQUEST



ROAD CLASSIFICATION
Medium-duty ——— Light-duty ———
Unimproved dirt =-----
State Route (red circle)

NOV 20 1981
RETURN TO:
CROWN POINT, N.Y.-VT. USGS NMD HISTORICAL MAP ARCHIVES
N4352.5-W7322.5/7.5
1950
AMS 6371 IV NW-SERIES V821