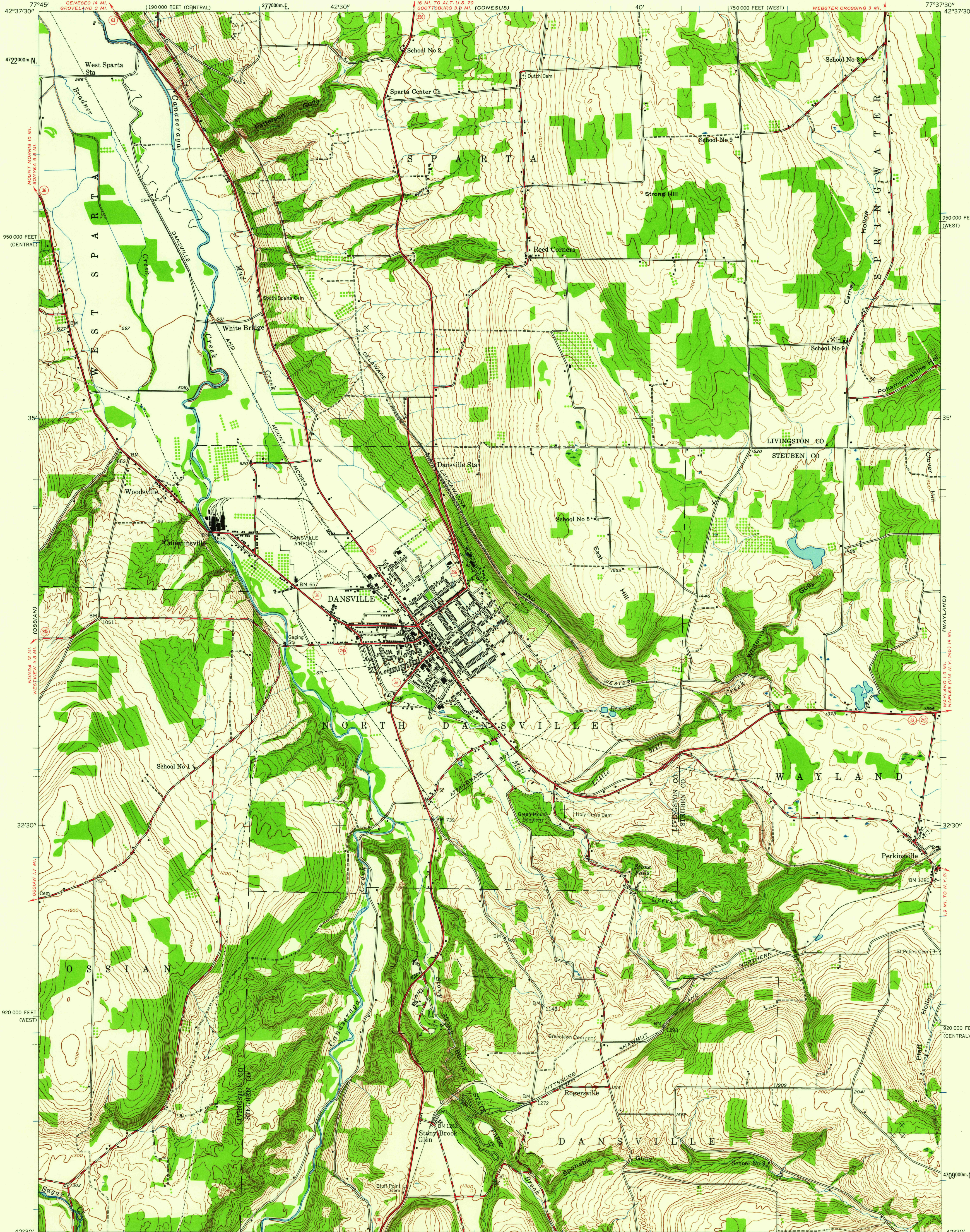


UNITED STATES
DEPARTMENT OF THE INTERIOR
GEOLOGICAL SURVEY

UNITED STATES
DEPARTMENT OF THE ARMY
CORPS OF ENGINEERS

DANSVILLE QUADRANGLE
NEW YORK
7.5 MINUTE SERIES (TOPOGRAPHIC)
SW 1/4 WAYLAND 15' QUADRANGLE



Maped by the Army Map Service
Published for civil use by the Geological Survey
Control by US&GS and TVA
Topography from aerial photographs by photogrammetric methods
Aerial photographs taken 1942. Field check 1942
Polyconic projection. 1927 North American datum
10,000-foot grids based on New York coordinate system,
west and central zones
1000-meter Universal Transverse Mercator grid ticks,
zone 18, shown in blue

APPROXIMATE MEAN
DECLINATION, 1942

SCALE 1:24,000
CONTOUR INTERVAL 20 FEET
DATUM IS MEAN SEA LEVEL

ROAD CLASSIFICATION
Heavy-duty ——— Light-duty ———
Medium-duty ——— Unimproved dirt ———
State Route



DANSVILLE, N. Y.
SW 1/4 WAYLAND 15' QUADRANGLE
N 4230-W 7737.5/7.5

1942

FOR SALE BY U. S. GEOLOGICAL SURVEY, WASHINGTON 25, D. C.
A FOLDER DESCRIBING TOPOGRAPHIC MAPS AND SYMBOLS IS AVAILABLE ON REQUEST

USGS
Historical File
Topographic Division

U.S.G.S.
FILE COPY
TOPOGRAPHIC DIVISION

JAN - 7 1960

3555