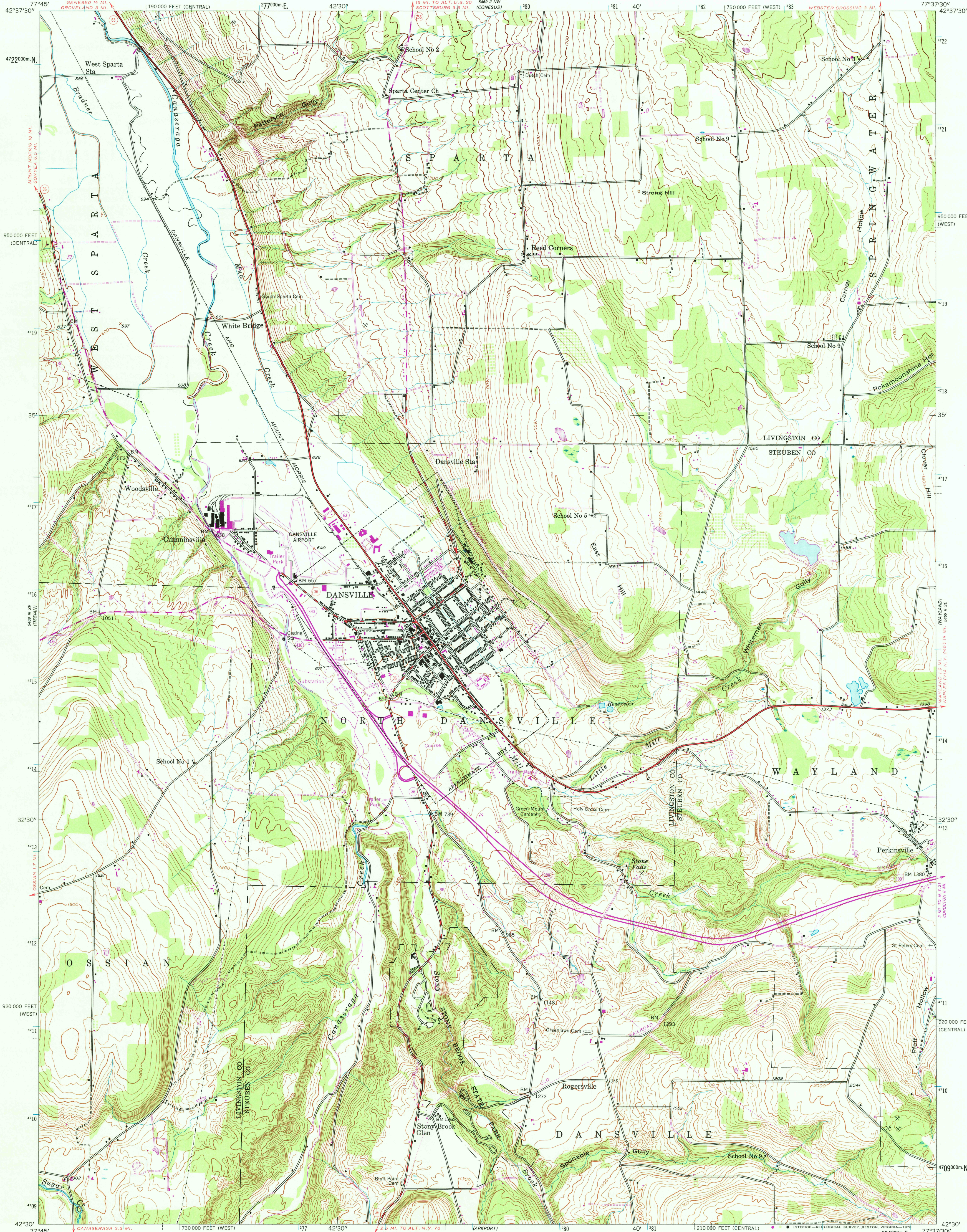


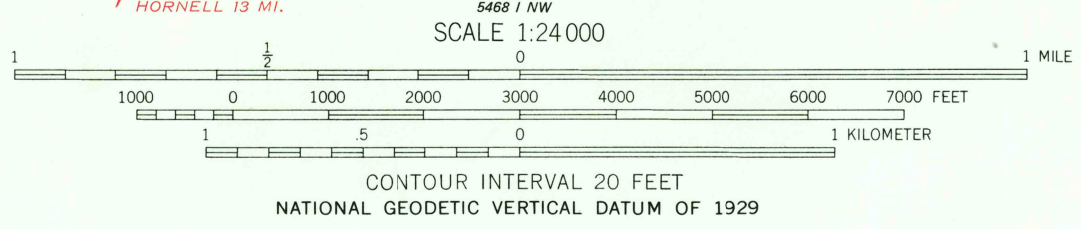
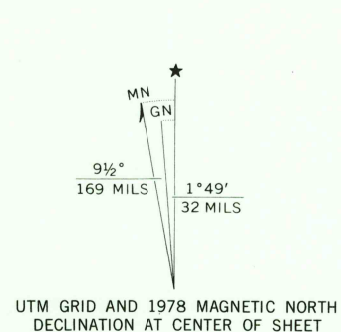
UNITED STATES
DEPARTMENT OF THE INTERIOR
GEOLOGICAL SURVEY

UNITED STATES
DEPARTMENT OF THE ARMY
CORPS OF ENGINEERS

DANSVILLE QUADRANGLE
NEW YORK
7.5 MINUTE SERIES (TOPOGRAPHIC)



Map by the Army Map Service
Published for civil use by the Geological Survey
Control by USC&GS and TVA
Topography from aerial photographs by photogrammetric methods
Aerial photographs taken 1942. Field check 1942
Polyconic projection. 1927 North American datum
10,000-foot grids based on New York coordinate system,
west and central zones
1000-meter Universal Transverse Mercator grid ticks,
zone 18, shown in blue
Revisions shown in purple and woodland compiled from
aerial photographs taken 1976 and other source data.
This information not field checked. Map edited 1978



ROAD CLASSIFICATION
Primary highway, all weather, hard surface
Secondary highway, all weather, hard surface
Light-duty road, all weather, improved surface
Unimproved road, fair or dry weather
Interstate Route
U. S. Route
State Route

USGS
Historical File
Topographic Division

DANSVILLE, N. Y.
N 4230-W 7737.5/7.5
1942
PHOTOREVISED 1978
AMS 5469 II SW-SERIES V821

APR 10 1978
3300

THIS MAP COMPLIES WITH NATIONAL MAP ACCURACY STANDARDS
FOR SALE BY U. S. GEOLOGICAL SURVEY, RESTON, VIRGINIA 22092
A FOLDER DESCRIBING TOPOGRAPHIC MAPS AND SYMBOLS IS AVAILABLE ON REQUEST