

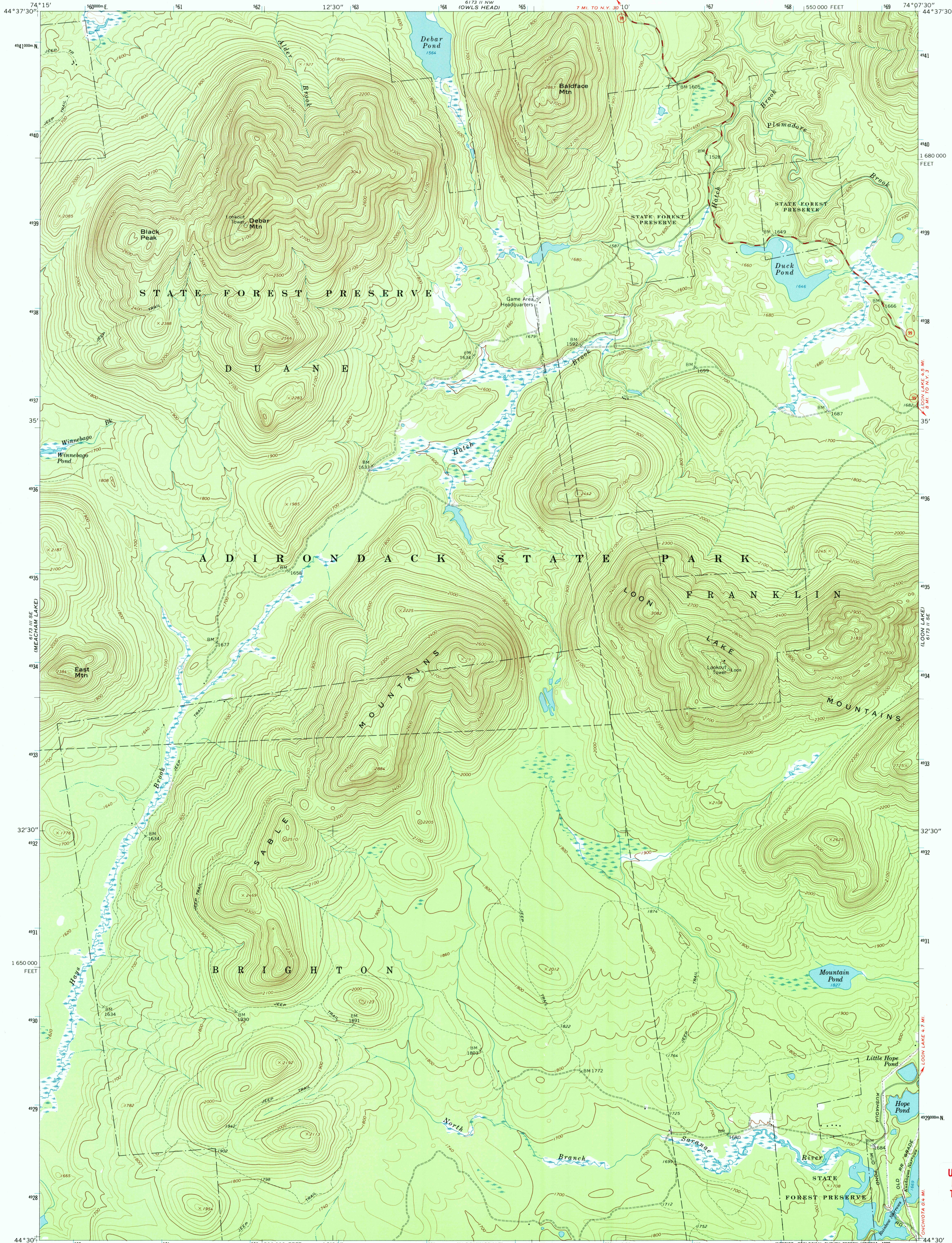


U.S. DEPARTMENT OF THE INTERIOR  
U.S. GEOLOGICAL SURVEY

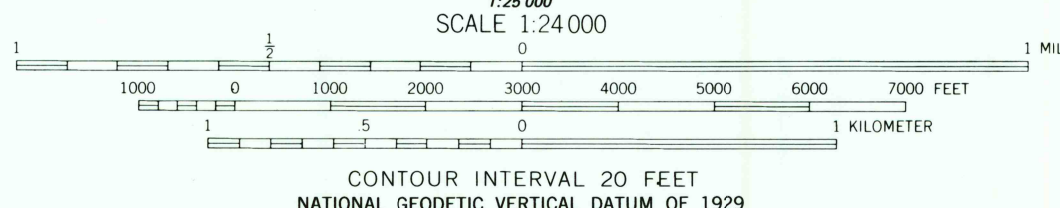
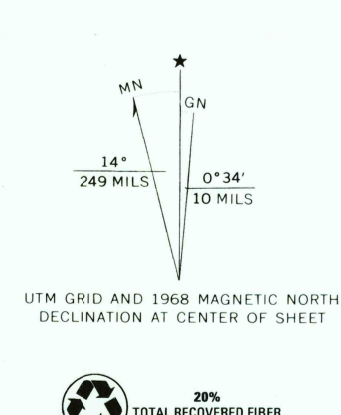
STATE OF NEW YORK  
DEPARTMENT OF TRANSPORTATION

DEBAR MOUNTAIN QUADRANGLE  
NEW YORK—FRANKLIN CO.  
7.5 MINUTE SERIES (TOPOGRAPHIC)  
SW/4 LOON LAKE 15' QUADRANGLE

6173 II NE  
(RAGGED LAKE)



Maped, edited, and published by the Geological Survey  
Control by USGS and USC&GS  
Topography by photogrammetric methods from aerial  
photographs taken 1965. Field checked 1968  
Polyconic projection. 1927 North American datum  
10,000-foot grid based on New York coordinate system, east zone  
1000-meter Universal Transverse Mercator grid ticks,  
zone 18, shown in blue  
To place on the predicted North American Datum 1983  
move the projection lines 2 meters south and  
32 meters west as shown by dashed corner ticks  
Map photinspected 1980  
No major culture or drainage changes observed



ROAD CLASSIFICATION  
Secondary highway, all weather, Light-duty road, all weather,  
hard surface  
Unimproved road, fair or dry  
weather  
State Route

DEBAR MOUNTAIN, N. Y.  
SW/4 LOON LAKE 15' QUADRANGLE  
44074-E2-TF-024  
1968  
PHOTOINSPECTED 1980  
DMA 6173 II SW—SERIES V821

USGS Library  
Reston, VA.  
Topo Archive

