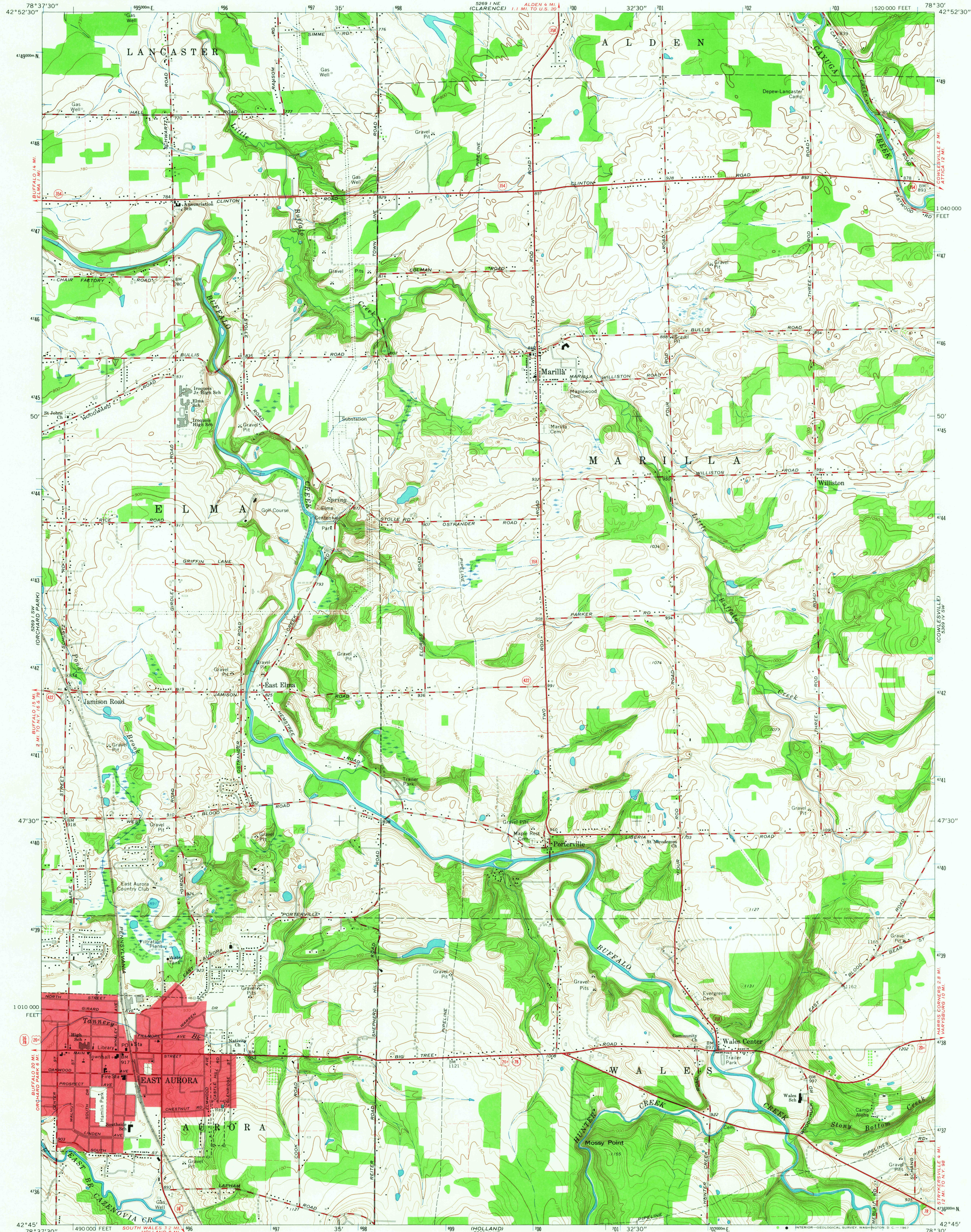
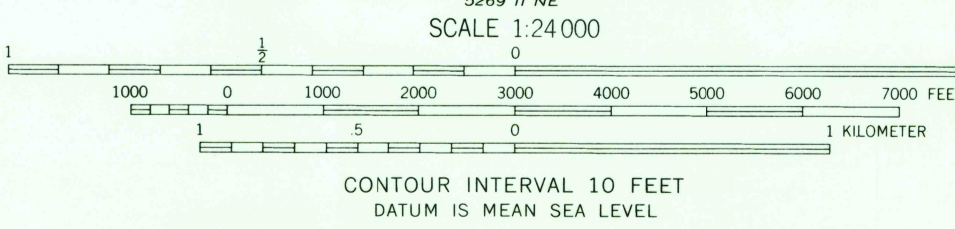
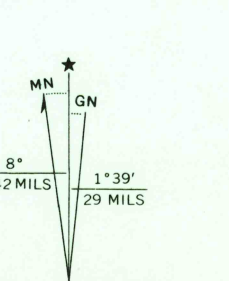


UNITED STATES
DEPARTMENT OF THE INTERIOR
GEOLOGICAL SURVEY

EAST AURORA QUADRANGLE
NEW YORK-ERIE CO.
7.5 MINUTE SERIES (TOPOGRAPHIC)
SE/4 DEPEW 15' QUADRANGLE



Mapped, edited, and published by the Geological Survey in cooperation with New York Department of Public Works Control by USGS, USC&GS, and USCE
Planimetry compiled by U. S. Corps of Engineers from aerial photographs taken 1942. Topography by planimetric surveys 1948. Revised from aerial photographs taken 1963. Field checked 1965
Polyconic projection. 1927 North American datum. 10,000-foot grid based on New York coordinate system, west zone 1000-meter Universal Transverse Mercator grid ticks, zone 17, shown in blue
Fine red dashed lines indicate selected fence and field lines where generally visible on aerial photographs. This information is unchecked
Red tint indicates area in which only landmark buildings are shown



USGS
Historical File
Topographic Division

ROAD CLASSIFICATION
Heavy-duty ——— Light-duty ———
Medium-duty ——— Unimproved dirt ———
U.S. Route ——— State Route ———



U.S.G.S. JUN 5 1967
FILE COPY
TOPOGRAPHIC DIVISION
EAST AURORA, N. Y.
SE/4 DEPEW 15' QUADRANGLE
N4245-W7830/7.5
1965

AMS 5269 I SE-SERIES V821