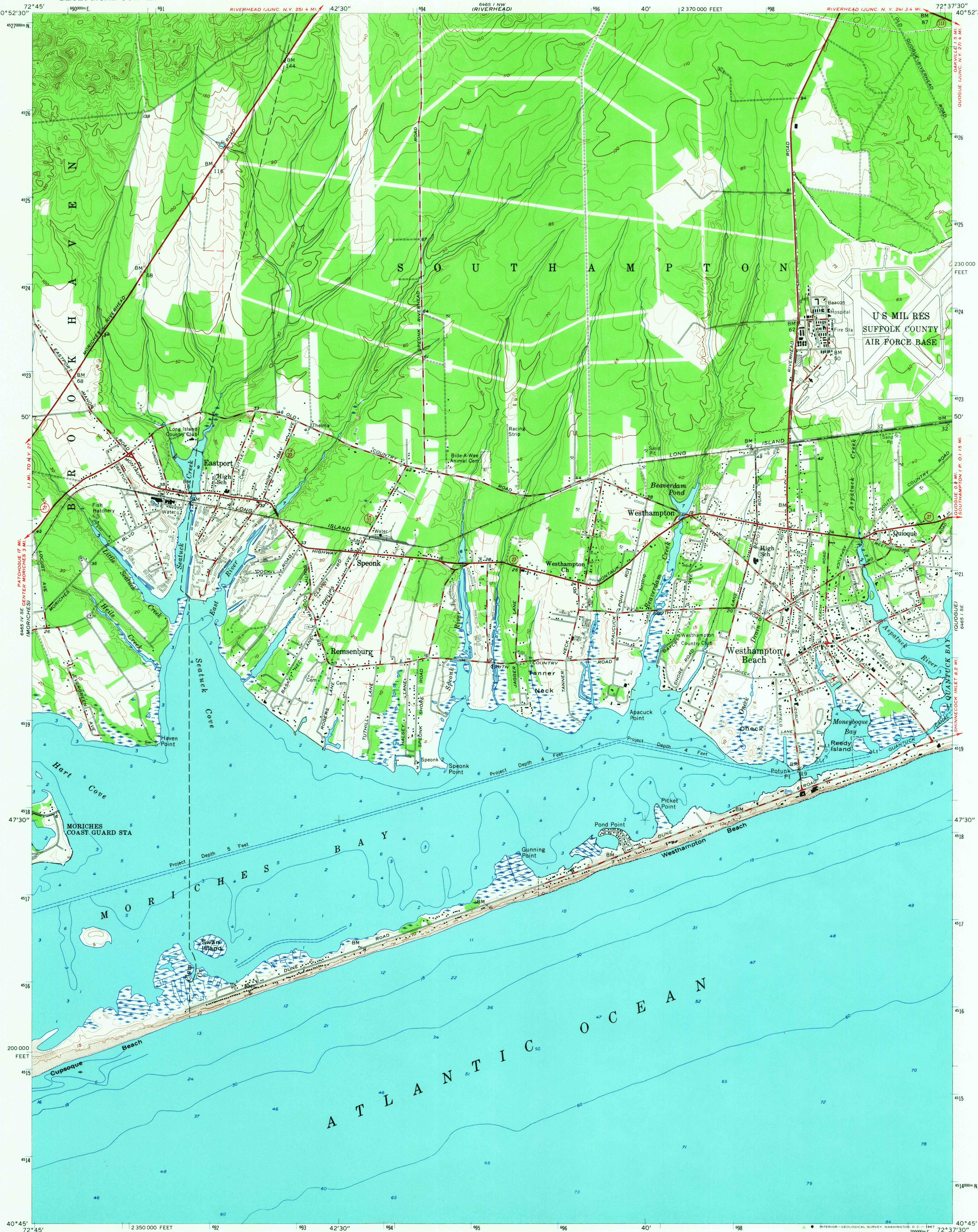


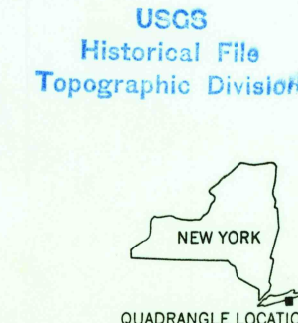
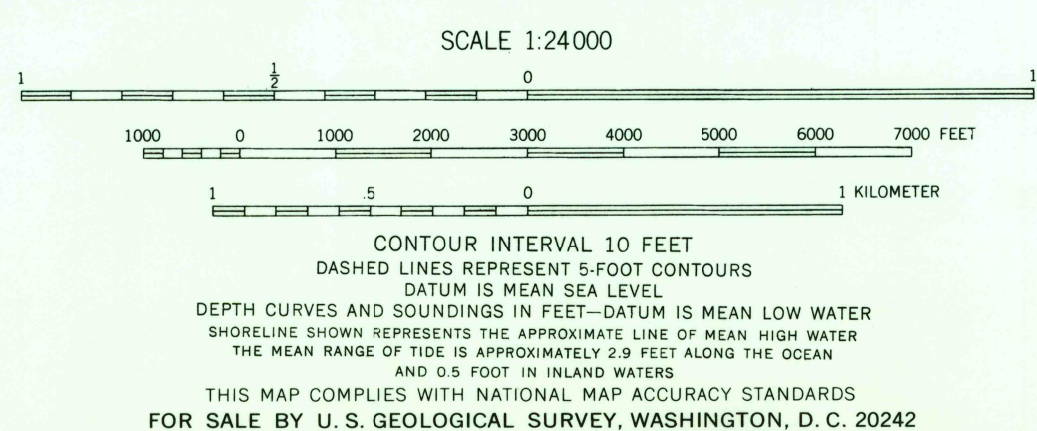
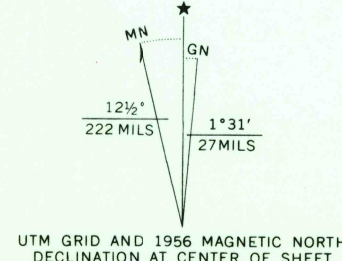
UNITED STATES  
DEPARTMENT OF THE INTERIOR  
GEOLOGICAL SURVEY

EASTPORT QUADRANGLE  
NEW YORK-SUFFOLK CO.  
7.5 MINUTE SERIES (TOPOGRAPHIC)  
SW/4 RIVERHEAD 15' QUADRANGLE

6465 I NE  
(MATTITUON)



Mapped, edited, and published by the Geological Survey  
Control by USC&GS  
Culture and drainage in part compiled from aerial photographs  
taken 1954. Topography by planetable surveys 1956.  
Hydrography compiled from USC&GS charts 578 (1956)  
and 1214 (1954)  
Polyconic projection, 1927 North American datum  
10,000-foot grid based on New York coordinate system,  
Long Island zone  
1000-meter Universal Transverse Mercator grid ticks,  
zone 18, shown in blue  
Fine red dashed lines indicate selected fence and field lines  
visible on aerial photographs. This information is unchecked



ROAD CLASSIFICATION  
Heavy-duty ——— Light-duty ———  
Medium-duty ——— Unimproved dirt ———  
State Route ———  
U.S.G.S. EASTPORT, N.Y.  
SW/4 RIVERHEAD 15' QUADRANGLE  
N4045-W7237.5/7.5  
1956  
AMS 6465 I SW-SERIES V821

4295  
MAR 23 1967