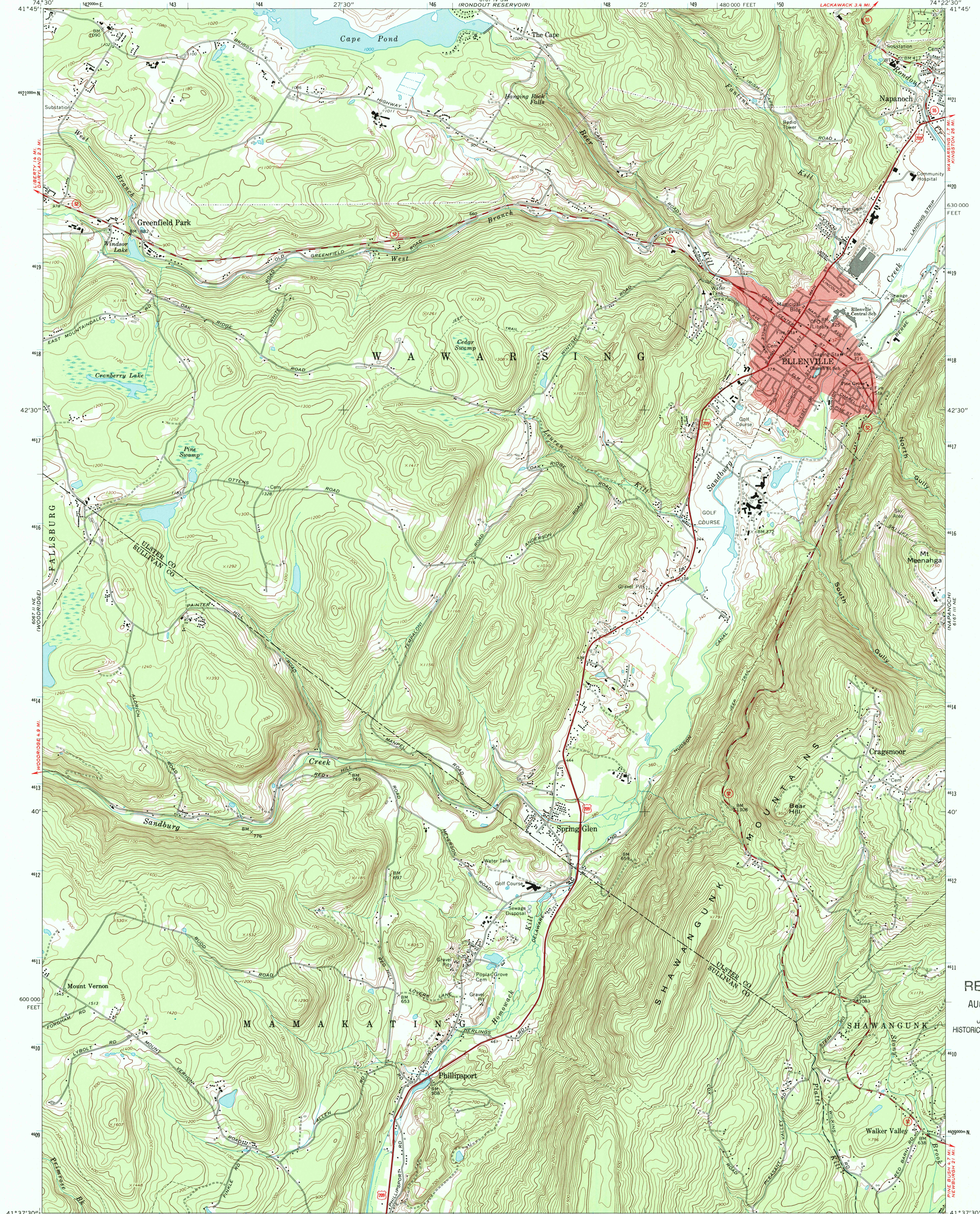




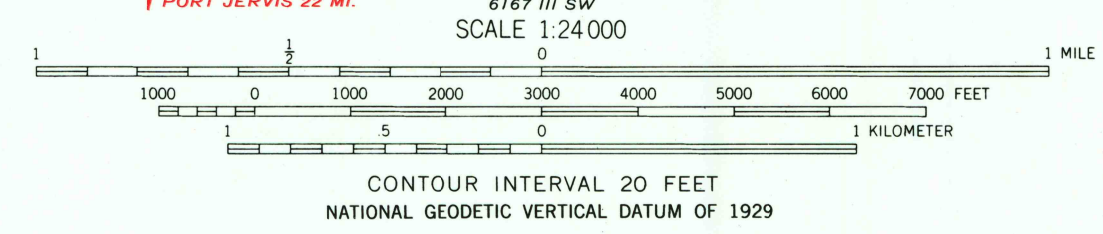
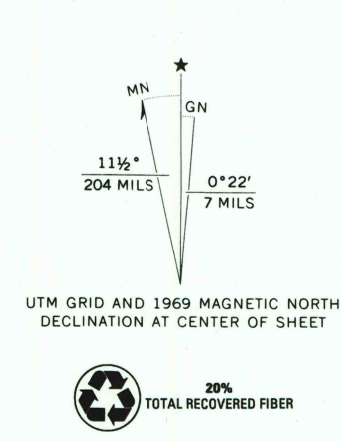
U.S. DEPARTMENT OF THE INTERIOR  
U.S. GEOLOGICAL SURVEY

ELLENVILLE QUADRANGLE  
NEW YORK  
7.5 MINUTE SERIES (TOPOGRAPHIC)



RECEIVED  
AUG 31 2001  
USGS/NIW  
HISTORICAL MAP ARCHIVES

Mapped by the Army Map Service  
Edited and published by the Geological Survey  
Revised by the Geological Survey in cooperation with New York  
Department of Transportation  
Control by USGS and USC&GS  
Topography by photogrammetric methods from aerial photographs  
taken 1942. Field checked 1942. Revised from aerial  
photographs taken 1968. Field checked 1969.  
Polyconic projection. 1927 North American datum  
10,000-foot grid based on New York coordinate system, east zone  
1000-meter Universal Transverse Mercator grid ticks, zone 18,  
shown in blue.  
Fine red dashed lines indicate selected fence and field lines where  
generally visible on aerial photographs. This information is unchecked  
Red tint indicates area in which only landmark buildings are shown



ROAD CLASSIFICATION  
Primary highway, all weather, hard surface  
Secondary highway, all weather, hard surface  
Light-duty road, all weather, improved surface  
Unimproved road, fair or dry weather  
U. S. Route  
State Route

FOR SALE BY U.S. GEOLOGICAL SURVEY, DENVER, COLORADO 80225  
OR RESTON, VIRGINIA 22092  
A FOLDER DESCRIBING TOPOGRAPHIC MAPS AND SYMBOLS IS AVAILABLE ON REQUEST

ELLENVILLE, N. Y.  
41074-F4-TF-024  
1969  
PHOTOINSPECTED 1976  
DMA 6167 III NW-SERIES V821

To place on the predicted North American Datum 1983,  
move the projection lines 6 meters south and  
34 meters west as shown by dashed corner ticks  
Map photoinspected 1976  
No major culture or drainage changes observed

