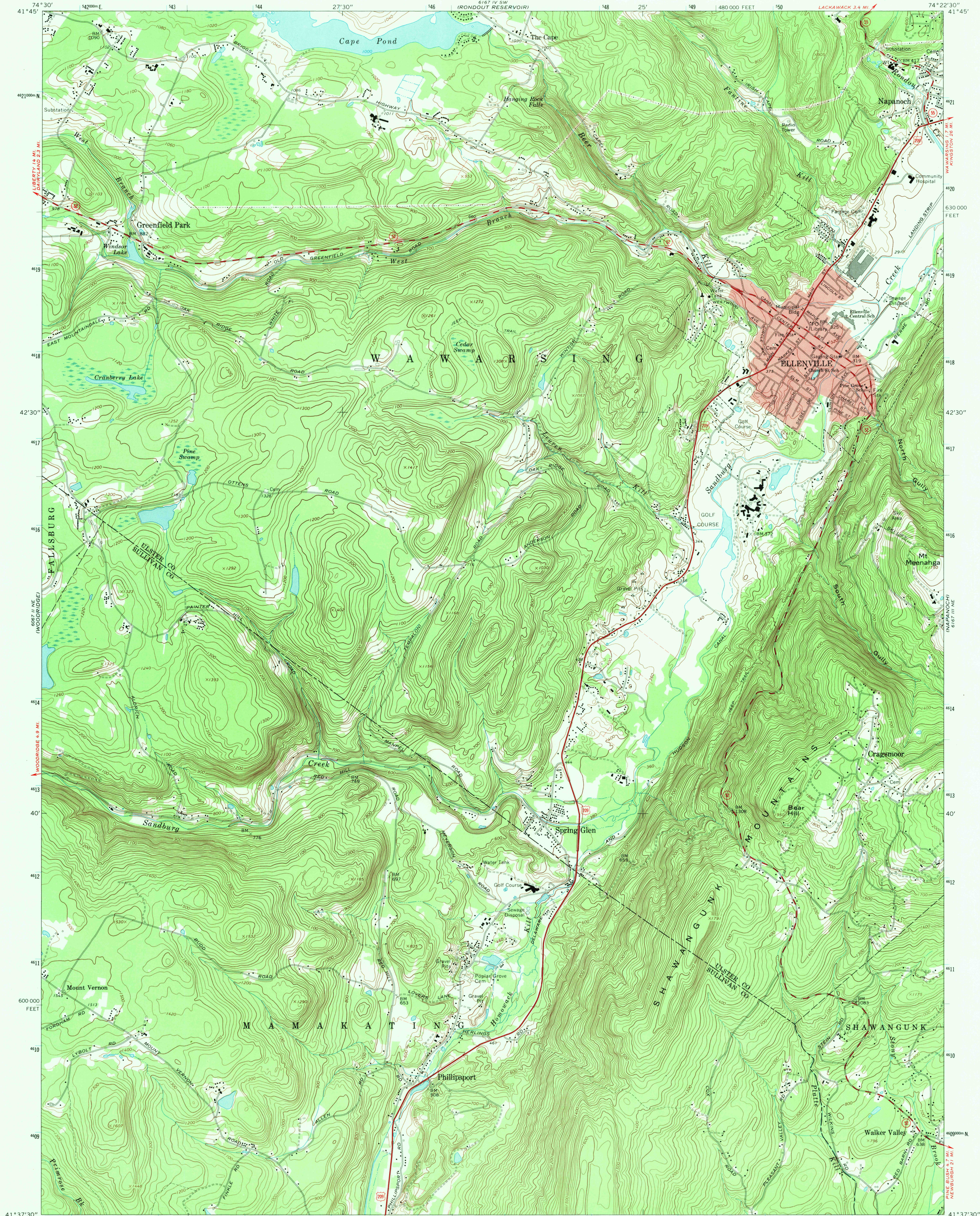


UNITED STATES  
DEPARTMENT OF THE INTERIOR  
GEOLOGICAL SURVEY

ELLENVILLE QUADRANGLE  
NEW YORK  
7.5 MINUTE SERIES (TOPOGRAPHIC)

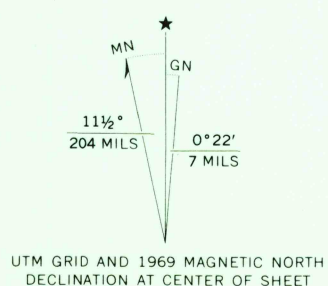


Mapped by the Army Map Service  
Edited and published by the Geological Survey  
Revised by the Geological Survey in cooperation with New York  
Department of Transportation

Control by USGS and USC&GS  
Topography by photogrammetric methods from aerial photographs  
taken 1942. Field checked 1942. Revised from aerial  
photographs taken 1968. Field checked 1969

Polyconic projection. 1927 North American datum  
10,000-foot grid based on New York coordinate system, east zone  
1000-meter Universal Transverse Mercator grid ticks, zone 18,  
shown in blue

Fine red dashed lines indicate selected fence and field lines where  
generally visible on aerial photographs. This information is unchecked  
Red tint indicates area in which only landmark buildings are shown



FOR SALE BY U.S. GEOLOGICAL SURVEY, WASHINGTON, D. C. 20242  
A FOLDER DESCRIBING TOPOGRAPHIC MAPS AND SYMBOLS IS AVAILABLE ON REQUEST

ROAD CLASSIFICATION  
Primary highway, all weather, hard surface  
Secondary highway, all weather, hard surface  
Light-duty road, all weather, improved surface  
Unimproved road, fair or dry weather  
U. S. Route  
State Route



ELLENVILLE, N. Y.  
N4137.5—W7422.5/7.5

1969

AMS 6167 III NW—SERIES V821

SEP 15 1971