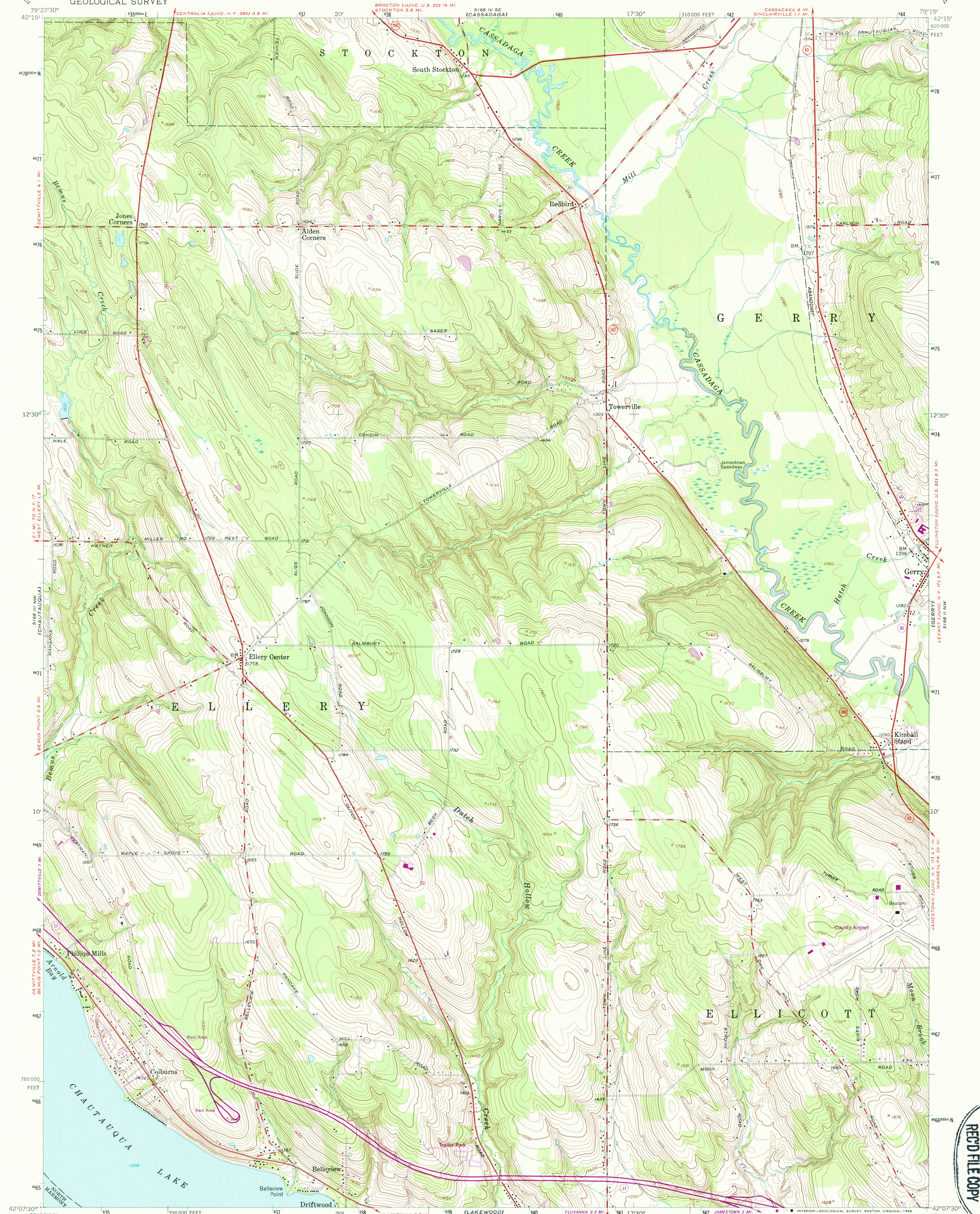


5168 IV SW  
(HARTFIELD)

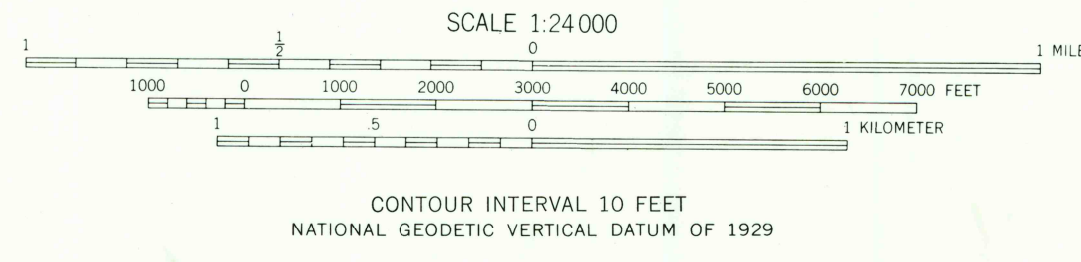
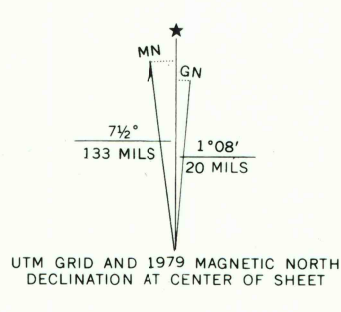
UNITED STATES  
DEPARTMENT OF THE INTERIOR  
GEOLOGICAL SURVEY

ELLERY CENTER QUADRANGLE  
NEW YORK—CHAUTAUQUA CO.  
7.5 MINUTE SERIES (TOPOGRAPHIC)

5168 IV SW  
(HARTFIELD)



Mapped, edited, and published by the Geological Survey  
Control by USGS and USCGS  
Topography from aerial photographs by photogrammetric  
methods. Aerial photographs taken 1953. Field check 1954  
Polyconic projection. 1927 North American datum  
10,000-foot grid based on New York coordinate system,  
west zone  
Unchecked elevations are shown in brown  
1000-meter Universal Transverse Mercator grid ticks,  
zone 17, shown in blue  
Revisions shown in purple and woodland compiled from  
aerial photographs taken 1976 and other source data  
This information not field checked. Map edited 1979



ROAD CLASSIFICATION	
Heavy-duty	Light-duty
Medium-duty	Unimproved dirt
U. S. Route	State Route

ELLERY CENTER, N. Y.  
42079-B3-TF-024

THIS MAP COMPLIES WITH NATIONAL MAP ACCURACY STANDARDS  
FOR SALE BY U. S. GEOLOGICAL SURVEY  
DENVER, COLORADO 80225, OR RESTON, VIRGINIA 22092  
A FOLDER DESCRIBING TOPOGRAPHIC MAPS AND SYMBOLS IS AVAILABLE ON REQUEST

To place on the predicted North American Datum 1983,  
move the projection lines 2 meters south and  
20 meters west as shown by dashed corner ticks

1954  
PHOTOREVISED 1979  
DMA 5168 III NE-SERIES V821

USGS AND HISTORICAL MAP  
OCT 07 1989  
REC'D FILE COPY