

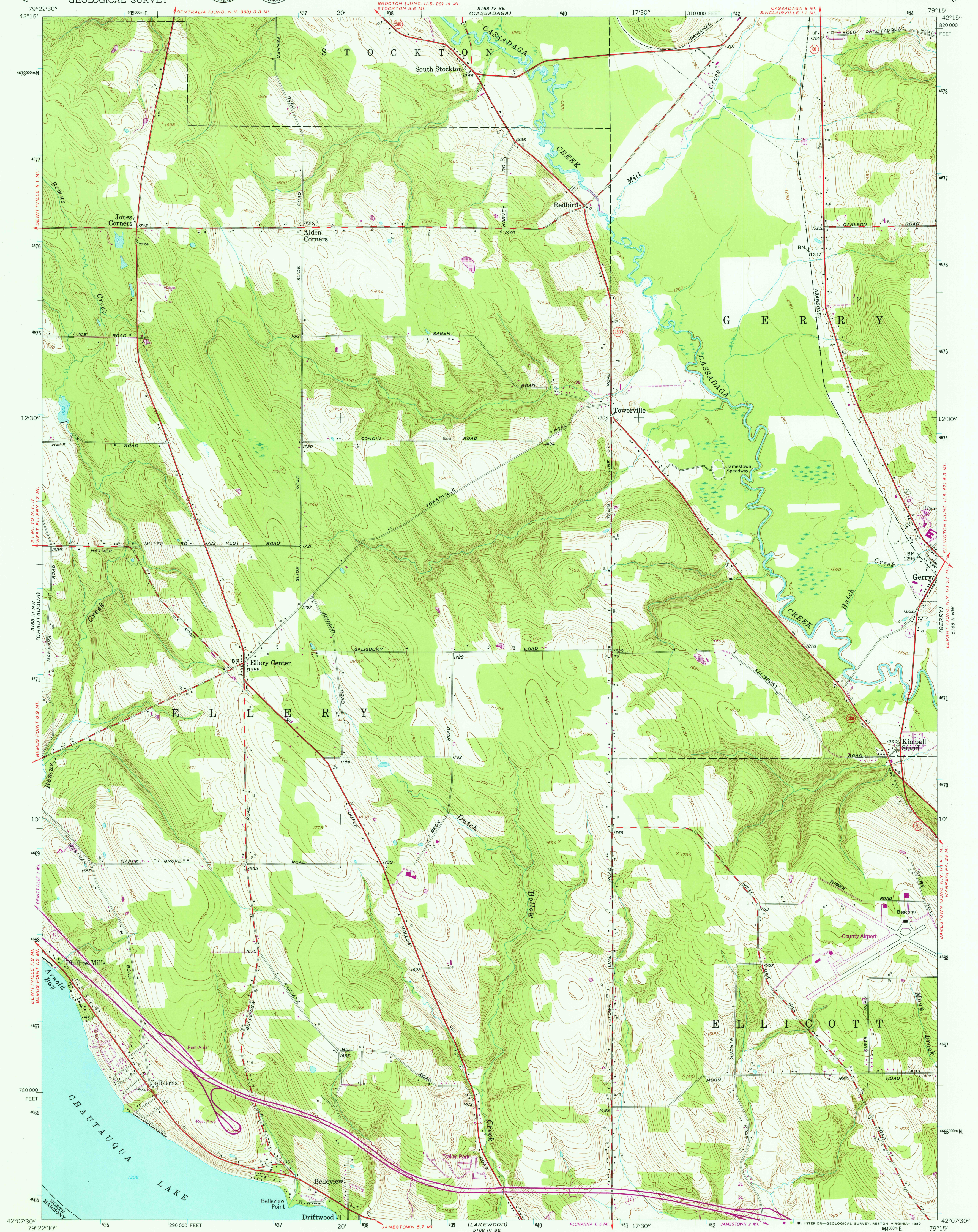
5168 III SW
(PARTIAL)

UNITED STATES
DEPARTMENT OF THE INTERIOR
GEOLOGICAL SURVEY



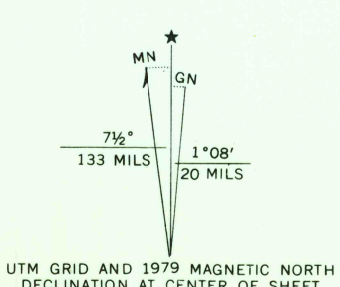
ELLERY CENTER QUADRANGLE
NEW YORK—CHAUTAUQUA CO.
7.5 MINUTE SERIES (TOPOGRAPHIC)

5168 III SW
(PARTIAL)



(PANAMA)
5168 III SW

Mapped, edited, and published by the Geological Survey
Control by USGS and USC&GS
Topography from aerial photographs by photogrammetric methods. Aerial photographs taken 1953. Field check 1954
Polyconic projection, 1927 North American datum
10,000-foot grid based on New York coordinate system, west zone
Unchecked elevations are shown in brown
1000-meter Universal Transverse Mercator grid ticks, zone 17, shown in blue
Revisions shown in purple and woodland compiled from aerial photographs taken 1976 and other source data
This information not field checked. Map edited 1979



SCALE 1:24,000
CONTOUR INTERVAL 10 FEET
NATIONAL GEODETIC VERTICAL DATUM OF 1929
THIS MAP COMPLIES WITH NATIONAL MAP ACCURACY STANDARDS
FOR SALE BY U.S. GEOLOGICAL SURVEY, RESTON VIRGINIA 22092
A FOLDER DESCRIBING TOPOGRAPHIC MAPS AND SYMBOLS IS AVAILABLE ON REQUEST



ROAD CLASSIFICATION
Heavy-duty ——— Light-duty ———
Medium-duty ——— Unimproved dirt ———
U. S. Route ——— State Route ———
USGS
Historical File
Topographic Division
ELLERY CENTER, N. Y.
N 4207.5 — W 7915.7.5
1954
PHOTOREVISED 1979
AMS 5168 III NE—SERIES V821

APR 24 1980
1255