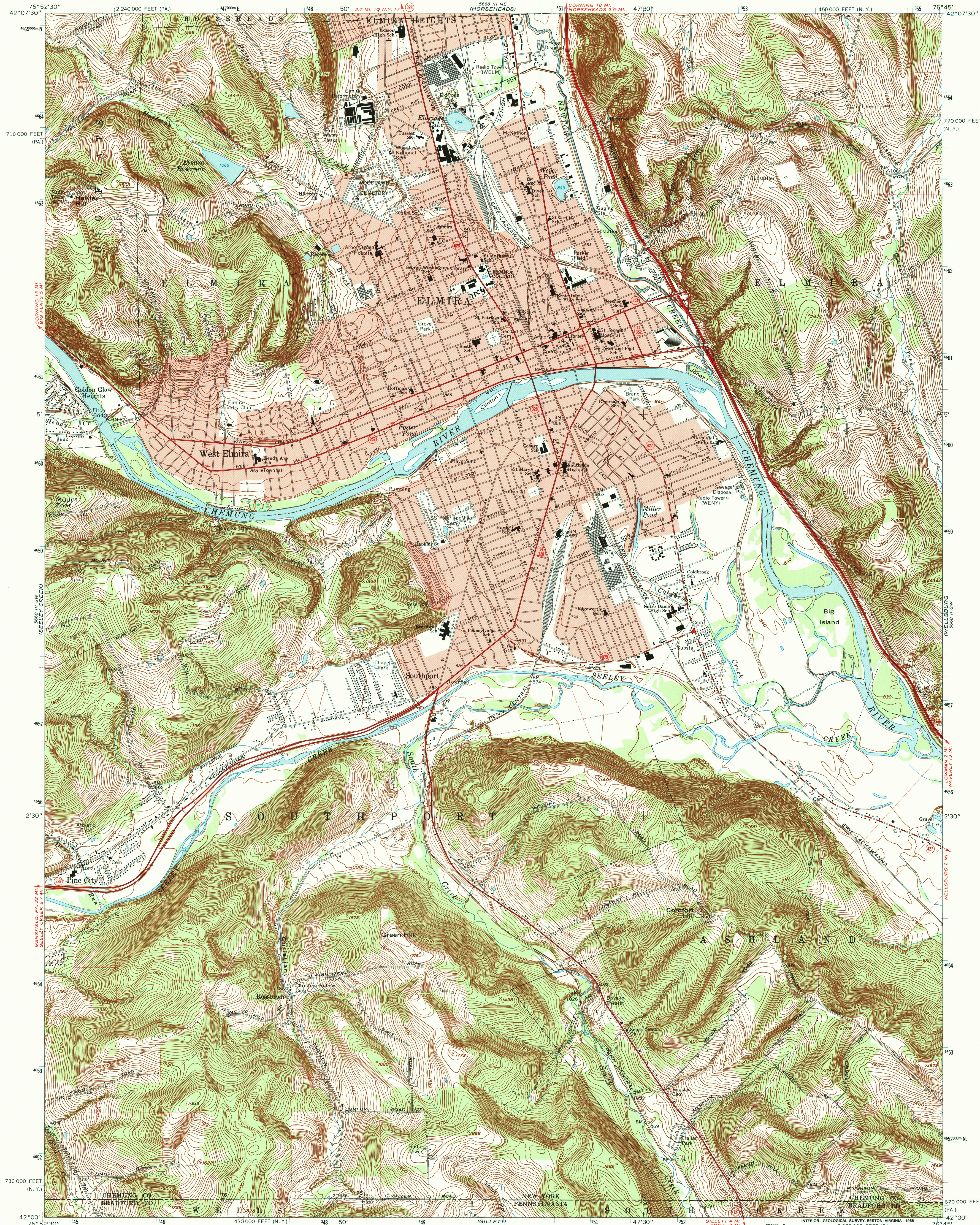


UNITED STATES
DEPARTMENT OF THE INTERIOR
GEOLOGICAL SURVEY

ELMIRA QUADRANGLE
NEW YORK-PENNSYLVANIA
7.5 MINUTE SERIES (TOPOGRAPHIC)
SE/4 ELMIRA 15' QUADRANGLE



Maped, edited, and published by the Geological Survey
Revised in cooperation with New York Department of Transportation
Control by USGS and USC&GS

Topography by photogrammetric methods from aerial
photographs taken 1948. Field checked 1953. Revised
from aerial photographs taken 1968. Field checked 1969

Polycyclic projection. 1927 North American datum
10,000-foot grids based on New York coordinate system,
central zone, and Pennsylvania coordinate system, north zone
1000-meter Universal Transverse Mercator grid ticks,
zone 18, shown in blue

Fine red dashed lines indicate selected fence and field lines where
generally visible on aerial photographs. This information is unchecked
Red tint indicates areas in which only landmark buildings are shown

SCALE 1:24,000
1 000 0 1000 2000 3000 4000 5000 6000 7000 FEET
1 KILOMETER
CONTOUR INTERVAL 10 FEET
NATIONAL GEODETIC VERTICAL DATUM OF 1929

THIS MAP COMPLIES WITH NATIONAL MAP ACCURACY STANDARDS
FOR SALE BY U.S. GEOLOGICAL SURVEY, DENVER, COLORADO 80226, OR RESTON, VIRGINIA 22092
A FOLDER DESCRIBING TOPOGRAPHIC MAPS AND SYMBOLS IS AVAILABLE ON REQUEST

ROAD CLASSIFICATION
Primary highway, all weather, hard surface
Secondary highway, all weather, improved surface
Unimproved road, fair or dry weather
State Route



ELMIRA, N.Y.-PA.
SE/4 ELMIRA 15' QUADRANGLE
42076-A7-TF-024

1969
DMA 5668 III SE-SERIES V821

To place on the predicted North American datum 1983
move the projection lines 4 meters south and
26 meters west as shown by dashed corner ticks

