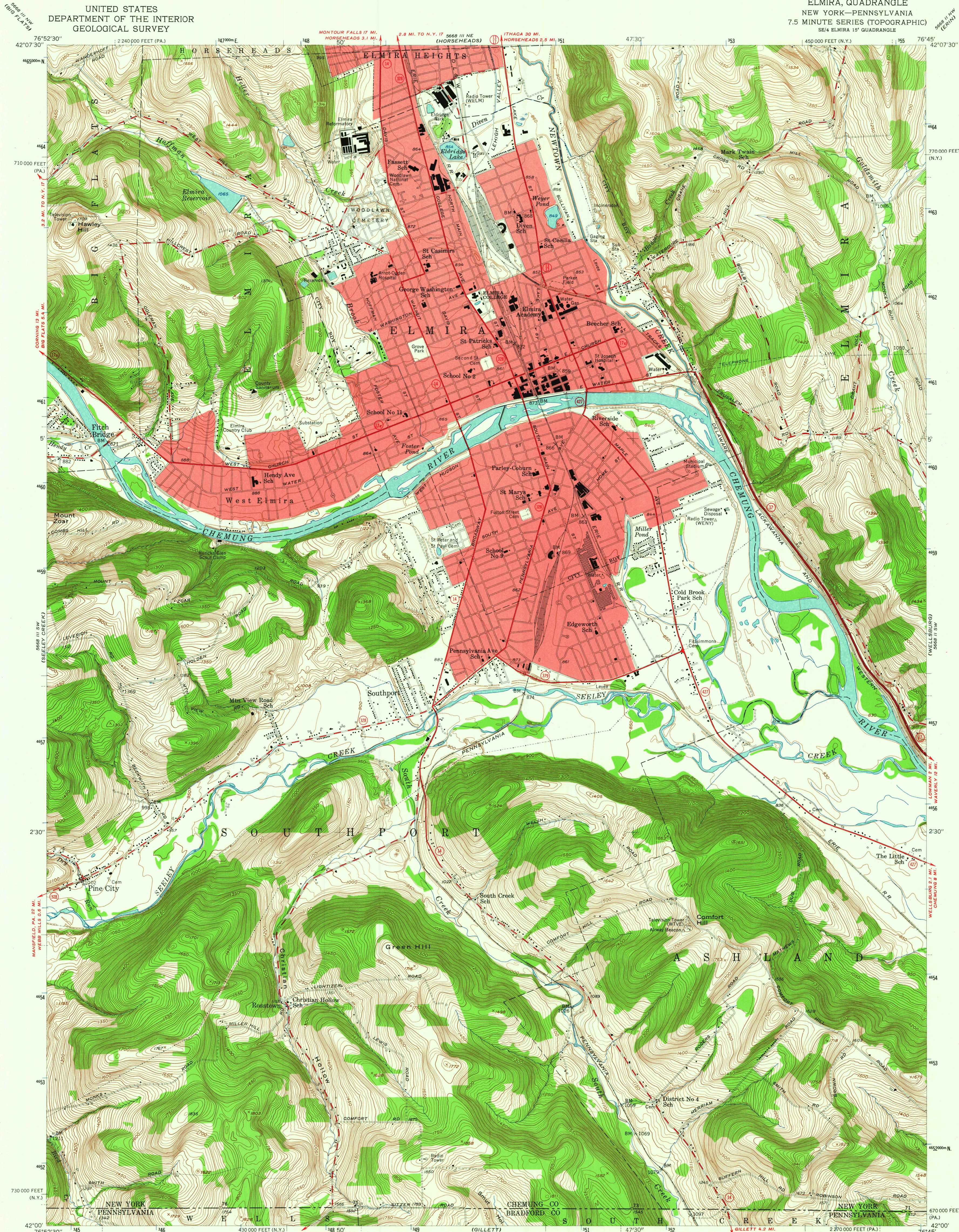
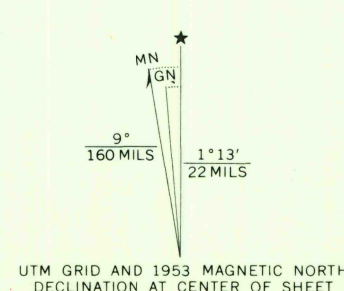


UNITED STATES  
DEPARTMENT OF THE INTERIOR  
GEOLOGICAL SURVEY

ELMIRA, QUADRANGLE  
NEW YORK-PENNSYLVANIA  
7.5 MINUTE SERIES (TOPOGRAPHIC)  
SE/4 ELMIRA 15' QUADRANGLE



Mapped, edited, and published by the Geological Survey  
Control by USGS and USC&GS  
Topography from aerial photographs by multiplex methods  
Aerial photographs taken 1948. Field check 1953  
Polyconic projection. 1927 North American datum  
10,000-foot grids based on New York coordinate system,  
central zone and Pennsylvania coordinate system, north zone  
Red tint indicates areas in which only  
landmark buildings are shown  
Unchecked elevations are shown in brown  
1000-meter Universal Transverse Mercator grid ticks,  
zone 18, shown in blue



CONTOUR INTERVAL 10 FEET  
DATUM IS MEAN SEA LEVEL

THIS MAP COMPLIES WITH NATIONAL MAP ACCURACY STANDARDS  
FOR SALE BY U. S. GEOLOGICAL SURVEY, WASHINGTON, D. C. 20242  
A FOLDER DESCRIBING TOPOGRAPHIC MAPS AND SYMBOLS IS AVAILABLE ON REQUEST

USGS  
Historical File  
Topographic Division



ROAD CLASSIFICATION  
Heavy-duty ——— Light-duty ———  
Medium-duty ——— Unimproved dirt ———  
U. S. Route ——— State Route ———

U.S.G.S.  
FILE COPY  
TOPOGRAPHIC DIVISION

ELMIRA, N. Y.—PA.  
SE/4 ELMIRA 15' QUADRANGLE  
N 4200—W 7645/7.5  
1953  
AMS 5668 III SE-SERIES V821

JUN 2 1965  
4235