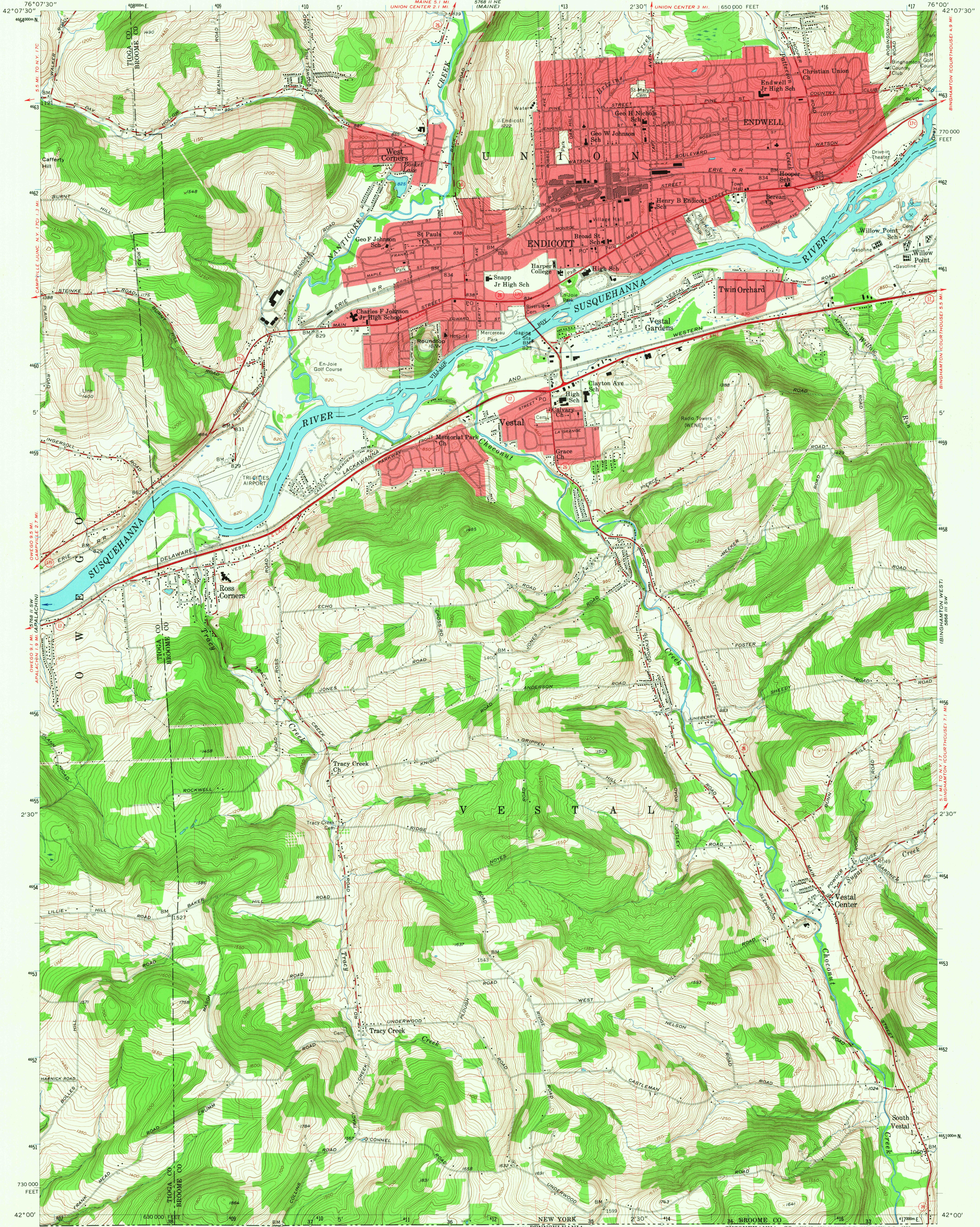
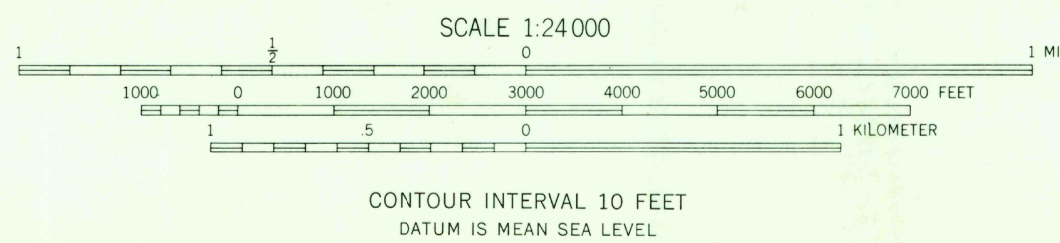


UNITED STATES
DEPARTMENT OF THE INTERIOR
GEOLOGICAL SURVEY

ENDICOTT QUADRANGLE
NEW YORK
7.5 MINUTE SERIES (TOPOGRAPHIC)
SE 1/4 APALACHIN 15' QUADRANGLE



Mapped, edited, and published by the Geological Survey
Control by USGS, USC&GS, and USCE
Topography from aerial photographs by photogrammetric methods
Aerial photographs taken 1942, 1944, and 1948. Field check 1956
Polyconic projection. 1927 North American datum
10,000-foot grid based on New York coordinate system,
central zone
1000-meter Universal Transverse Mercator grid ticks,
zone 18, shown in blue
Fine red dashed lines indicate selected fence and field lines
visible on aerial photographs. This information is unchecked
Red tint indicates areas in which only
landmark buildings are shown
Unchecked elevations are shown in brown



THIS MAP COMPLIES WITH NATIONAL MAP ACCURACY STANDARDS
FOR SALE BY U.S. GEOLOGICAL SURVEY, WASHINGTON, D. C. 20242
A FOLDER DESCRIBING TOPOGRAPHIC MAPS AND SYMBOLS IS AVAILABLE ON REQUEST

USGS
Historical File
Topographic Division

U.S.G.S.
FILE COPY
TOPOGRAPHIC DIVISION

Heavy-duty ——— Light-duty ———
Medium-duty ——— Unimproved dirt ———
State Route

ENDICOTT, N. Y.
SE 1/4 APALACHIN 15' QUADRANGLE
N4200—W7600/7.5

1956
AMS 5768 II SE—SERIES V821

4560
NOV