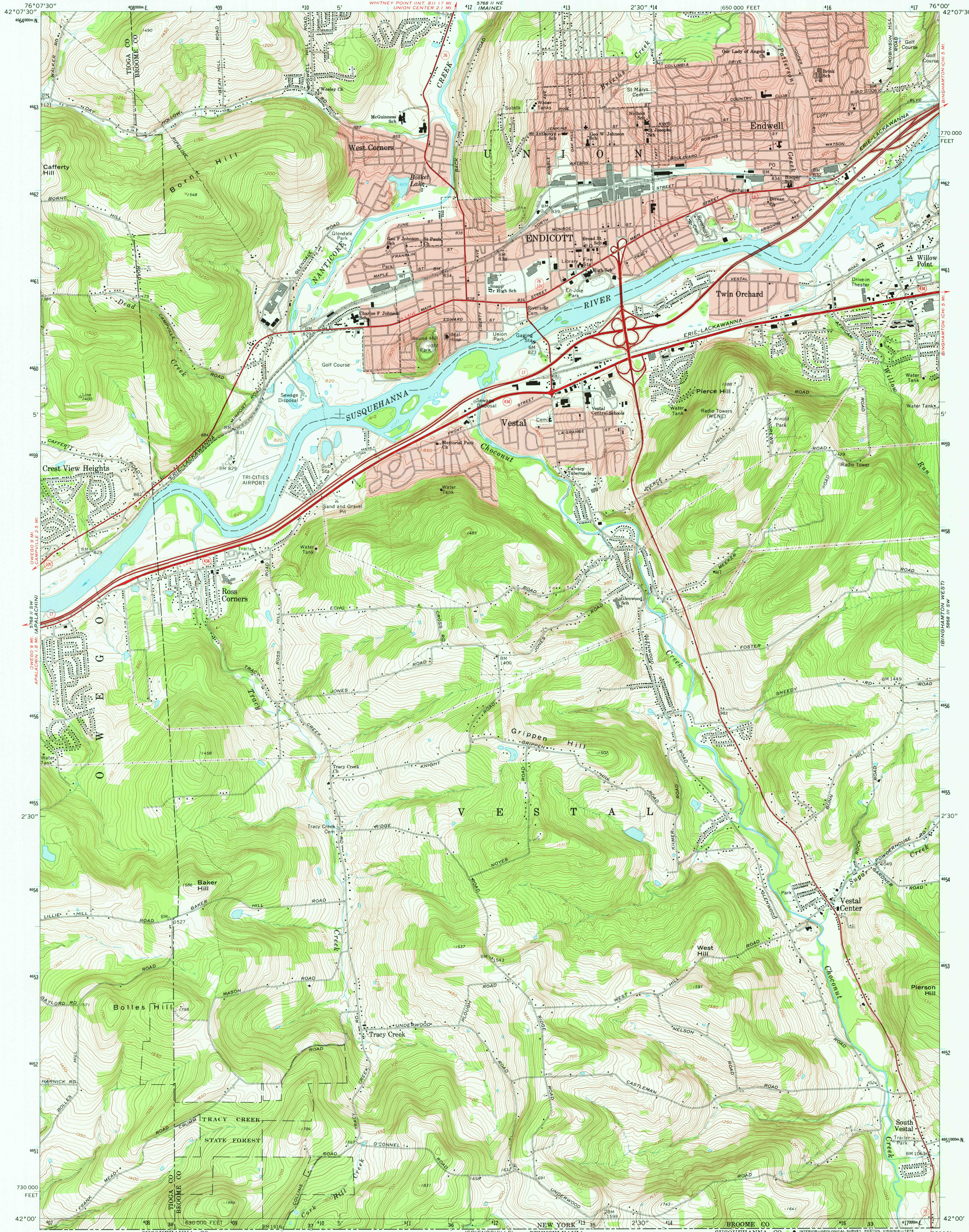
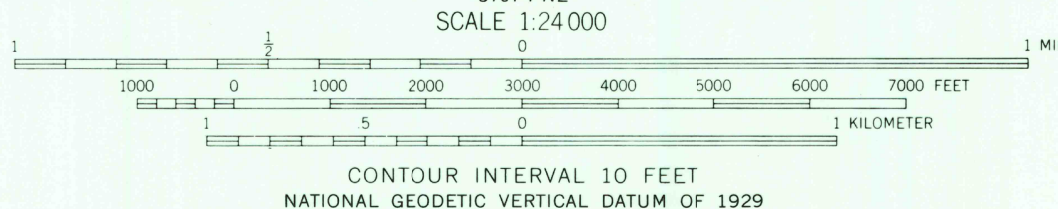


UNITED STATES
DEPARTMENT OF THE INTERIOR
GEOLOGICAL SURVEY

ENDICOTT QUADRANGLE
NEW YORK
7.5 MINUTE SERIES (TOPOGRAPHIC)
SE/4 ENDICOTT 15' QUADRANGLE



Maped, edited, and published by the Geological Survey
Revised in cooperation with New York Department of Transportation
Control by USGS, USCGS, and USCE
Topography by photogrammetric methods from aerial photographs
taken 1942, 1944, and 1948. Field checked 1956. Revised from aerial
photographs taken 1968. Field checked 1969
Polyconic projection. 1927 North American datum
10,000-foot grid based on New York coordinate system,
central zone
1000-meter Universal Transverse Mercator grid ticks,
zone 18, shown in blue
Fine red dashed lines indicate selected fence and field lines where
generally visible on aerial photographs. This information is unchecked
Red tint indicates areas in which only landmark buildings are shown



ROAD CLASSIFICATION
Primary highway, hard surface ————
Secondary highway, hard surface ————
Unimproved road ————
Interstate Route ————
U. S. Route ————
State Route ————



MAR 24 1978

ENDICOTT, N. Y.
SE/4 ENDICOTT 15' QUADRANGLE
N4200—W7600/7.5
1969
PHOTOINSPECTED 1976
AMS 5768 II SE—SERIES V821

THIS MAP COMPLIES WITH NATIONAL MAP ACCURACY STANDARDS
FOR SALE BY U. S. GEOLOGICAL SURVEY, RESTON, VIRGINIA 22092
A FOLDER DESCRIBING TOPOGRAPHIC MAPS AND SYMBOLS IS AVAILABLE ON REQUEST