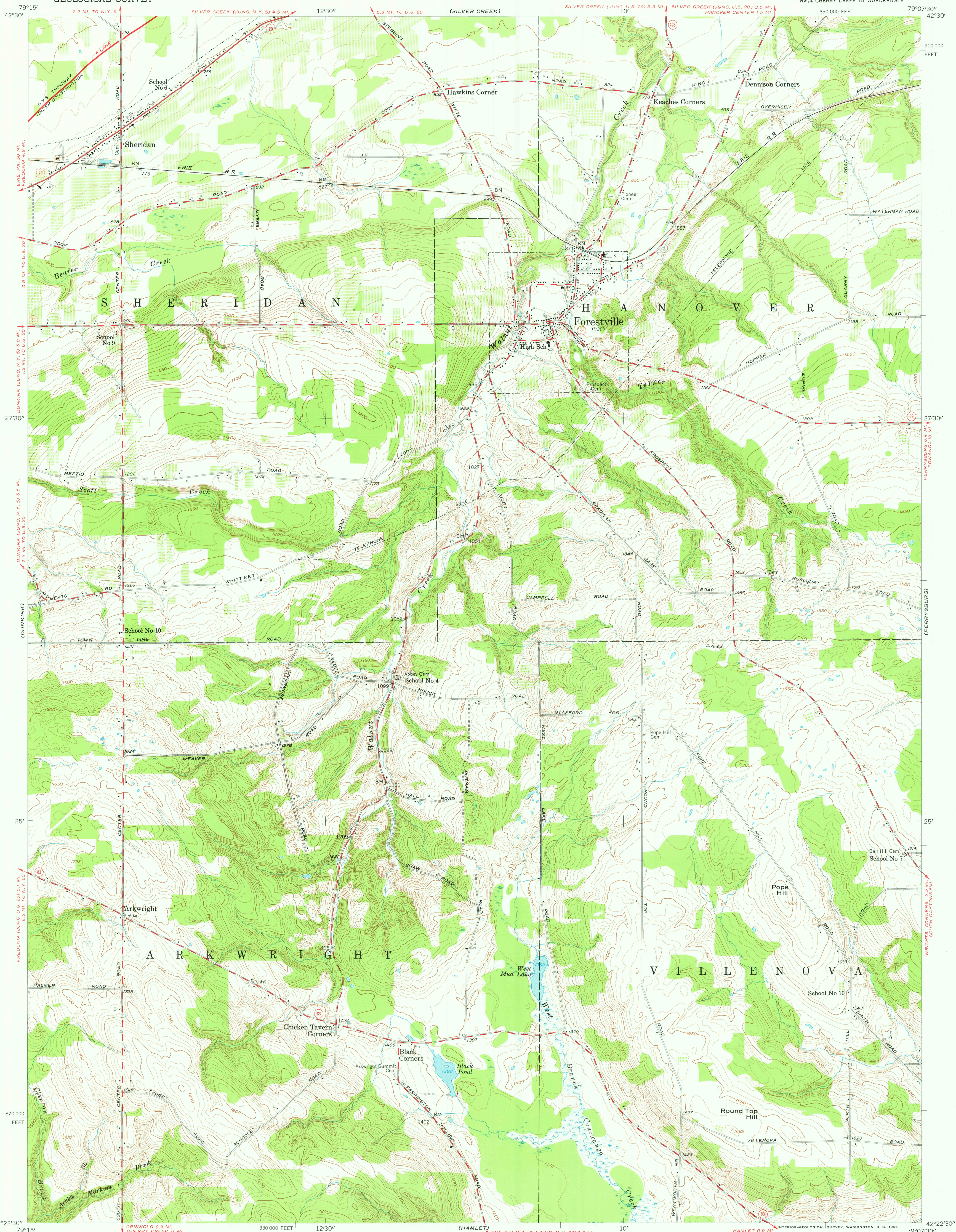


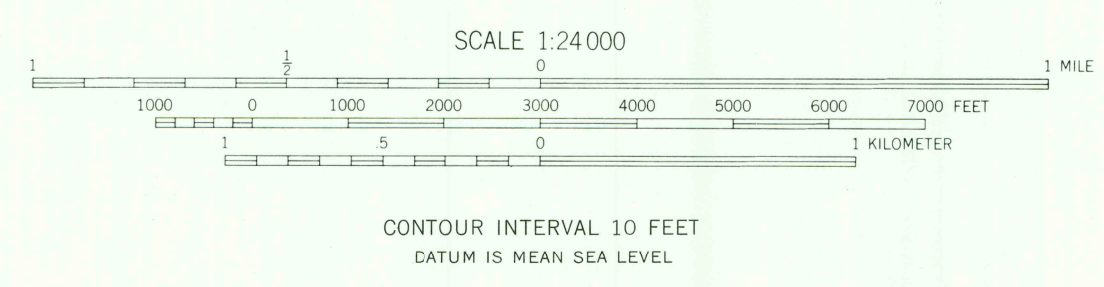
UNITED STATES  
DEPARTMENT OF THE INTERIOR  
GEOLOGICAL SURVEY

FORESTVILLE QUADRANGLE  
NEW YORK—CHAUTAUQUA CO.  
7.5 MINUTE SERIES (TOPOGRAPHIC)  
NW 1/4 CHERRY CREEK 15' QUADRANGLE



Mapped, edited, and published by the Geological Survey  
Control by USGS and USC&GS  
Topography from aerial photographs by photogrammetric methods.  
Aerial photographs taken 1953. Field check 1954  
Polyconic projection. 1927 North American datum  
10,000-foot grid based on New York coordinate system,  
west zone  
Unlabelled wells are gas wells  
Unchecked elevations are shown in brown

TRUE NORTH  
MAGNETIC NORTH  
APPROXIMATE MEAN  
DECLINATION, 1954



ROAD CLASSIFICATION  
Heavy-duty ——— Light-duty ———  
Medium-duty ——— Unimproved dirt ———  
U.S. Route ——— State Route ———

FORESTVILLE, N. Y.  
NW 1/4 CHERRY CREEK 15' QUADRANGLE  
N 4222.5 — W 7907.5/7.5

USGS  
Historical File  
Topographic Division

1954

1200  
OCT 11 1977