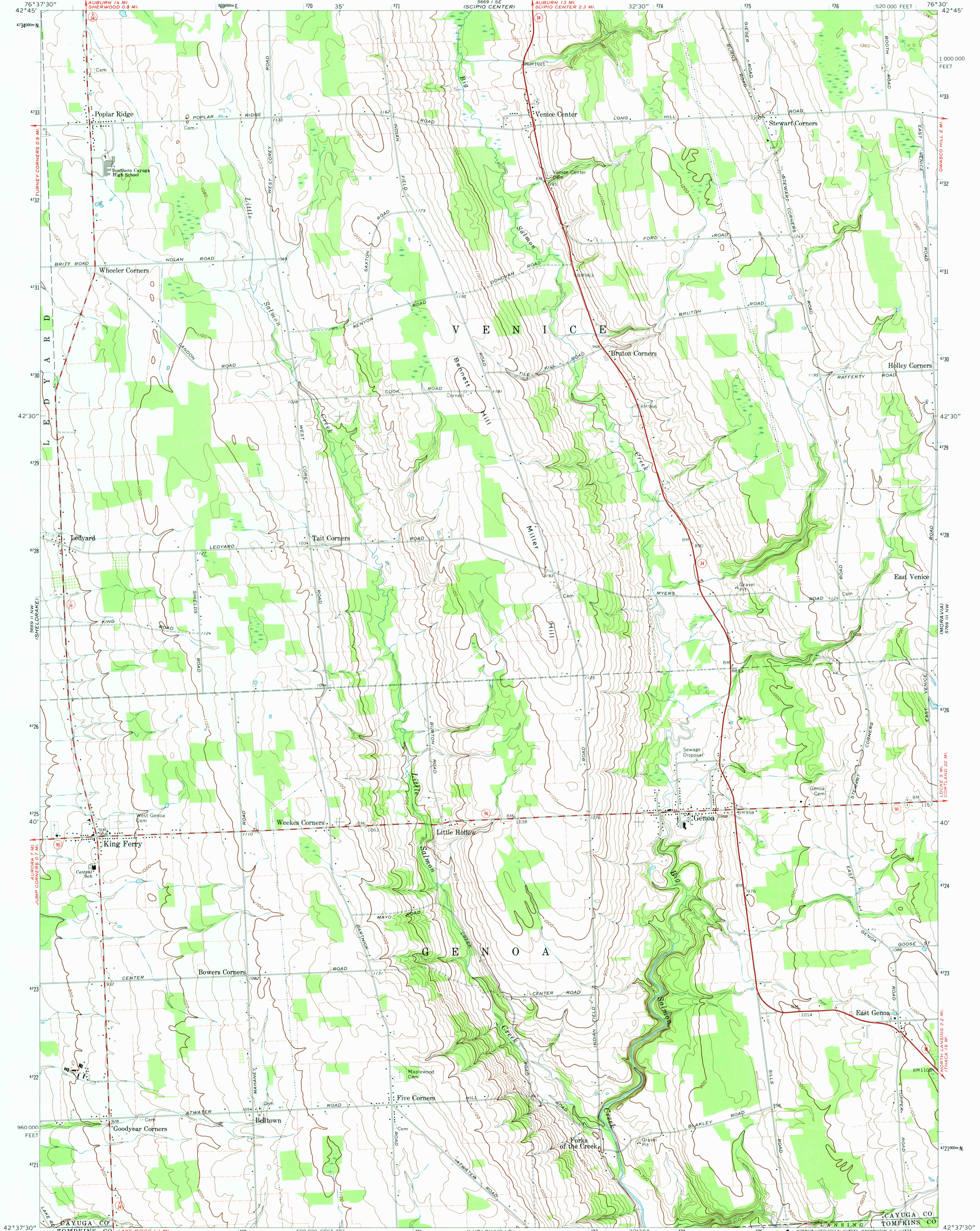
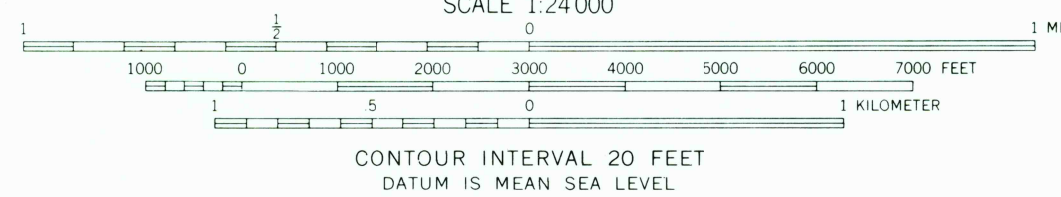


UNITED STATES  
DEPARTMENT OF THE INTERIOR  
GEOLOGICAL SURVEY

GENOA QUADRANGLE  
NEW YORK  
7.5 MINUTE SERIES (TOPOGRAPHIC)



Mapped by the Army Map Service  
Edited and published by the Geological Survey  
Control by USC&GS and Tennessee Valley Authority  
Topography by photogrammetric methods from aerial photographs  
taken 1942. Field checked 1942. Revised by the Geological Survey  
from aerial photographs taken 1969. Field checked 1970.  
Polyconic projection. 1927 North American datum.  
10,000-foot grid based on New York coordinate system, central zone  
1000-meter Universal Transverse Mercator grid ticks,  
zone 18, shown in blue.  
Fine red dashed lines indicate selected fence and field lines where  
generally visible on aerial photographs. This information is unchecked.



ROAD CLASSIFICATION  
Primary highway, hard surface  
Secondary highway, hard surface  
Light-duty road, hard or improved surface  
Unimproved road  
Interstate Route  
U. S. Route  
State Route



GENOA, N. Y.  
N4237.5-W7630/7.5  
1970

APR 12 1974

AMS 5669 II NE-SERIES V821