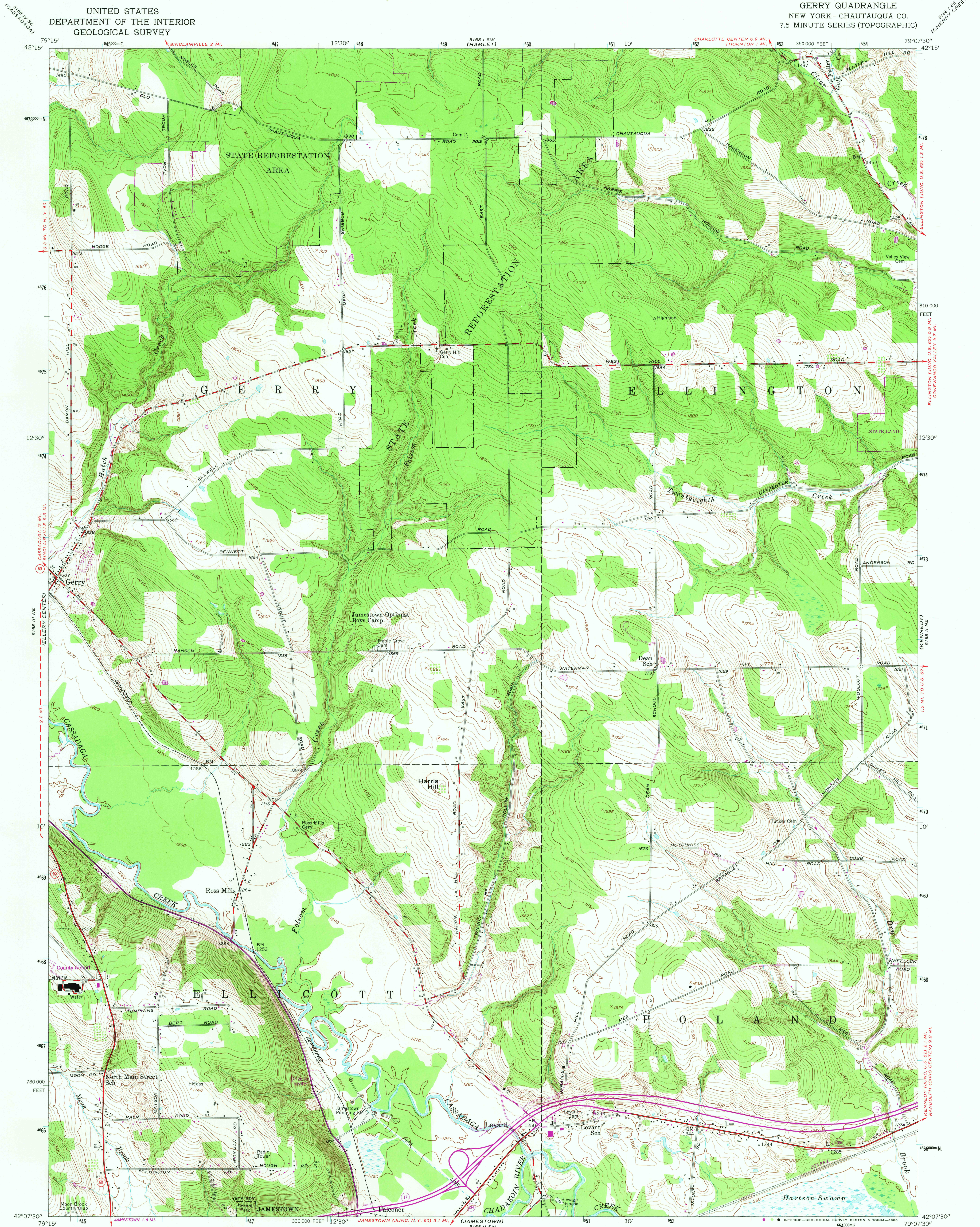


UNITED STATES  
DEPARTMENT OF THE INTERIOR  
GEOLOGICAL SURVEY

GERRY QUADRANGLE  
NEW YORK—CHAUTAUQUA CO.  
7.5 MINUTE SERIES (TOPOGRAPHIC)



Mapped, edited, and published by the Geological Survey  
Control by USGS and USC&GS  
Topography from aerial photographs by photogrammetric  
methods. Aerial photographs taken 1953. Field check 1954  
Polyconic projection. 1927 North American datum  
10,000-foot grid based on New York coordinate system,  
west zone  
Unchecked elevations are shown in brown  
1000-meter Universal Transverse Mercator grid ticks,  
zone 17, shown in blue  
There may be private inholdings within the boundaries of  
the National or State reservations shown on this map  
Revisions shown in purple and woodland compiled from  
aerial photographs taken 1976 and other source data  
This information not field checked. Map edited 1979

UTM GRID AND 1979 MAGNETIC NORTH  
DECLINATION AT CENTER OF SHEET

SCALE 1:24,000  
1 1000 2000 3000 4000 5000 6000 7000 FEET  
1 5 10 15 20 25 30 KILOMETER  
CONTOUR INTERVAL 10 FEET  
NATIONAL GEODETIC VERTICAL DATUM OF 1929



ROAD CLASSIFICATION  
Heavy-duty \_\_\_\_\_ Light-duty \_\_\_\_\_  
Medium-duty \_\_\_\_\_ Unimproved dirt \_\_\_\_\_  
U.S. Route \_\_\_\_\_ State Route \_\_\_\_\_

USCS Historical File  
Topographic Division  
GERRY, N. Y.  
N4207.5-W7907.5,7.5  
1954  
PHOTOREVISED 1979  
AMS 5168 II NW—SERIES V821

JUL 16 1980

THIS MAP COMPLIES WITH NATIONAL MAP ACCURACY STANDARDS  
FOR SALE BY U.S. GEOLOGICAL SURVEY, RESTON VIRGINIA 22092  
A FOLDER DESCRIBING TOPOGRAPHIC MAPS AND SYMBOLS IS AVAILABLE ON REQUEST