

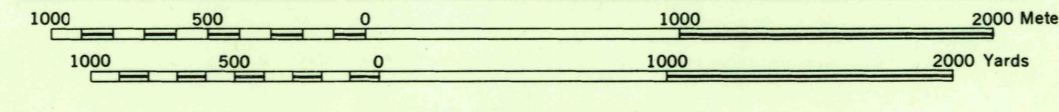
U.S.G.S. FILE COPY
Topographic and Military

U.S.G.S. FILE COPY
Topographic and Military

A.M.S. V821
First Edition (AMS 1), 1945

GRAND GORGE, N. Y. HY. NO. 23 1.8 MI.
MARGARETVILLE, N. Y. HY. NO. 28 2.0 MI.

SCALE 1:24,000



Prepared under the direction of the Chief of Engineers by the Army Map Service (TV), U.S. Army, Washington, D.C. Compiled in 1945 by USGS and TVA from wide angle aerial photographs by stereophotogrammetric methods. Aerial photography for TVA, 1941 and 1943. Horizontal and vertical control by USGS and TVA. Map field checked, 1945. This map complies with the national standard map accuracy requirements.

CONTOUR INTERVAL 20 FEET
DATUM IS MEAN SEA LEVEL

POLYCONIC PROJECTION
1927 NORTH AMERICAN DATUM

ONE THOUSAND YARD U. S. POLYCONIC GRID, ZONE A
THE LAST THREE DIGITS OF THE GRID NUMBERS ARE OMITTED

USGS
Historical File
Topographic Division

LEGEND

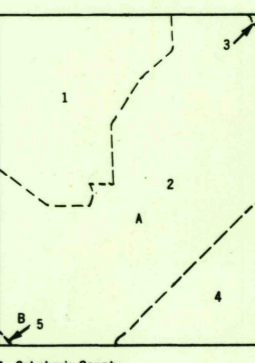
ROAD DATA 1945

Hard surface, heavy duty road, more than two lanes wide	Loose surface, graded, dry-weather road
Hard surface, heavy duty road, two lanes wide; Federal route marker	Trail; Dirt road
Secondary, hard surface, all-weather road, two lanes wide; State route marker	Railroad in street; Carline in street
	UNDER CONSTRUCTION
RAILROADS	UNDER CONSTRUCTION
Standard gauge	Single track
Narrow gauge	Double track
Single track carline	ABANDONED
	Single track
	Double track
BOUNDARIES	Double track carline
International	Mine
State	Triangulation station
County (with monument)	Bench mark
Town	Spot elevation
Reservation	Woods
Military reservation	Woods-brushwood
School; Church	Swamp, marsh
Cemetery	Rocks wash at low tide
Churchyard	Orchard
	Vineyard
	Man-made shoreline

REPRINTED FROM MILITARY EDITION FOR CIVIL USE
PENDING REVISION FOR STANDARD ISSUE
SOLD AND DISTRIBUTED BY U. S. GEOLOGICAL SURVEY, WASHINGTON 25, D. C.

APPROXIMATE MEAN DECLINATION 1946
FOR CENTER OF SHEET
NO ANNUAL MAGNETIC CHANGE
Use diagram only to obtain numerical values. To determine magnetic north line, connect the point "M" on the north edge of the map with the value of the angle between GRID NORTH and MAGNETIC NORTH, as plotted on the degree scale of the north edge of the map.

INDEX TO BOUNDARIES



INDEX TO ADJOINING SHEETS

Sheet 6168 IV NE	Sheet 6168 IV SE	Sheet 6168 IV SW
Sheet 6168 III NE	Sheet 6168 III SE	Sheet 6168 III SW
Sheet 6168 II NE	Sheet 6168 II SE	Sheet 6168 II SW

- A. Schoharie County
- 1. Benheim Town
- 2. Gilboa Town
- 3. Broome Town
- 4. Conesville Town
- 5. Delaware County
- 6. Roxbury Town

U.S.G.S. FILE COPY
Topographic and Military

GILBOA, NEW YORK
N4222.5-W7422.5/7.5

DEC 14 1948

2075