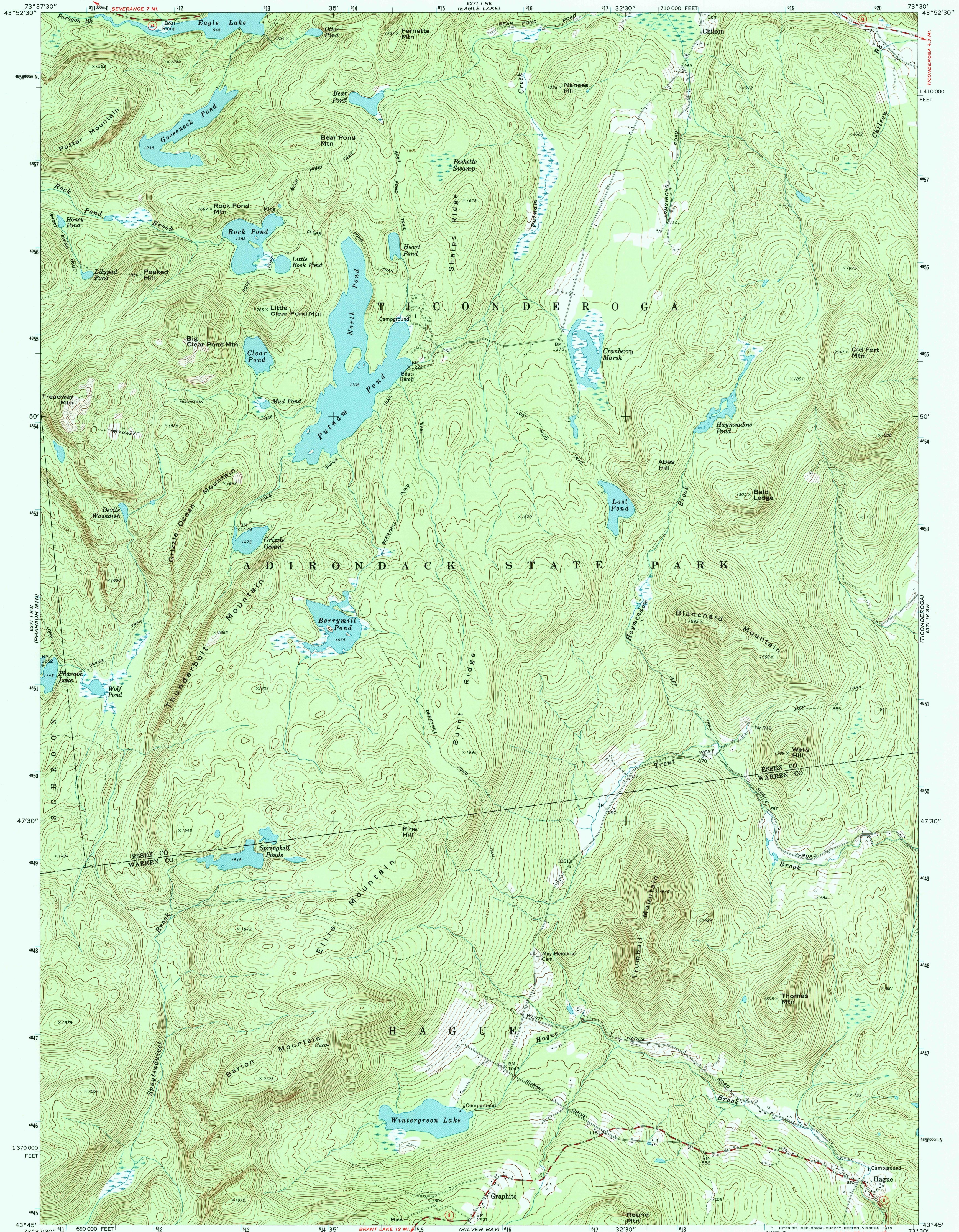
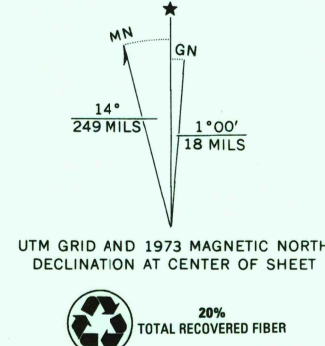


UNITED STATES  
DEPARTMENT OF THE INTERIOR  
GEOLOGICAL SURVEY

GRAPHITE QUADRANGLE  
NEW YORK  
7.5 MINUTE SERIES (TOPOGRAPHIC)  
SE/4 PARADOX LAKE 15' QUADRANGLE



Mapped, edited, and published by the Geological Survey  
Control by USGS and NOS/NOAA  
Topography by photogrammetric methods from aerial photographs  
taken 1970 and 1971. Field checked 1973  
Projection and 10,000-foot grid ticks: New York coordinate  
system, east zone (transverse Mercator)  
1000-metre Universal Transverse Mercator grid ticks, zone 18,  
shown in blue. 1927 North American datum



THIS MAP COMPLIES WITH NATIONAL MAP ACCURACY STANDARDS  
FOR SALE BY U. S. GEOLOGICAL SURVEY, RESTON, VIRGINIA 22092  
A FOLDER DESCRIBING TOPOGRAPHIC MAPS AND SYMBOLS IS AVAILABLE ON REQUEST



ROAD CLASSIFICATION  
Primary highway, hard surface  
Secondary highway, hard surface  
Unimproved road  
Interstate Route  
U. S. Route  
State Route

GRAPHITE, N. Y.  
SE/4 PARADOX LAKE 15' QUADRANGLE  
N4345-W7330/7.5

1973  
AMS 6271 I SE-SERIES V821

RECEIVED  
NOV 3 0 2000

