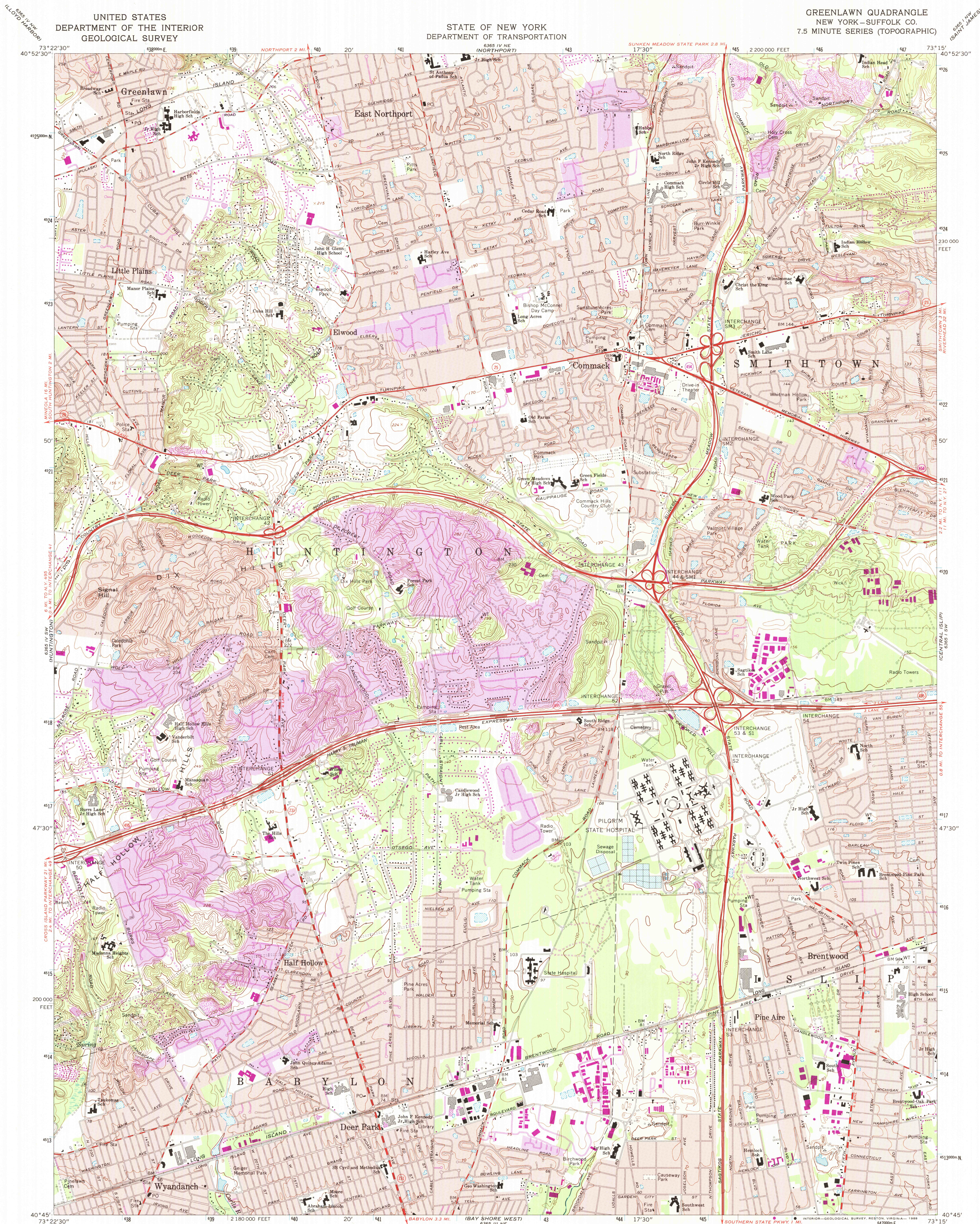


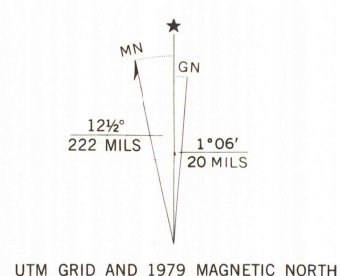
UNITED STATES
DEPARTMENT OF THE INTERIOR
GEOLOGICAL SURVEY

STATE OF NEW YORK
DEPARTMENT OF TRANSPORTATION

GREENLAWN QUADRANGLE
NEW YORK—SUFFOLK CO.
7.5 MINUTE SERIES (TOPOGRAPHIC)



Mapped, edited, and published by the Geological Survey
Control by USGS, USC&GS, and USCE
Topography by photogrammetric methods from aerial
photographs taken 1966. Field checked 1967
Supersedes Army Map Service map dated 1954
Polyconic projection. 1927 North American datum
10,000-foot grid based on New York coordinate system,
Long Island zone
1000-meter Universal Transverse Mercator grid ticks, zone 18,
shown in blue
Red tint indicates areas in which only landmark buildings are shown
Purple tint indicates extension of urban areas
Revisions shown in purple compiled from aerial photographs
taken 1977 and other source data. This information not
field checked. Map edited 1979



SCALE 1:24,000
CONTOUR INTERVAL 10 FEET
NATIONAL GEODETIC VERTICAL DATUM OF 1929
THIS MAP COMPLIES WITH NATIONAL MAP ACCURACY STANDARDS
FOR SALE BY U. S. GEOLOGICAL SURVEY
DENVER, COLORADO 80225, OR RESTON, VIRGINIA 22092
A FOLDER DESCRIBING TOPOGRAPHIC MAPS AND SYMBOLS IS AVAILABLE ON REQUEST



ROAD CLASSIFICATION
Heavy-duty ——— Light-duty ———
Medium-duty ——— Unimproved dirt ———
○ State Route

GREENLAWN, N. Y.
40073-G3-TF-024

1967
PHOTOGRAPHED 1979
DMA 6365 IV SE—SERIES 1981

