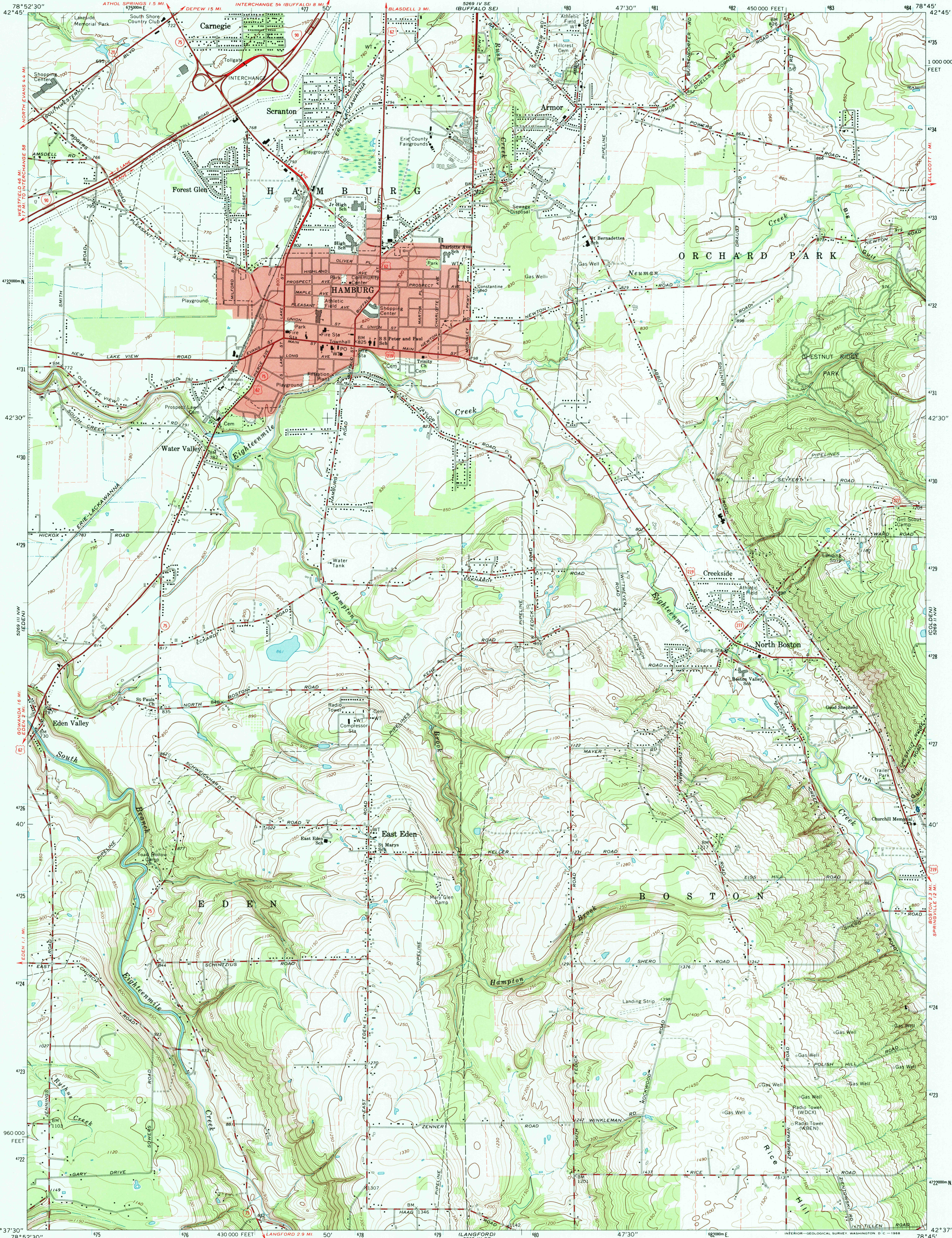
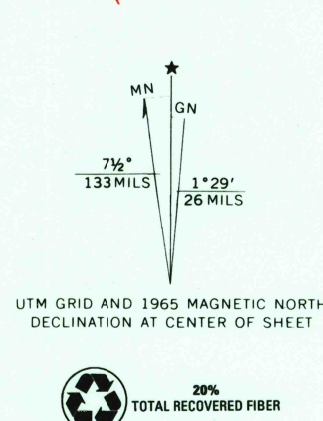


UNITED STATES
DEPARTMENT OF THE INTERIOR
GEOLOGICAL SURVEY

HAMBURG QUADRANGLE
NEW YORK-ERIE CO.
7.5 MINUTE SERIES (TOPOGRAPHIC)
NE 1/4 EDEN 15' QUADRANGLE



Maped, edited, and published by the Geological Survey
in cooperation with New York Department of Public Works
Control by USGS, USC&GS, and USCE
Planimetry compiled by U.S. Corps of Engineers from
aerial photographs taken 1942. Topography by
planimetry surveys 1947. Revised 1965
Polyconic projection. 1927 North American datum
10,000-foot grid based on New York coordinate system, west zone
1000-meter Universal Transverse Mercator grid ticks,
zone 17, shown in blue
Fine red dashed lines indicate selected fence and field lines where
generally visible on aerial photographs. This information is unchecked
Red tint indicates area in which only landmark buildings are shown



CONTOUR INTERVAL 10 FEET
DATUM IS MEAN SEA LEVEL
THIS MAP COMPLIES WITH NATIONAL MAP ACCURACY STANDARDS
FOR SALE BY U.S. GEOLOGICAL SURVEY, WASHINGTON, D.C. 20242
A FOLDER DESCRIBING TOPOGRAPHIC MAPS AND SYMBOLS IS AVAILABLE ON REQUEST



ROAD CLASSIFICATION
Heavy-duty ——— Light-duty ———
Medium-duty ——— Unimproved dirt ———
Interstate Route ——— U.S. Route ——— State Route ———
HAMBURG, N. Y.
NE 1/4 EDEN 15' QUADRANGLE
N4237.5-W7845.7.5
1965
AMS 5269 III NE-SERIES V821

RECEIVED
AUG 31 2000
USGS NAD
HISTORICAL MAP ARCHIVES
ISBN 0-607-41494-1
9 780607 414394