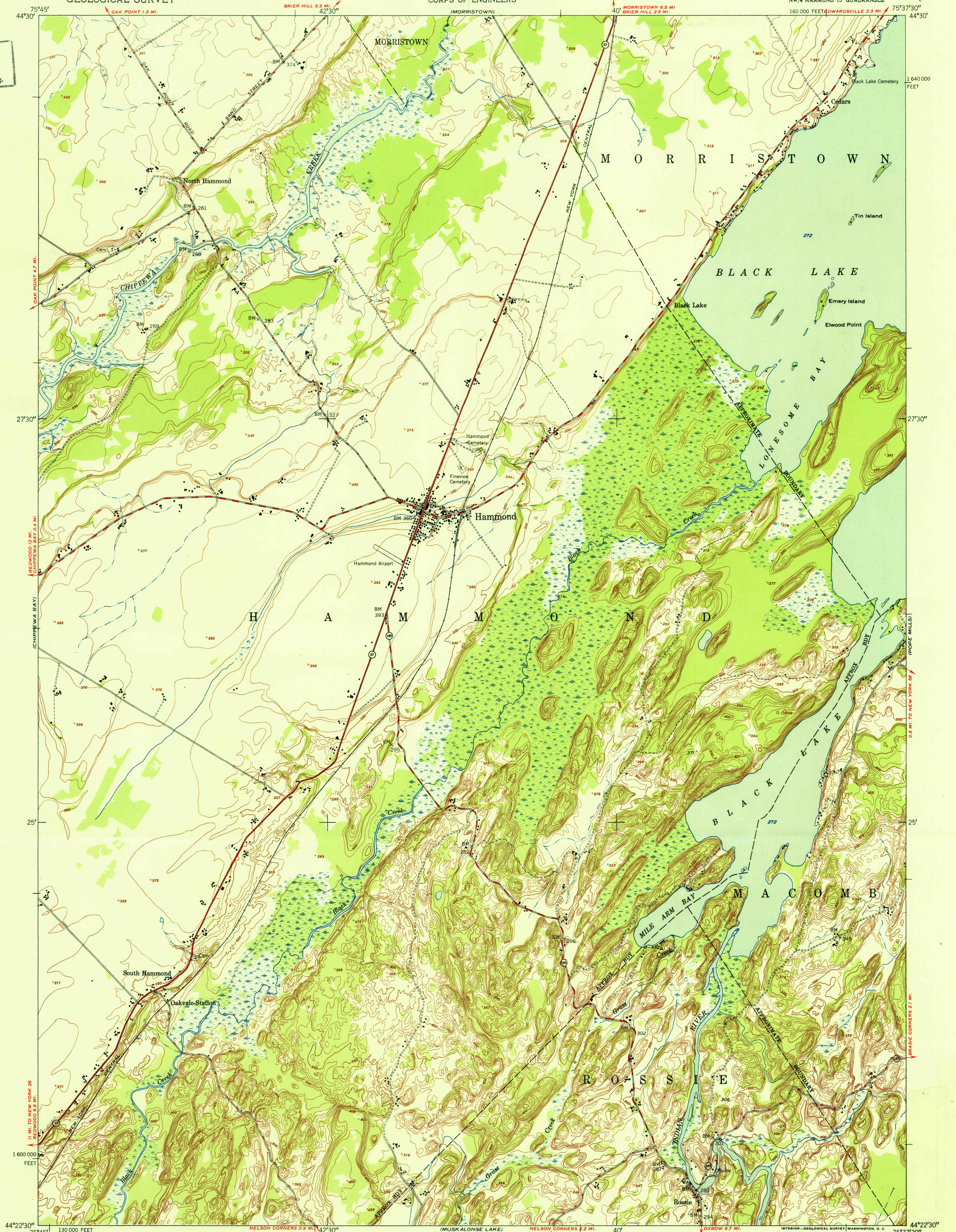
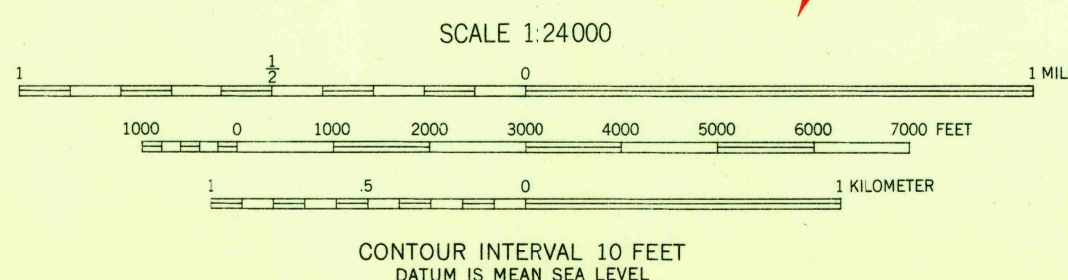


U.S.G.S.
FILE COPY
Inspection and Editing.



Mapped by the Army Map Service
Published for civil use by the Geological Survey
Control by USC&GS, USGS, TVA, and USCE
Topography from aerial photographs by multiplex methods
Aerial photographs taken 1947. Field check 1949
Polyconic projection. 1927 North American datum
10,000-foot grid based on New York coordinate system,
east zone
No distinction is made between dwellings, barns,
commercial and industrial buildings
Unchecked elevations are shown in brown

TRUE NORTH
MAGNETIC NORTH
APPROXIMATE MEAN
DECLINATION, 1949



USGS
Historical File
Topographic Division

ROAD CLASSIFICATION
Heavy-duty... 4 LANE 16 LANE Light-duty...
Medium-duty... 4 LANE 16 LANE Unimproved dirt...
U.S. Route State Route

U.S.G.S.
FILE COPY
Inspection and Editing.

HAMMOND, N. Y.
NW/4 HAMMOND 15' QUADRANGLE
N4422.5-W7537.5/7.5
EDITION OF 1951

THIS MAP COMPLIES WITH NATIONAL MAP ACCURACY STANDARDS
FOR SALE BY U. S. GEOLOGICAL SURVEY, WASHINGTON 25, D. C.
A FOLDER DESCRIBING TOPOGRAPHIC MAPS AND SYMBOLS IS AVAILABLE ON REQUEST