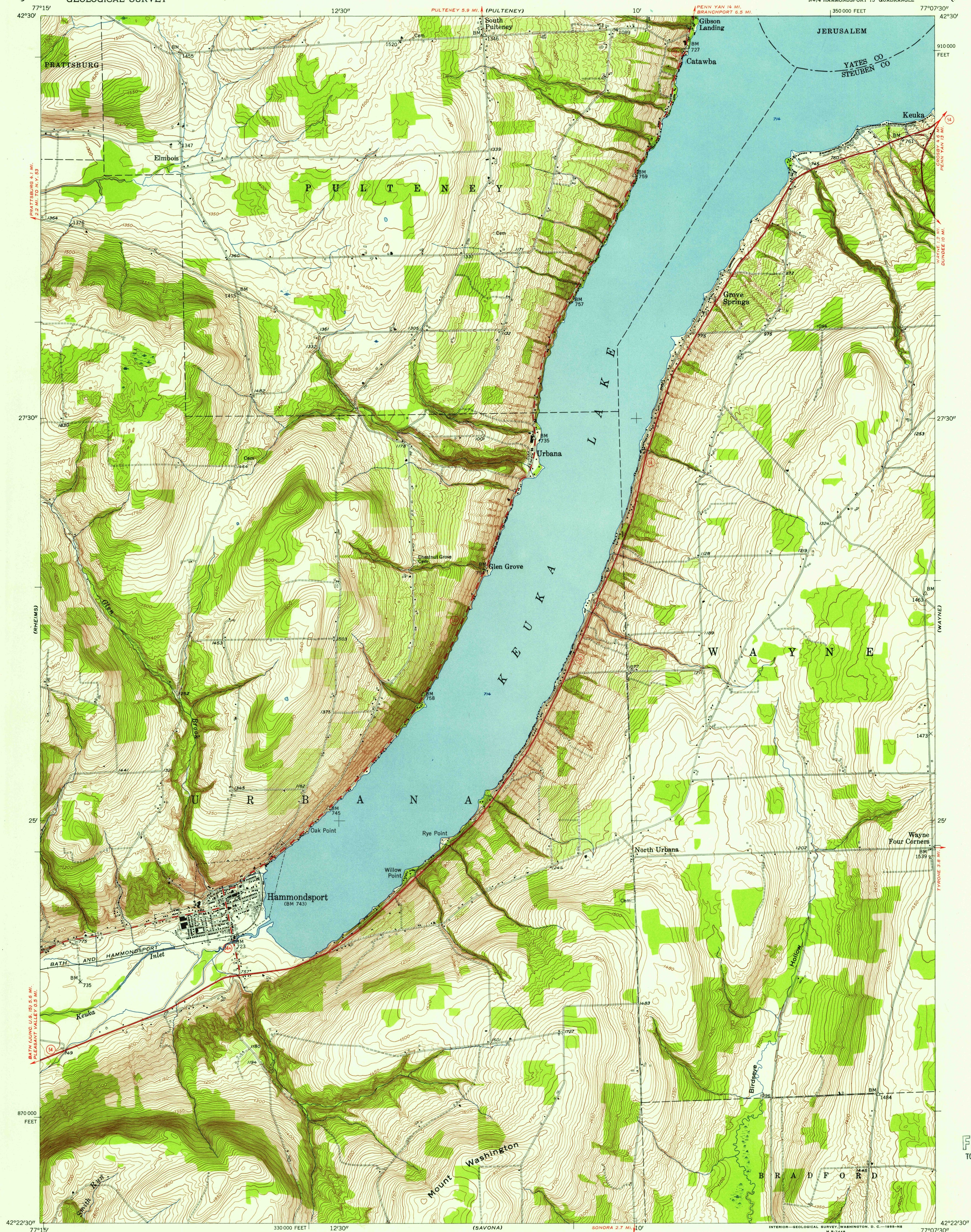


UNITED STATES
DEPARTMENT OF THE INTERIOR
GEOLOGICAL SURVEY

HAMMONDSPORT QUADRANGLE
NEW YORK
7.5 MINUTE SERIES (TOPOGRAPHIC)
NW/4 HAMMONDSPORT 15' QUADRANGLE



U.S.G.S.
FILE COPY
TOPOGRAPHIC DIVISION

U.S.G.S.
FILE COPY
TOPOGRAPHIC DIVISION

Mapped, edited, and published by the Geological Survey
Control by USGS and USC&GS
Topography from aerial photographs by multiplex methods
Aerial photographs taken 1944. Field check 1953
Polyconic projection. 1927 North American datum
10,000-foot grid based on New York coordinate system,
central zone

TRUE NORTH
MAGNETIC NORTH
APPROXIMATE MEAN
DECLINATION, 1953

SCALE 1:24,000
1 1000 0 1000 2000 3000 4000 5000 6000 7000 FEET
1 5 0 1 KILOMETER
CONTOUR INTERVAL 10 FEET
DATUM IS MEAN SEA LEVEL

USGS
Historical File
Topographic Division
NEW YORK
QUADRANGLE LOCATION

ROAD CLASSIFICATION
Heavy-duty... Light-duty...
Medium-duty... Unimproved dirt...
U.S. Route... State Route...

HAMMONDSPORT, N. Y.
NW/4 HAMMONDSPORT 15' QUADRANGLE
N4222.5-W7707.5/7.5

1953

JUL 26 1955

THIS MAP COMPLIES WITH NATIONAL MAP ACCURACY STANDARDS
FOR SALE BY U. S. GEOLOGICAL SURVEY, WASHINGTON 25, D. C.
A FOLDER DESCRIBING TOPOGRAPHIC MAPS AND SYMBOLS IS AVAILABLE ON REQUEST

3725