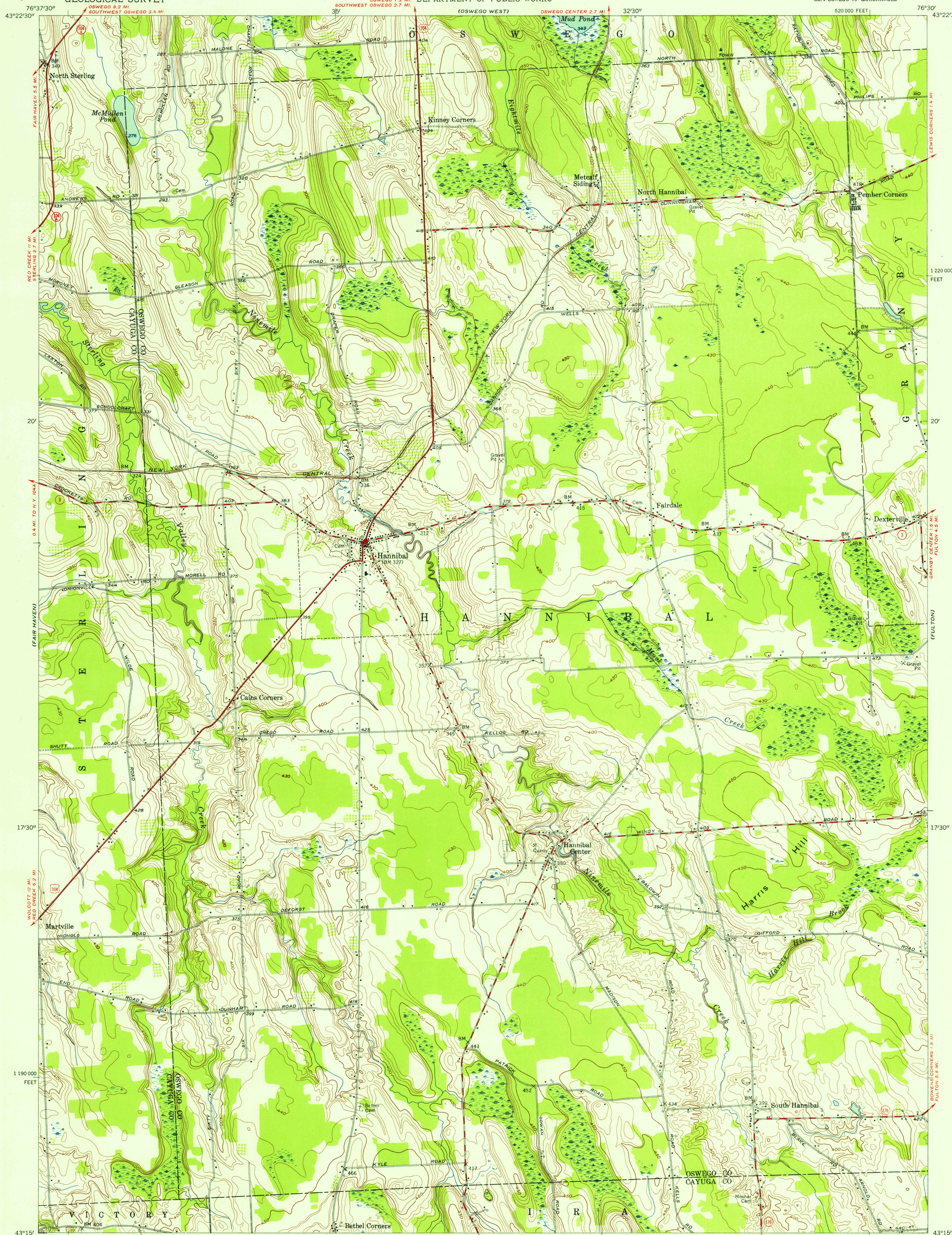


UNITED STATES
DEPARTMENT OF THE INTERIOR
GEOLOGICAL SURVEY

STATE OF NEW YORK
DEPARTMENT OF PUBLIC WORKS

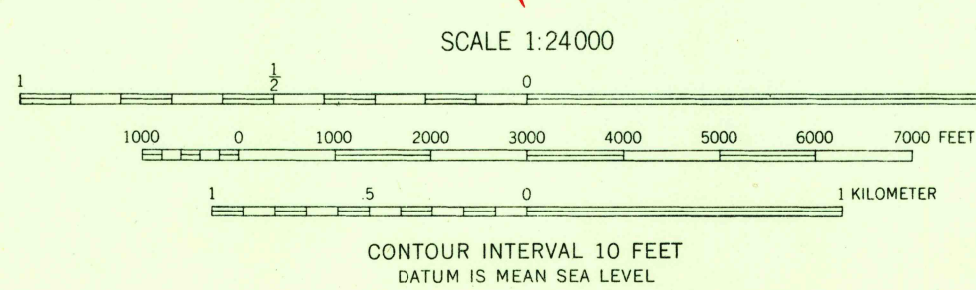
HANNIBAL QUADRANGLE
NEW YORK
7.5 MINUTE SERIES (TOPOGRAPHIC)
SE/4 OSWEGO 15' QUADRANGLE

U.S.G.S.
FILE COPY
TOPOGRAPHIC DIVISION



Mapped, edited, and published by the Geological Survey
Control by USGS, USC&GS, and TVA
Culture and drainage in part compiled by Corps of Engineers,
U. S. Army from aerial photographs taken 1942
Topography by plane-table surveys 1954
Polyconic projection. 1927 North American datum
10,000-foot grid based on New York coordinate system,
central zone

TRUE NORTH
MAGNETIC NORTH
APPROXIMATE MEAN
DECLINATION, 1954



USGS
Historical File
Topographic Division
NEW YORK
QUADRANGLE LOCATION

ROAD CLASSIFICATION
Heavy-duty ——— Light-duty ———
Medium-duty ——— Unimproved dirt ———
U. S. Route ——— State Route ———

HANNIBAL, N. Y.
SE/4 OSWEGO 15' QUADRANGLE
N4315—W7630/7.5

1954

U.S.G.S.
FILE COPY
TOPOGRAPHIC DIVISION

OCT 21 1955

THIS MAP COMPLIES WITH NATIONAL MAP ACCURACY STANDARDS
FOR SALE BY U. S. GEOLOGICAL SURVEY, WASHINGTON 25, D. C.
A FOLDER DESCRIBING TOPOGRAPHIC MAPS AND SYMBOLS IS AVAILABLE ON REQUEST