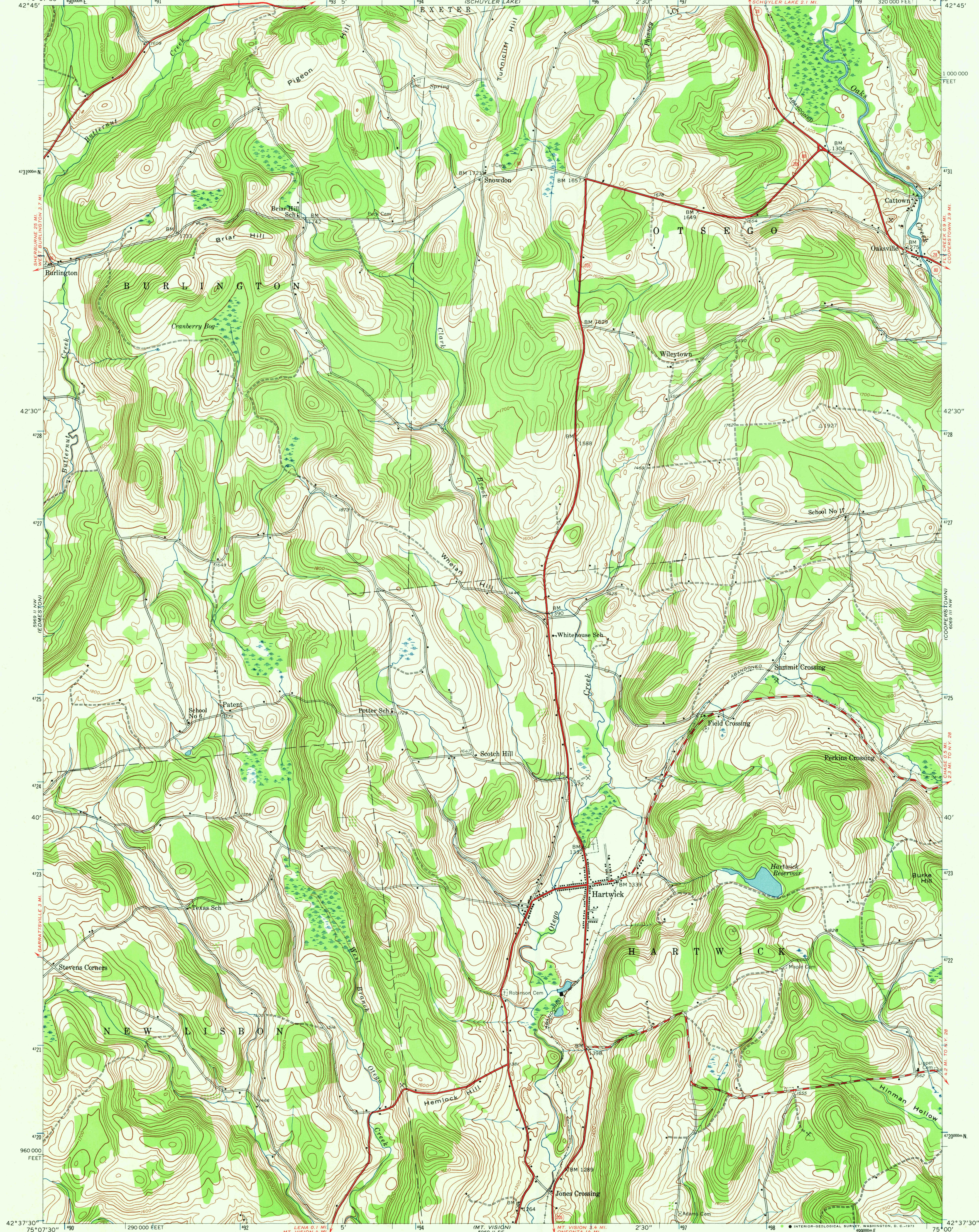


UNITED STATES
DEPARTMENT OF THE INTERIOR
GEOLOGICAL SURVEY

UNITED STATES
DEPARTMENT OF THE ARMY
CORPS OF ENGINEERS

HARTWICK QUADRANGLE
NEW YORK—OTSEGO CO.
7.5 MINUTE SERIES (TOPOGRAPHIC)
NE/4 HARTWICK 15' QUADRANGLE



Map by the Army Map Service
Published for civil use by the Geological Survey
Control by USGS, USC&GS, and TVA
Topography from aerial photographs by photogrammetric methods
Aerial photographs taken 1942. Field check 1943
Polyconic projection. 1927 North American datum
10,000-foot grid based on New York coordinate system, east zone
1000-meter Universal Transverse Mercator grid ticks,
zone 18, shown in blue

UTM GRID AND 1943 MAGNETIC NORTH
DECLINATION AT CENTER OF SHEET

SCALE 1:24,000
CONTOUR INTERVAL 20 FEET
DATUM IS MEAN SEA LEVEL



ROAD CLASSIFICATION
Heavy-duty ——— Light-duty ———
Medium-duty ——— Unimproved dirt ———
State Route

HARTWICK, N. Y.
NE/4 HARTWICK 15' QUADRANGLE
7.5—W7500/7.5

AMS 5969 II NE—SERIES V821

MAY 14 1973

2510