

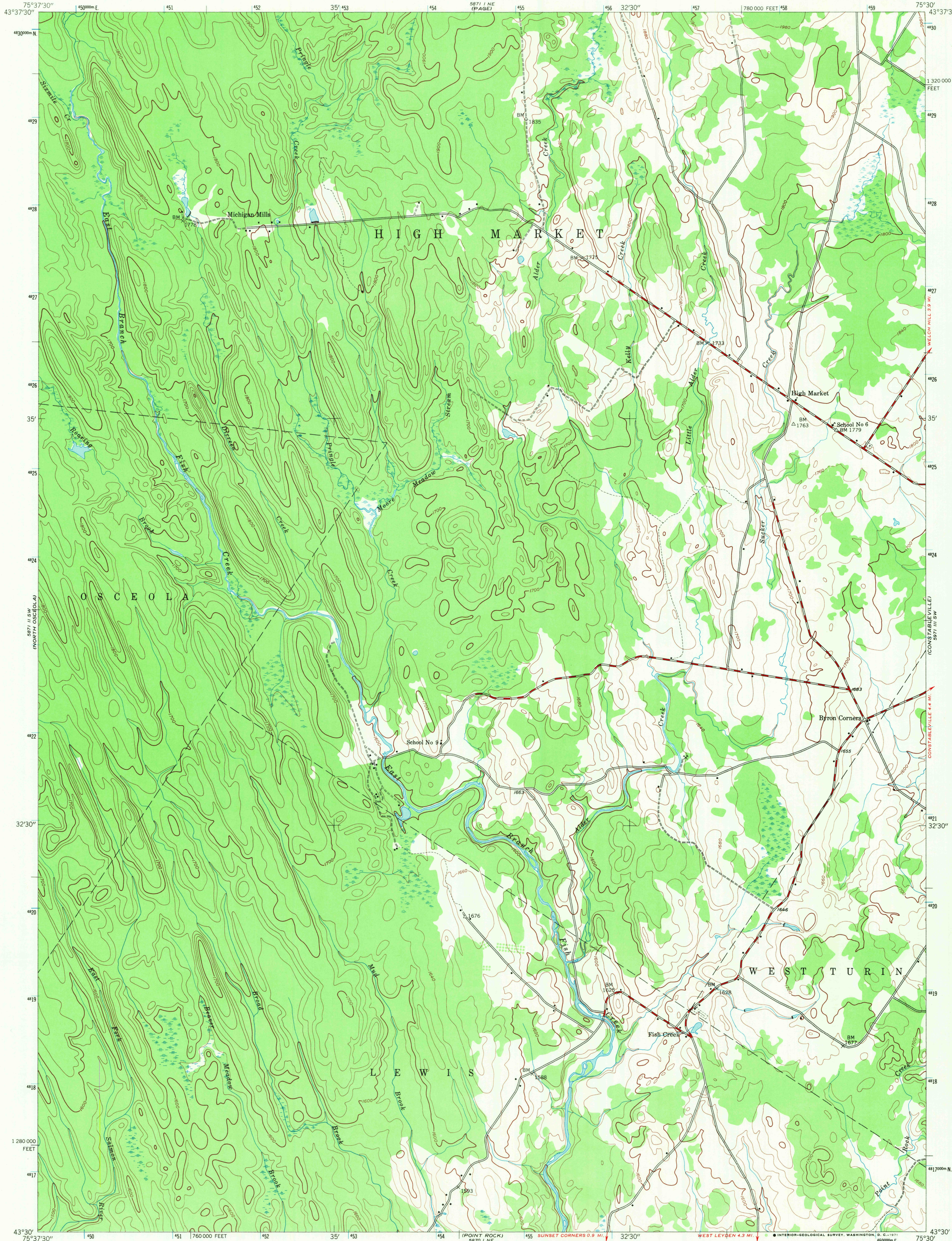
5871 II SW
(PORT LEYDEN 1 62 250)

UNITED STATES
DEPARTMENT OF THE INTERIOR
GEOLOGICAL SURVEY

UNITED STATES
DEPARTMENT OF THE ARMY
CORPS OF ENGINEERS

HIGH MARKET QUADRANGLE
NEW YORK-LEWIS CO.
7.5 MINUTE SERIES (TOPOGRAPHIC)
SE/4 HIGH MARKET 15' QUADRANGLE

5871 II SW
(PORT LEYDEN 1 62 250)



5871 II SW
(PORT LEYDEN 1 62 250)

Mapped by the Army Map Service
Published for civil use by the Geological Survey
Control by USGS, USCGS, and TVA
Topography from aerial photographs by photogrammetric methods
Aerial photographs taken 1942. Field check 1943
Polyconic projection. 1927 North American datum
10,000-foot grid based on New York coordinate system, central zone
1000-meter Universal Transverse Mercator grid ticks,
zone 18, shown in blue

UTM GRID AND 1943 MAGNETIC NORTH
DECLINATION AT CENTER OF SHEET

SCALE 1:24,000
1 MILE
1 KILOMETER
CONTOUR INTERVAL 20 FEET
DATUM IS MEAN SEA LEVEL

USGS
Historical File
Topographic Division



ROAD CLASSIFICATION
Medium-duty ——— Light-duty ———
Unimproved dirt - - - - -

HIGH MARKET, N. Y.
SE/4 HIGH MARKET 15' QUADRANGLE
N4330-W7530/7.5

1943

AMS 5871 II SE-SERIES V921

USGS
FILE COPY
TOPOGRAPHIC DIVISION

APR 6 1974