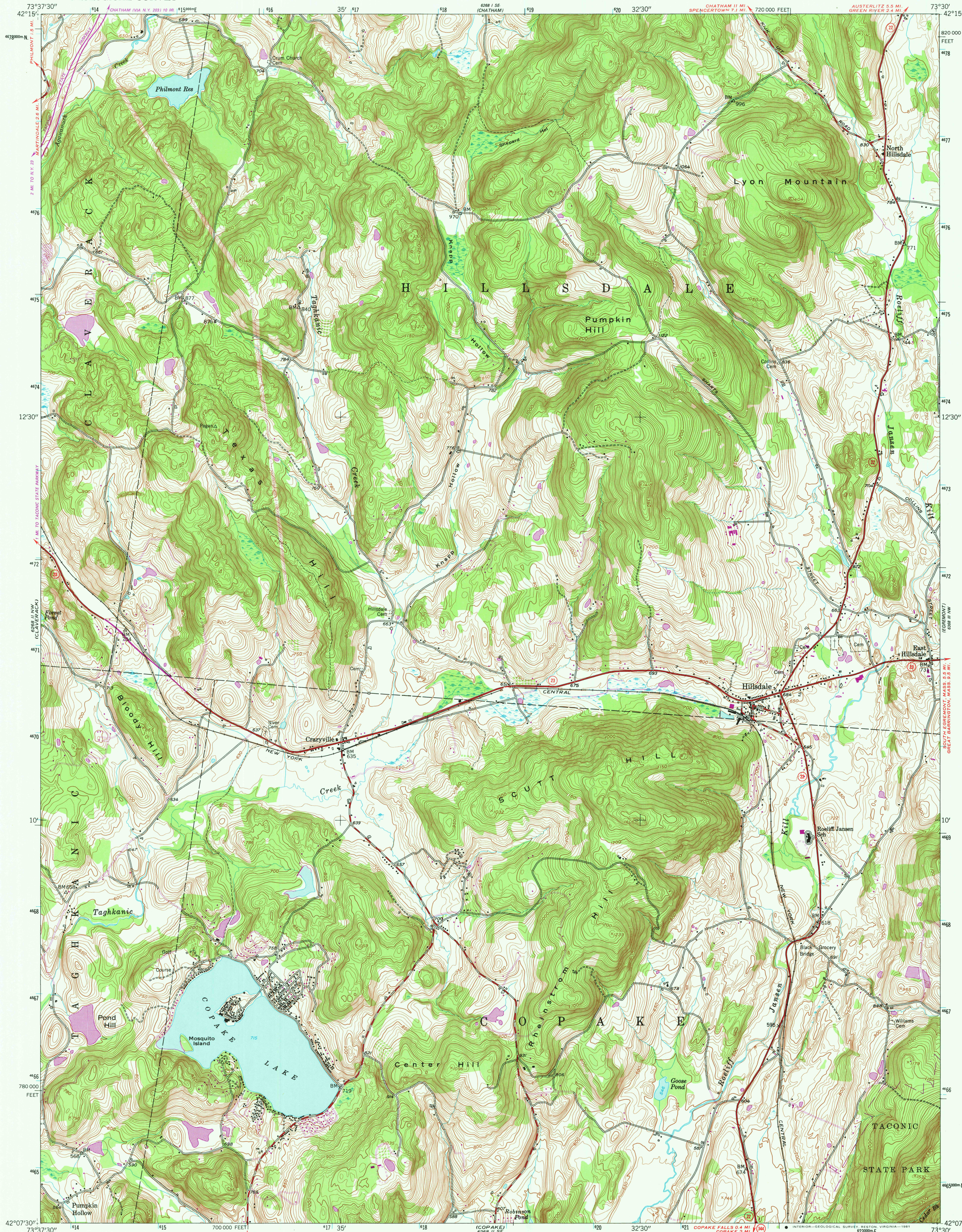
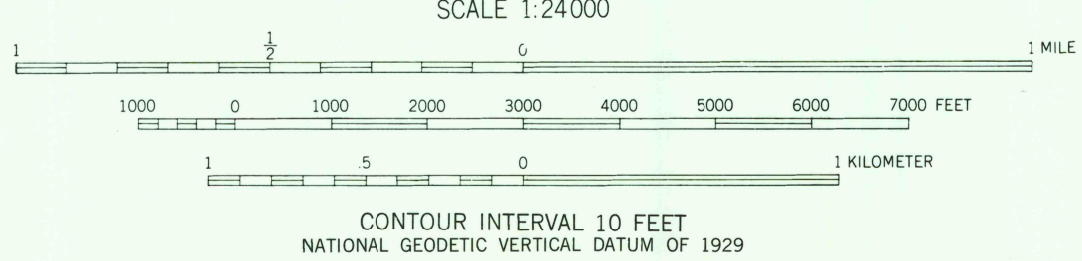
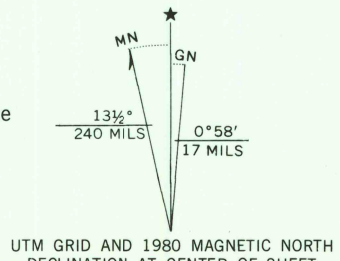


UNITED STATES  
DEPARTMENT OF THE INTERIOR  
GEOLOGICAL SURVEY

HILLSDALE QUADRANGLE  
NEW YORK—COLUMBIA CO.  
7.5 MINUTE SERIES (TOPOGRAPHIC)



Mapped, edited, and published by the Geological Survey  
Control by USGS and NOS/NOAA  
Topography by photogrammetric methods from  
aerial photographs taken 1949. Field checked 1953  
Polyconic projection. 10,000-foot grid ticks based on New York coordinate  
system, east zone. 1000-meter Universal Transverse Mercator grid ticks,  
zone 18, shown in blue. 1927 North American Datum. To place on the  
predicted North American Datum 1983 move the projection lines  
5 meters south and 36 meters west as shown by dashed corner ticks  
There may be private inholdings within the boundaries  
of the National or State reservations shown on this map  
Revisions shown in purple compiled from aerial photographs  
taken 1978 and other source data. This information not  
field checked. Map edited 1980



ROAD CLASSIFICATION	
Heavy-duty	Light-duty
Medium-duty	Unimproved dirt
U. S. Route	State Route

USGS  
HISTORICAL FILE  
NATIONAL MAPPING DIVISION

HILLSDALE, N. Y.  
N4207.5—W73307.5  
1953  
PHOTOREVISED 1980  
DMA 6268 II NE-SERIES V821

MAY 28 1981  
2250