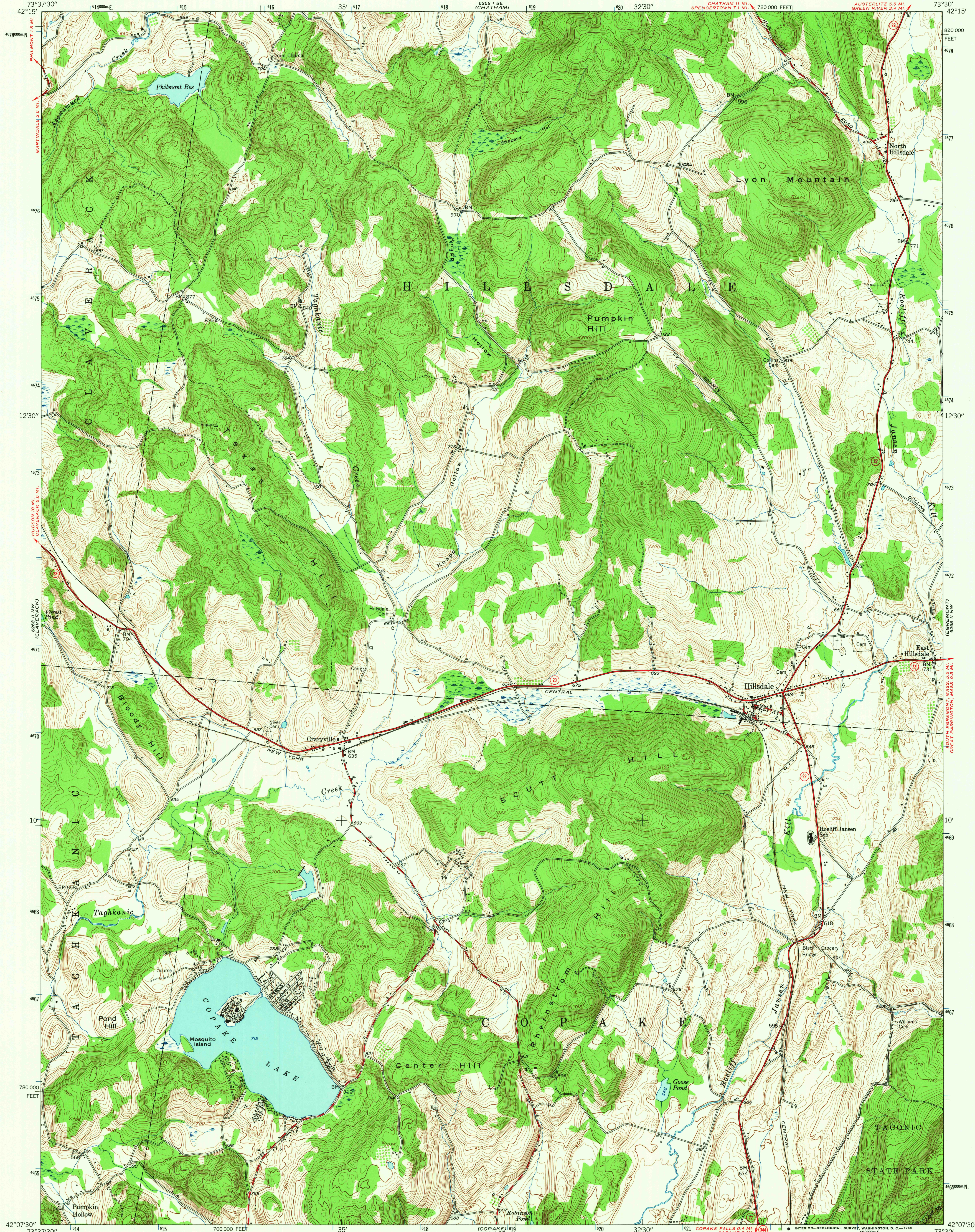
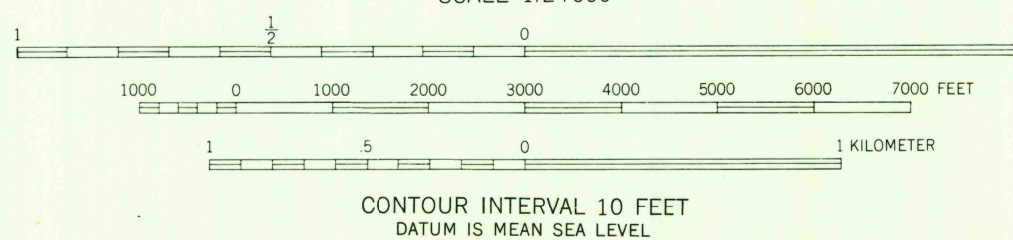
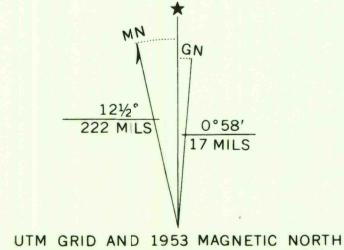


UNITED STATES
DEPARTMENT OF THE INTERIOR
GEOLOGICAL SURVEY

HILLSDALE QUADRANGLE
NEW YORK—COLUMBIA CO.
7.5 MINUTE SERIES (TOPOGRAPHIC)
NE/4 COPAKE 15' QUADRANGLE



Mapped, edited, and published by the Geological Survey
Control by USGS and USC&GS
Topography from aerial photographs by multiplex methods
Aerial photographs taken 1949. Field check 1953
Polyconic projection. 1927 North American datum
10,000-foot grid based on New York coordinate system,
east zone
State Park boundaries shown represent proposed
limits and not state ownership
1000-meter Universal Transverse Mercator grid ticks,
zone 18, shown in blue



USGS
Historical File
Topographic Division



ROAD CLASSIFICATION
Heavy-duty ——— Light-duty ———
Medium-duty ——— Unimproved dirt ———
U. S. Route ——— State Route ———

HILLSDALE, N.Y.
NE/4 COPAKE 15' QUADRANGLE
N4207.5—W7330/7.5

1953
AMS 6268 II NE—SERIES V82 I

THIS MAP COMPLIES WITH NATIONAL MAP ACCURACY STANDARDS
FOR SALE BY U. S. GEOLOGICAL SURVEY, WASHINGTON, D. C. 20242
A FOLDER DESCRIBING TOPOGRAPHIC MAPS AND SYMBOLS IS AVAILABLE ON REQUEST

3165
U.S.G.S.
FILE COPY
TOPOGRAPHIC DIVISION