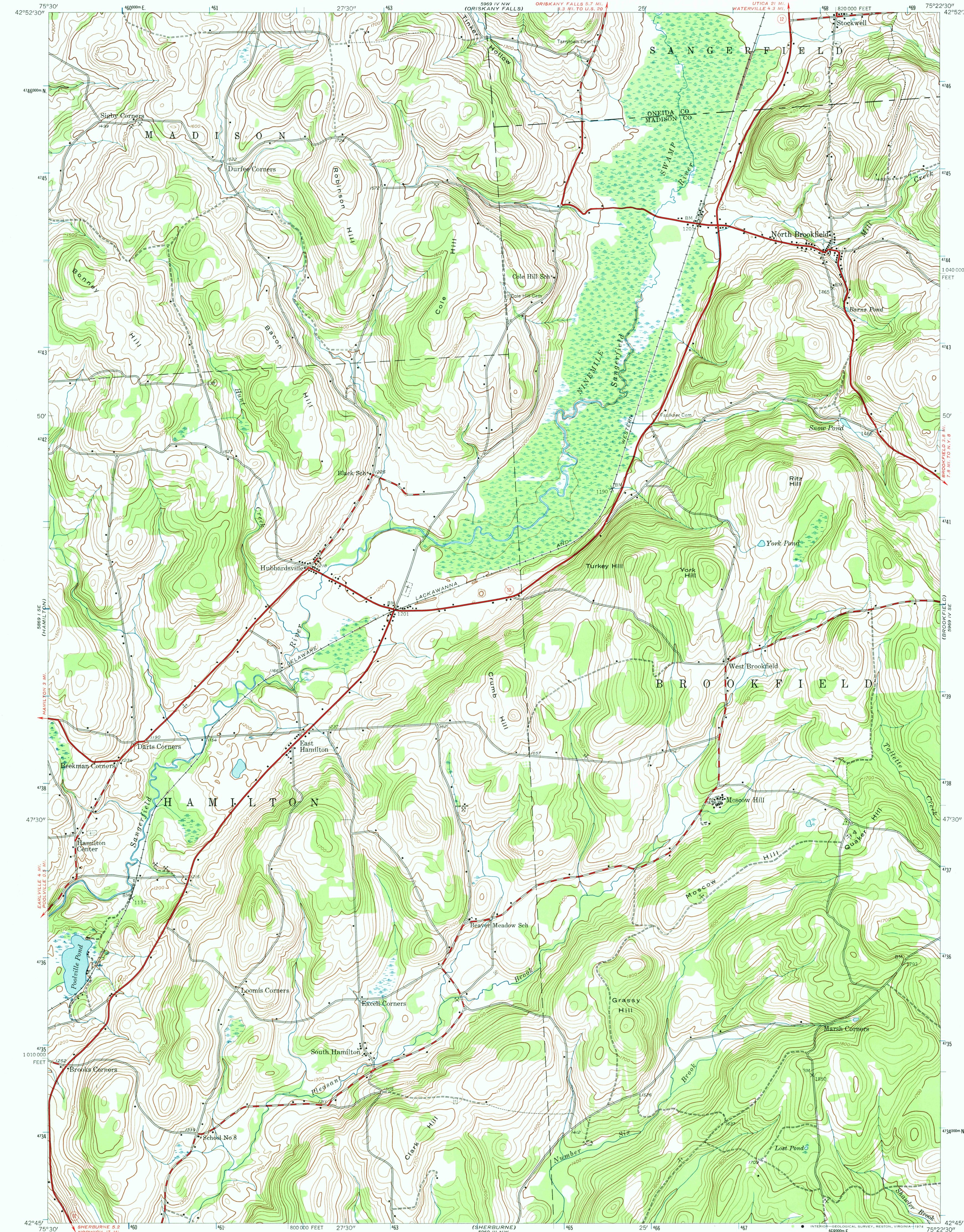


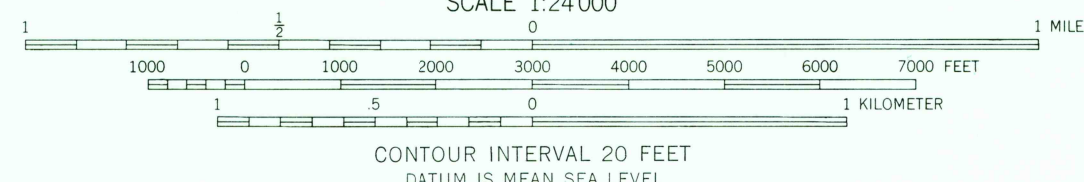
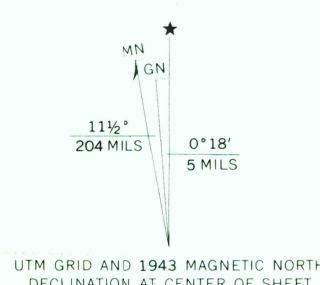
UNITED STATES
DEPARTMENT OF THE INTERIOR
GEOLOGICAL SURVEY

UNITED STATES
DEPARTMENT OF THE ARMY
CORPS OF ENGINEERS
(ORISKANY FALLS)

HUBBARDSVILLE QUADRANGLE
NEW YORK
7.5 MINUTE SERIES (TOPOGRAPHIC)
SW 1/4 SANGERFIELD 15' QUADRANGLE



Mapped by the Army Map Service
Published for civil use by the Geological Survey
Control by USCGS and TVA
Topography from aerial photographs by photogrammetric methods
Aerial photographs taken 1942. Field check 1943
Polyconic projection. 1927 North American datum
10,000-foot grid based on New York coordinate system, central zone
1000-meter Universal Transverse Mercator grid ticks,
zone 18, shown in blue



ROAD CLASSIFICATION
Heavy-duty ——— Light-duty ———
Medium-duty ——— Unimproved dirt ———
State Route ———

HUBBARDSVILLE, N. Y.
SW 1/4 SANGERFIELD 15' QUADRANGLE
N 4245 — W 7522.5/7.5

1943
AMS 5959 IV SW — SERIES V821

JAN 10 1974