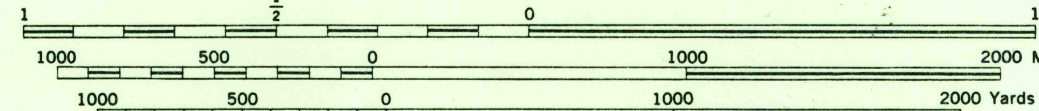


U.S.G.S.  
FILE COPY  
TOPOGRAPHIC DIVISION

A.M.S. V821  
First Edition (AMS 1), 1943; (AMS 2), 1947.

Prepared under the direction of the Chief of Engineers by the Army Map Service (AM), War Department, Washington, D.C. Marginal data revised and Universal Transverse Mercator Grid added, 1947. Copied in 1947 from New York, 1:25,000, AMS, Huntington, 1943. Original map compiled by the Army Map Service. Planimetry revised by photo-planimetric methods; topography by the 29th Engineer Battalion, U.S. Army, planimetric surveys. Horizontal and vertical control by USGS and the 29th Engineer Battalion, U.S. Army. Aerial photography by Agricultural Adjustment Administration, 1940.

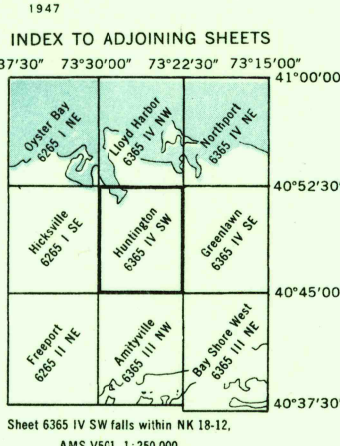
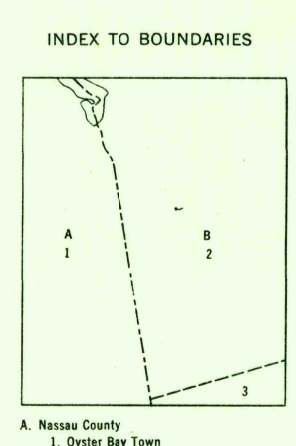
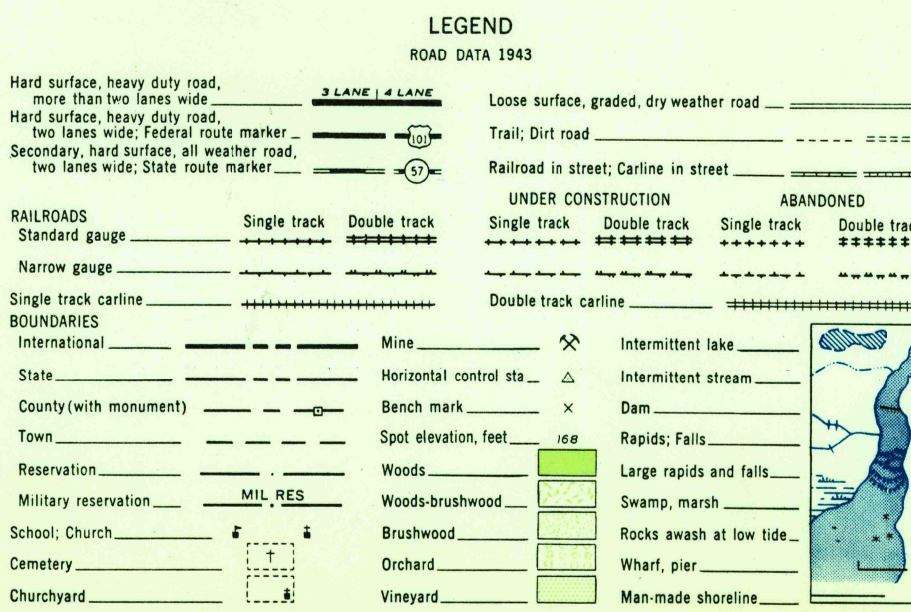
SCALE 1:24,000



CONTOUR INTERVAL 20 FEET  
DATUM IS MEAN SEA LEVEL

TRANSVERSE MERCATOR PROJECTION  
1927 NORTH AMERICAN DATUM

USGS  
Historical File  
Topographic Division



U.S.G.S.  
FILE COPY  
TOPOGRAPHIC DIVISION

REPRINTED FROM MILITARY EDITION FOR CIVIL USE  
SOLD AND DISTRIBUTED BY U. S. GEOLOGICAL SURVEY, WASHINGTON 25, D. C.

HUNTINGTON, NEW YORK  
N4045-W7322.5/7.5

AUG 25 1955  
1130