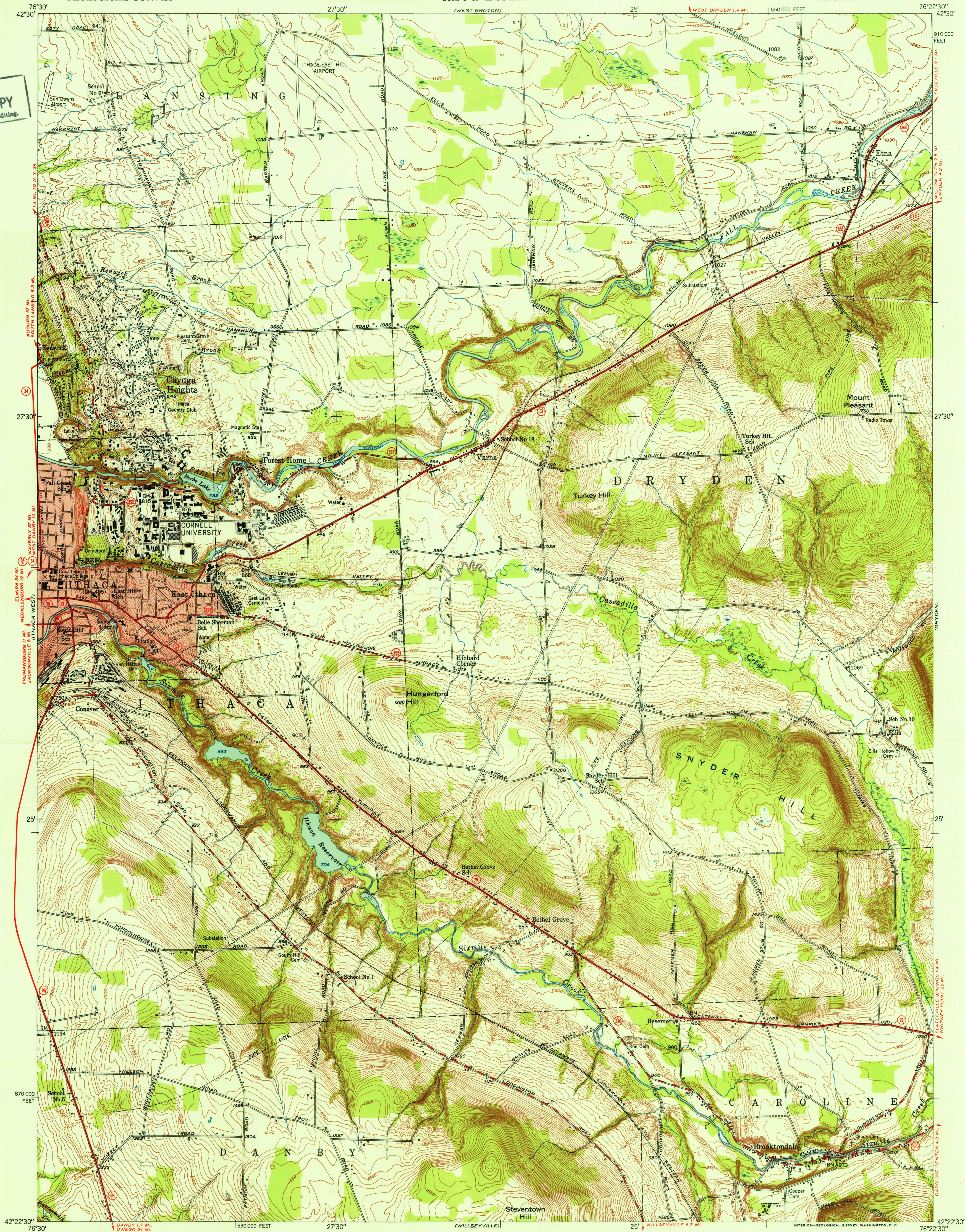
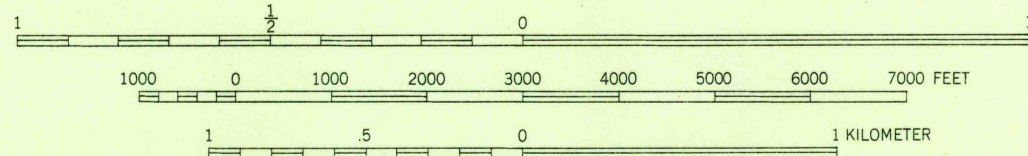


U.S.G.S.
FILE COPY
Inspection and Editing.



Mapped, edited, and published by the Geological Survey
Control by USGS and USC&GS
Topography from aerial photographs by multiplex methods
Aerial photographs taken 1944. Field check 1949
Polyconic projection. 1927 North American datum
10,000-foot grid based on New York coordinate system,
central zone
Red tint indicates area in which only
landmark buildings are shown

APPROXIMATE MEAN
DECLINATION, 1949



CONTOUR INTERVAL 10 FEET
DATUM IS MEAN SEA LEVEL

THIS MAP COMPLIES WITH NATIONAL MAP ACCURACY STANDARDS
FOR SALE BY U. S. GEOLOGICAL SURVEY, WASHINGTON 25, D. C.
A FOLDER DESCRIBING TOPOGRAPHIC MAPS AND SYMBOLS IS AVAILABLE ON REQUEST

USGS
Historical File
Topographic Division

U.S.G.S.
FILE COPY
Inspection and Editing.

ROAD CLASSIFICATION
Heavy-duty... 4 LANE 16 LANE
Medium-duty... 4 LANE 16 LANE
Light duty...
Unimproved dirt
U. S. Route
State Route

ITHACA EAST, N. Y.
NW/4 DRYDEN 15' QUADRANGLE
N4222.5-W7622.5/7.5

EDITION OF 1951