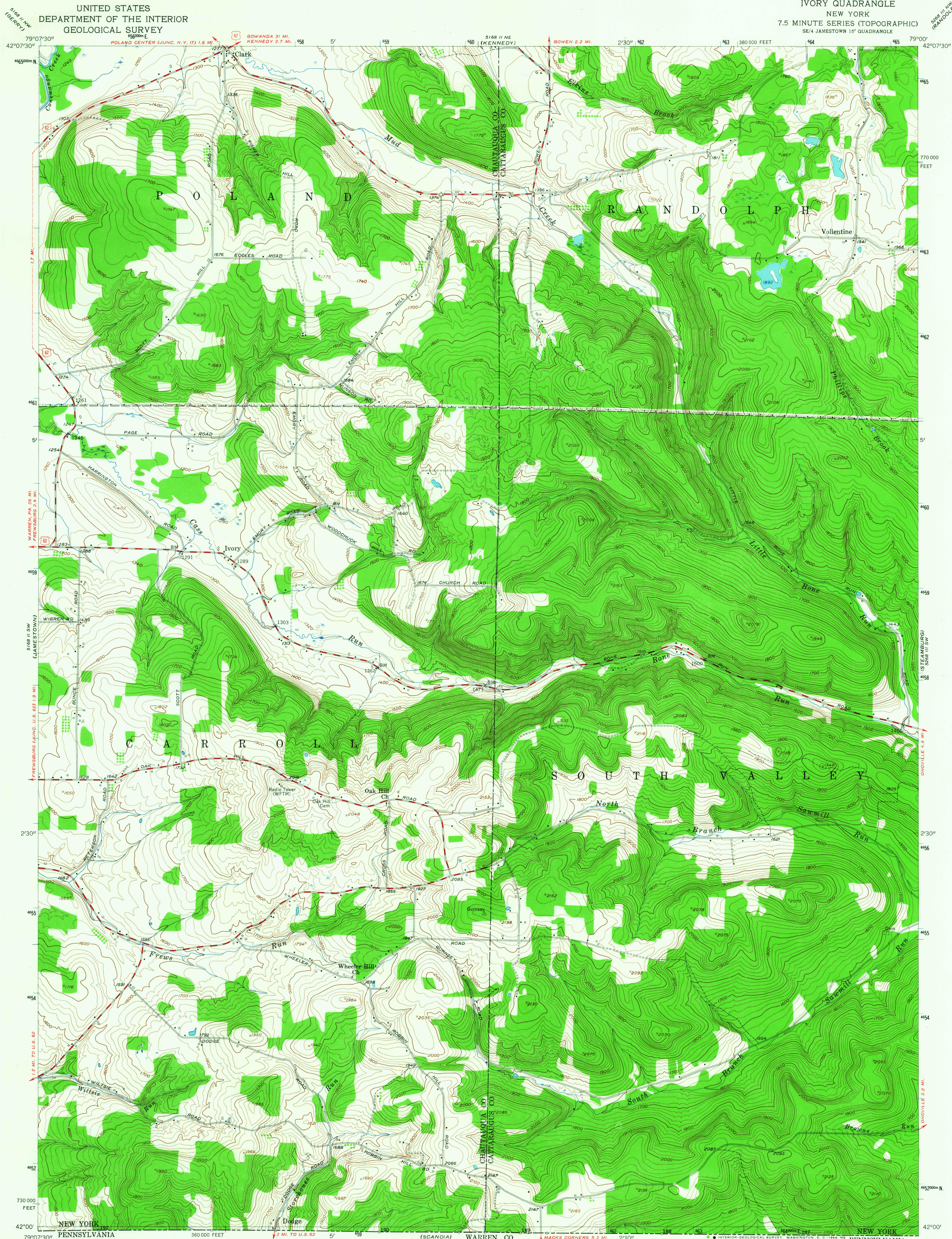


UNITED STATES  
DEPARTMENT OF THE INTERIOR  
GEOLOGICAL SURVEY

IVORY QUADRANGLE  
NEW YORK  
7.5 MINUTE SERIES (TOPOGRAPHIC)  
SE/4 JAMESTOWN 15' QUADRANGLE



Mapped, edited, and published by the Geological Survey

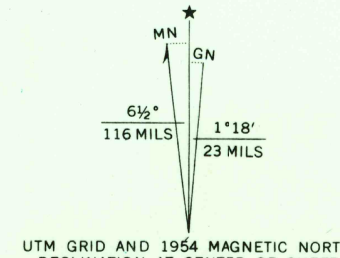
Control by USGS and USC&GS

Topography from aerial photographs by photogrammetric methods. Aerial photographs taken 1953. Field check 1954

Polycyclic projection. 1927 North American datum 10,000-foot grid based on New York coordinate system, west zone

Unchecked elevations are shown in brown

1000-meter Universal Transverse Mercator grid ticks, zone 17, shown in blue



CONTOUR INTERVAL 20 FEET  
DATUM IS MEAN SEA LEVEL

THIS MAP COMPLIES WITH NATIONAL MAP ACCURACY STANDARDS  
FOR SALE BY U.S. GEOLOGICAL SURVEY, WASHINGTON, D.C. 20542  
A FOLDER DESCRIBING TOPOGRAPHIC MAPS AND SYMBOLS IS AVAILABLE ON REQUEST

USGS  
Historical File  
Topographic Division



U.S.G.S.  
FIVE MILE  
TOPOGRAPHIC DIVISION

ROAD CLASSIFICATION  
Heavy-duty ——— Light-duty ———  
Medium-duty ——— Unimproved dirt ———  
U.S. Route ——— State Route ———

IVORY, N. Y.  
SE/4 JAMESTOWN 15' QUADRANGLE  
N 4200-W 7900/7.5

1954  
AMS 5168 II SE-SERIES V821

2105  
OCT 5 1956