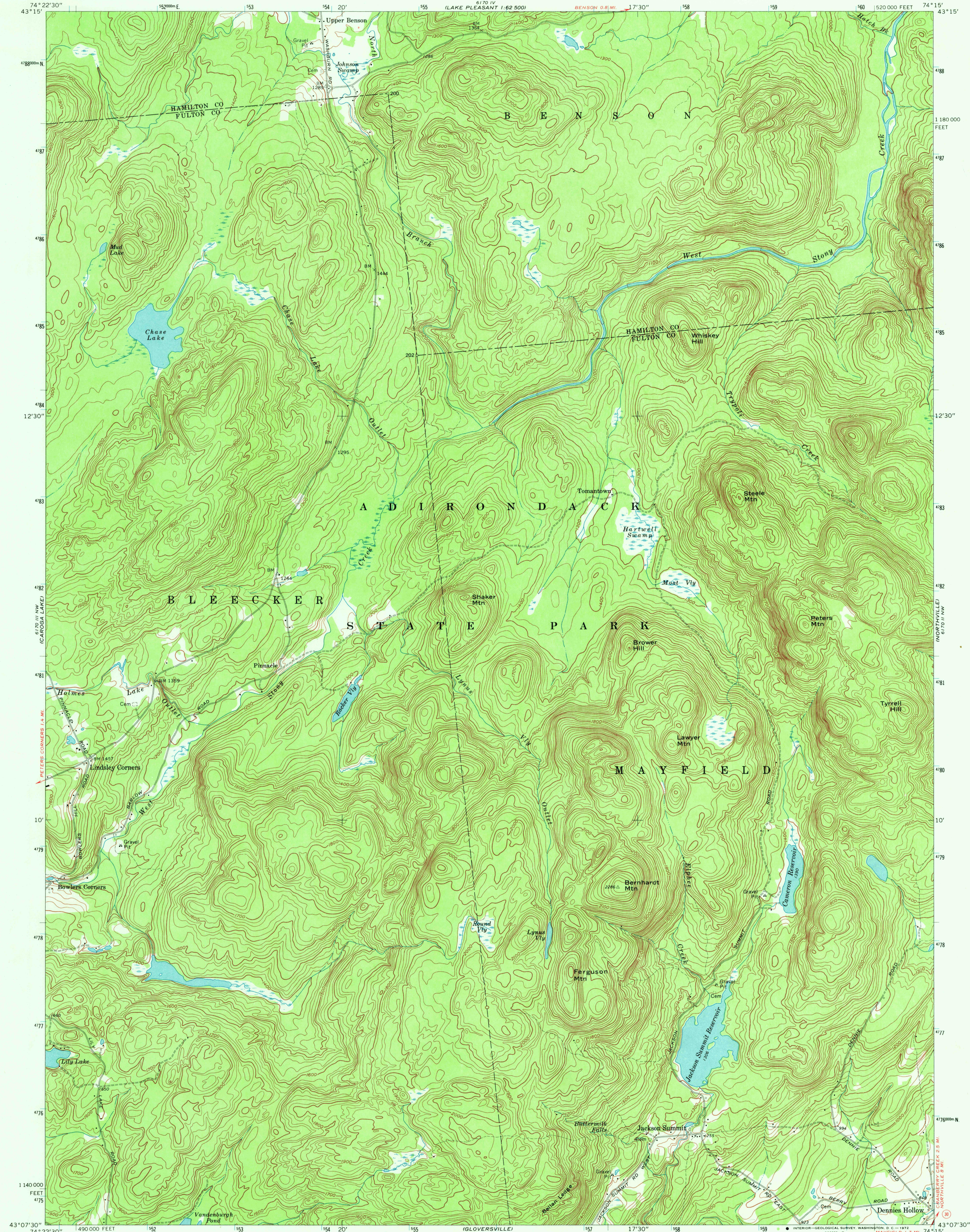
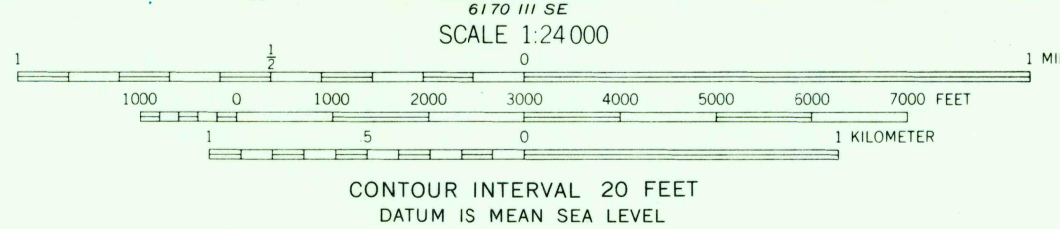
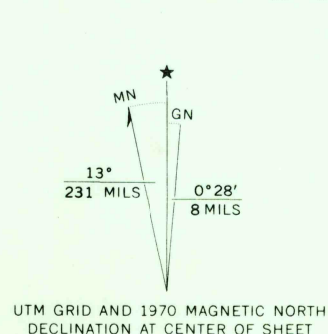


UNITED STATES
DEPARTMENT OF THE INTERIOR
GEOLOGICAL SURVEY

JACKSON SUMMIT QUADRANGLE
NEW YORK
7.5 MINUTE SERIES (TOPOGRAPHIC)



Maped by the Army Map Service
Edited and published by the Geological Survey
Revised by the Geological Survey in cooperation with New York
Department of Transportation
Control by USGS and USC&GS
Topography by photogrammetric methods from aerial photographs
taken 1943-1944. Field checked 1945. Revised from aerial
photographs taken 1969. Field checked 1970
Polyconic projection. 1927 North American datum
10,000-foot grid based on New York coordinate system, east zone
1000-meter Universal Transverse Mercator grid ticks, zone 18,
shown in blue



ROAD CLASSIFICATION
Primary highway, hard surface
Secondary highway, hard surface
Unimproved road
Interstate Route
U. S. Route
State Route

JACKSON SUMMIT, N. Y.
N4307.5-W7415.7.5

1970

AMS 6170 III NE-SERIES V8211 TOPOGRAPHIC DIVISION

2830