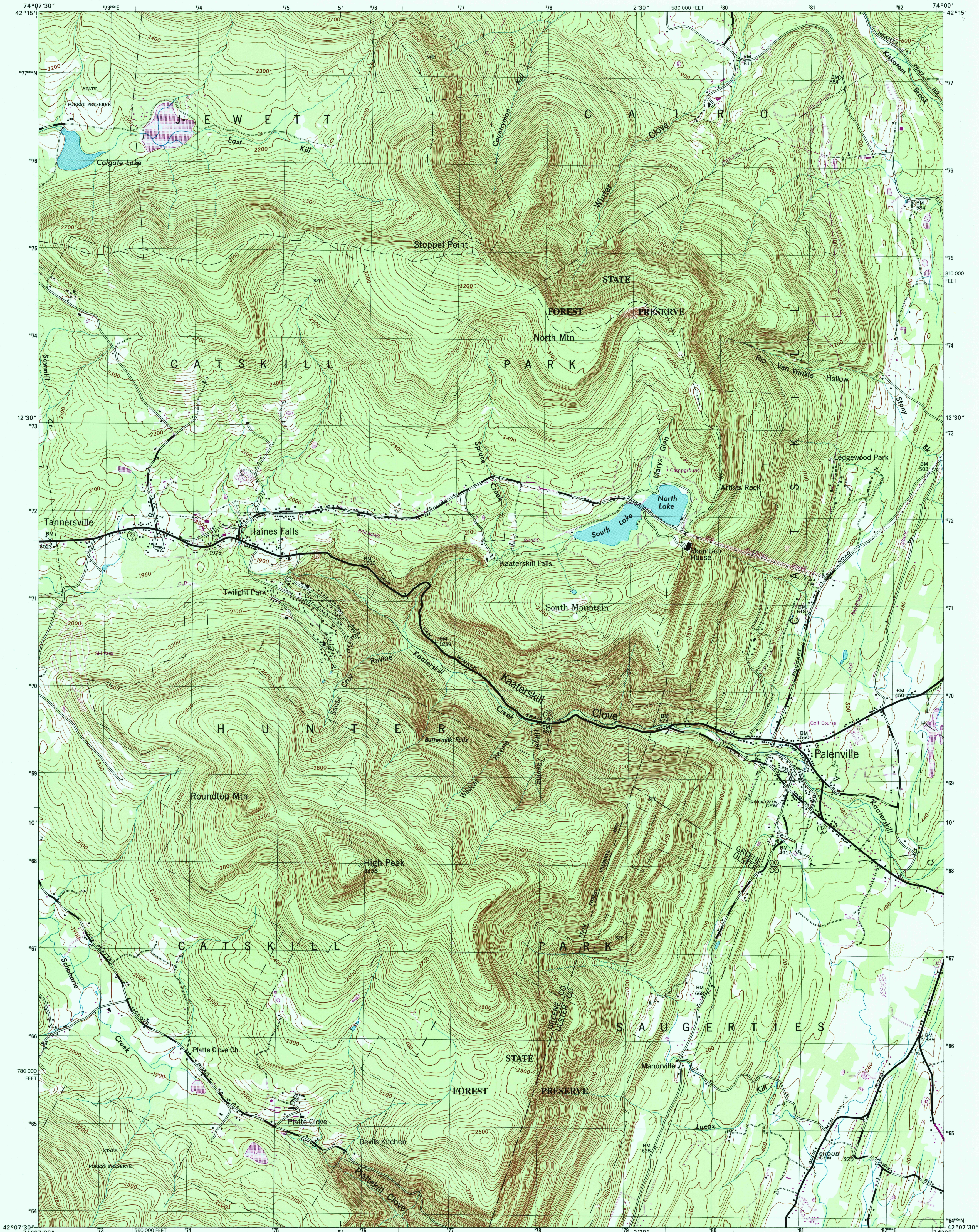


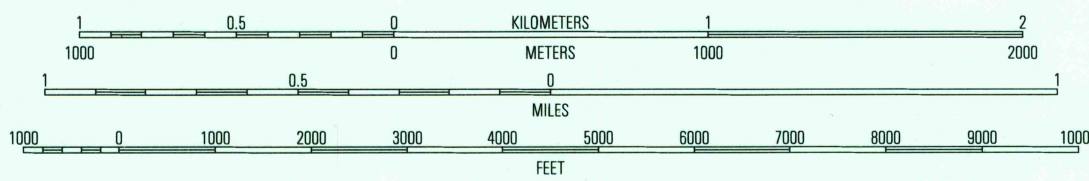
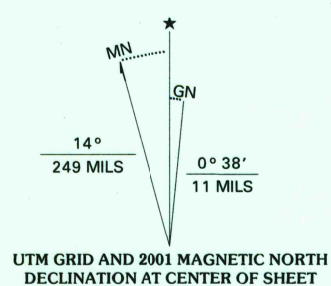


U.S. DEPARTMENT OF THE INTERIOR
U.S. GEOLOGICAL SURVEY

KAATERSKILL CLOVE QUADRANGLE
NEW YORK
7.5-MINUTE SERIES (TOPOGRAPHIC)



Produced by the United States Geological Survey
Topography compiled 1943. Planimetry derived from imagery taken 1978 and other sources. Photinspected using imagery dated 1997; no major culture or drainage changes observed. Survey control current as of 1943. Boundaries, other than corporate, revised 2000
North American Datum of 1927 (NAD 27). Projection and 10 000-foot ticks: New York coordinate system, east zone (transverse Mercator)
1000-meter Universal Transverse Mercator grid, zone 18
North American Datum of 1983 (NAD 83) is shown by dashed corner ticks. The values of the shift between NAD 27 and NAD 83 for 7.5-minute intersections are obtainable from National Geodetic Survey NADCON software
There may be private inholdings within the boundaries of the National or State reservations shown on this map
Information shown in purple may not meet USGS content standards and may conflict with previously mapped contours



CONTOUR INTERVAL 20 FEET
NATIONAL GEODETIC VERTICAL DATUM OF 1929
TO CONVERT FROM FEET TO METERS, MULTIPLY BY 0.3048



ROAD CLASSIFICATION
Primary highway
Secondary highway
Light-duty road, hard or improved surface
Unimproved road
Interstate Route
U.S. Route
State Route

1	2	3
4	5	6
7	8	9

1 Honesville
2 Freehold
3 Leeds
4 Hunter
5 Cementon
6 Bearville
7 Woodstock
8 Saugerties

KAATERSKILL CLOVE, NY
1997

NIMA 6168 II E-SERIES V821

RECEIVED
APR 30 2001
USGS NWL
HISTORICAL MAP ARCHIVES

