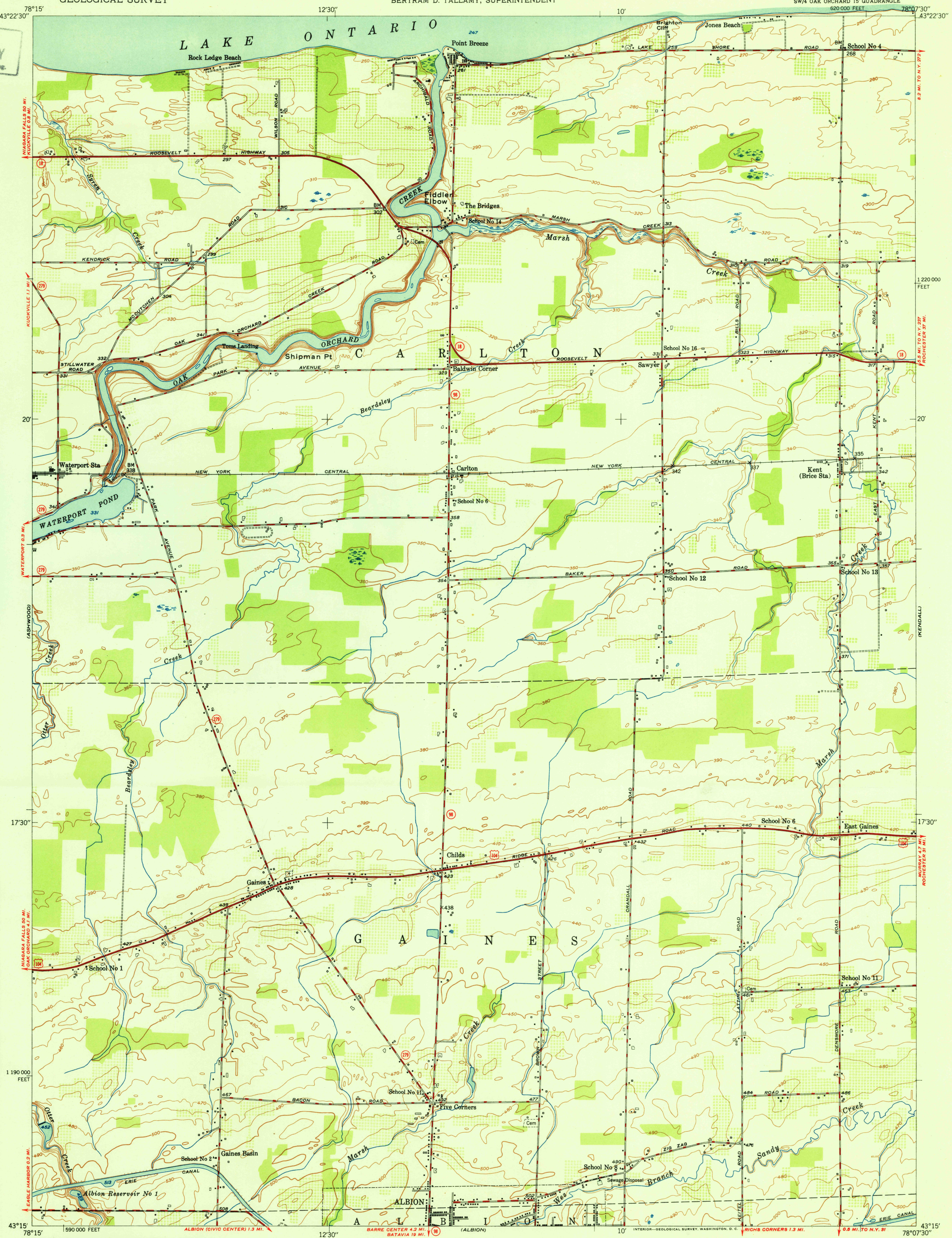


U. S. G. S.
FILE COPY
Inspection and Editing.



Mapped, edited, and published by the Geological Survey
Control by USGS, USC&GS, and USED



Culture and drainage in part compiled by Corps of Engineers,
Dept. of the Army, from aerial photographs taken 1942
Topography by plane-table methods 1948

Polyconic projection. 1927 North American datum
10,000-foot grid based on New York coordinate system,
west zone

CONTOUR INTERVAL 10 FEET
DATUM IS MEAN SEA LEVEL

THIS MAP COMPLIES WITH NATIONAL MAP ACCURACY STANDARDS
FOR SALE BY U. S. GEOLOGICAL SURVEY, WASHINGTON 25, D. C.
A FOLDER DESCRIBING TOPOGRAPHIC MAPS AND SYMBOLS IS AVAILABLE ON REQUEST

ROAD CLASSIFICATION

HARD-SURFACE ALL WEATHER ROADS	DRY WEATHER ROADS
Heavy-duty... <u> </u> <u>2 LANE 16 LANE</u>	Improved dirt... <u>=====</u>
Medium-duty... <u> </u> <u>1 LANE 16 LANE</u>	Unimproved dirt <u>=====</u>
Loose-surface, graded, or narrow hard-surface <u> </u> <u> </u> <u> </u>	
 U. S. Route	 State Route

KENT, N. Y.
SW/4 OAK ORCHARD 15' QUADRANGLE
N4315—W7807.5/7.5

EDITION OF 1951