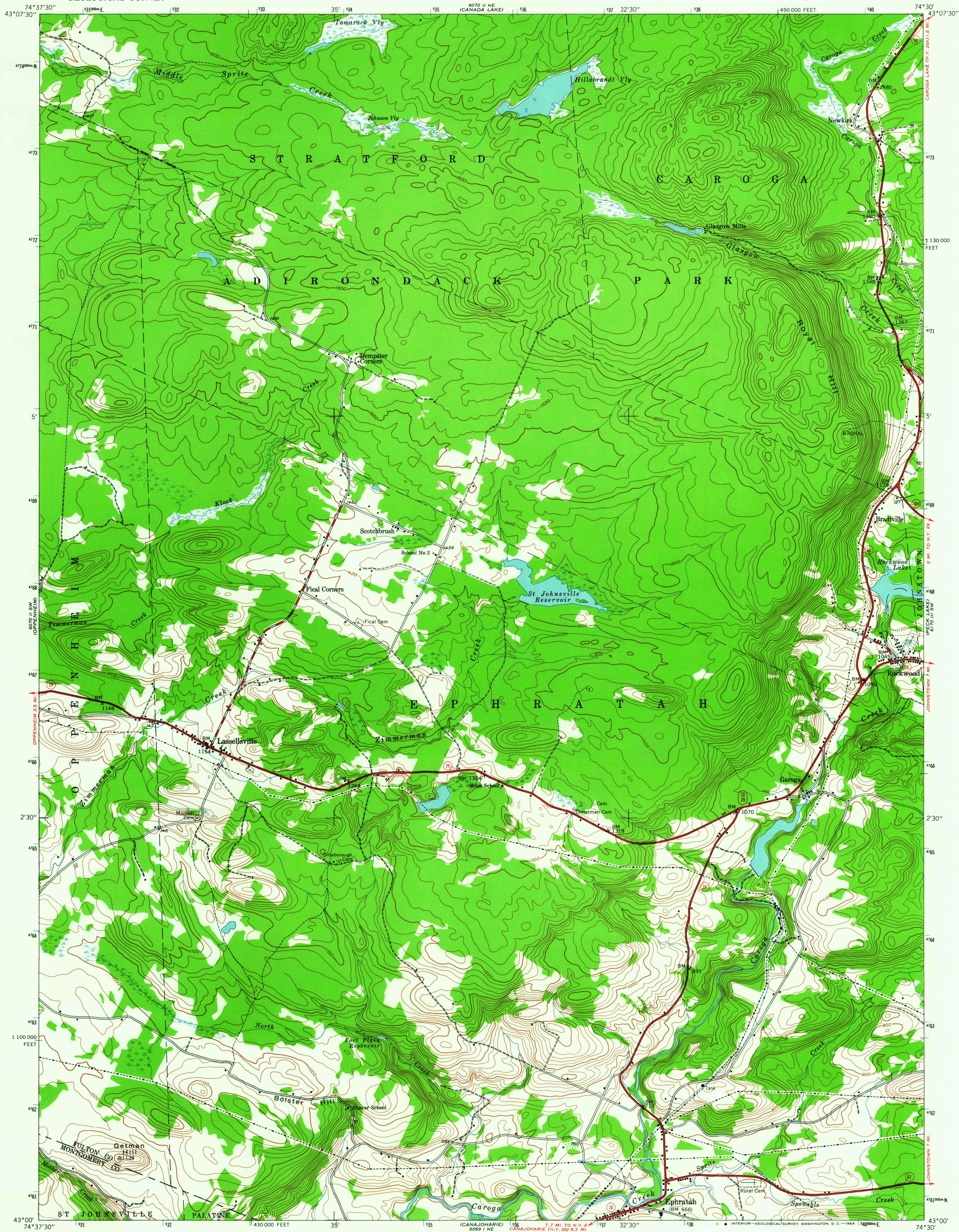
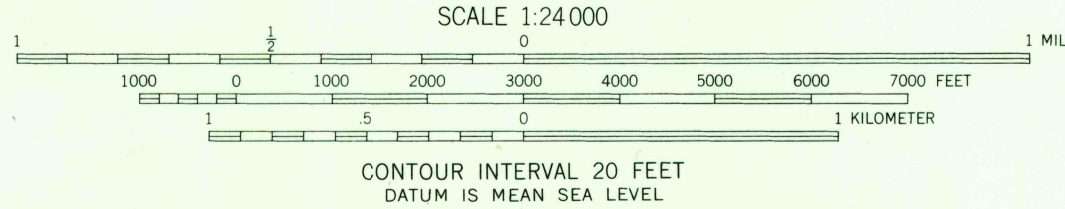
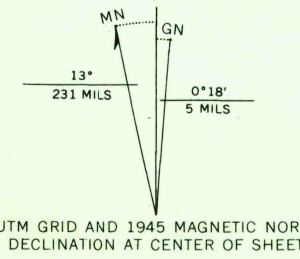


UNITED STATES
DEPARTMENT OF THE INTERIOR
GEOLOGICAL SURVEY

LASSELLSVILLE QUADRANGLE
NEW YORK
7.5 MINUTE SERIES (TOPOGRAPHIC)
SE/4 LASSELLSVILLE 15' QUADRANGLE



Mapped by the Army Map Service
Published for civil use by the Geological Survey
Control by USC&GS and TVA
Topography by stereophotogrammetric methods from
aerial photographs taken 1943. Field checked 1945
Polyconic projection. 1927 North American datum
10,000-foot grid based on New York coordinate system, east zone
1000-meter Universal Transverse Mercator grid ticks,
zone 18, shown in blue



THIS MAP COMPLIES WITH NATIONAL MAP ACCURACY STANDARDS
FOR SALE BY U. S. GEOLOGICAL SURVEY, WASHINGTON 25, D. C.
A FOLDER DESCRIBING TOPOGRAPHIC MAPS AND SYMBOLS IS AVAILABLE ON REQUEST



ROAD CLASSIFICATION

Heavy-duty	Light-duty
Medium-duty	Unimproved dirt
State Route	

LASSELLSVILLE, N. Y.
SE/4 LASSELLSVILLE 15' QUADRANGLE
N4300-W7430/7.5
1945
AMS 6070 II SE-SERIES V821

SEP 21 1954

1595

USGS
COPY