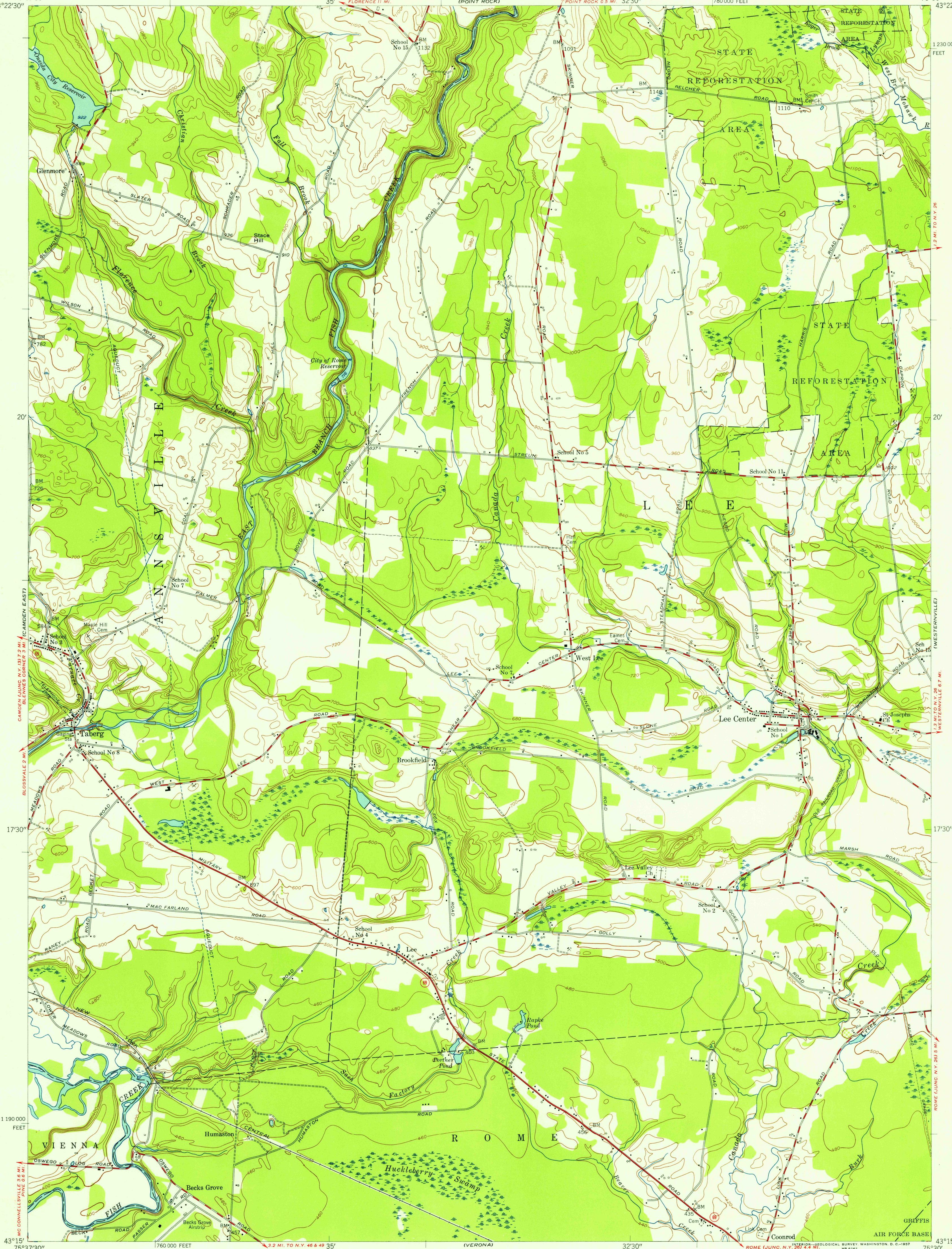


75°37'30"  
43°22'30"

75°30'  
43°22'30"

(FLORENCE)  
(WEST LEBYDEN)



Map by the Army Map Service  
Edited and published by the Geological Survey  
Control by USGS, USC&GS, and TVA  
Topography from aerial photographs by multiplex  
methods. Aerial photographs taken 1942  
Field check 1943  
Culture revised by the Geological Survey 1955  
Polyconic projection. 1927 North American datum  
10,000-foot grid based on New York coordinate system,  
central zone

12°  
TRUE NORTH  
MAGNETIC NORTH  
APPROXIMATE MEAN  
DECLINATION, 1955

SCALE 1:24,000  
1 0 1000 2000 3000 4000 5000 6000 7000 FEET  
1 5 0 1 KILOMETER  
CONTOUR INTERVAL 20 FEET  
DATUM IS MEAN SEA LEVEL

USGS  
Historical File  
Topographic Division



ROAD CLASSIFICATION  
Heavy-duty ——— Light-duty ———  
Medium-duty ——— Unimproved dirt ———  
State Route ———

LEE CENTER, N.Y.  
SE/4 TABERG 15' QUADRANGLE  
N4315-W7530/7.5

1955

U.S.G.S.  
FILE COPY  
Topographic Division

THIS MAP COMPLIES WITH NATIONAL MAP ACCURACY STANDARDS  
FOR SALE BY U. S. GEOLOGICAL SURVEY, WASHINGTON 25, D. C.  
A FOLDER DESCRIBING TOPOGRAPHIC MAPS AND SYMBOLS IS AVAILABLE ON REQUEST

JUL 26 1957

3150