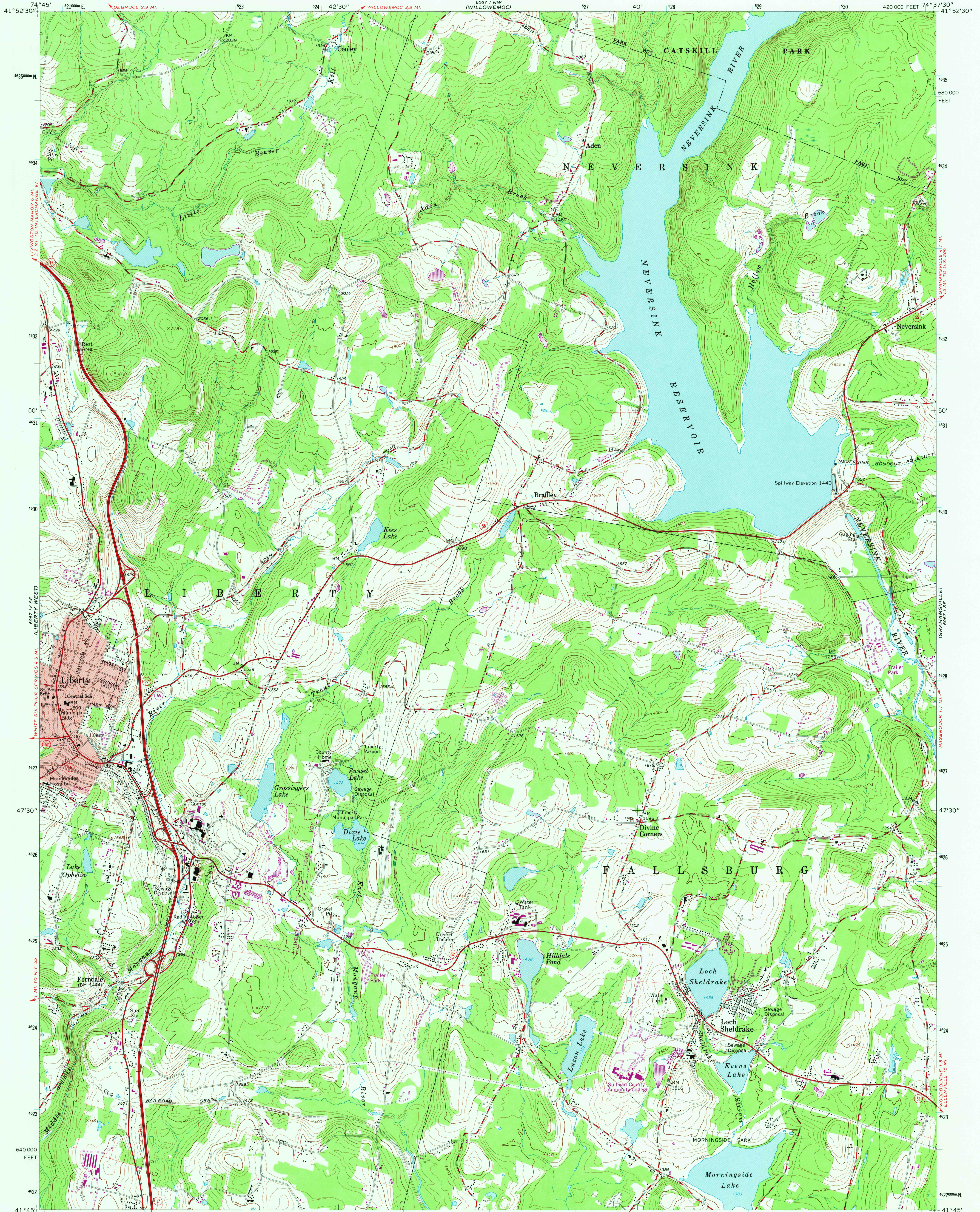


UNITED STATES
DEPARTMENT OF THE INTERIOR
GEOLOGICAL SURVEY

LIBERTY EAST QUADRANGLE
NEW YORK-SULLIVAN CO.
7.5 MINUTE SERIES (TOPOGRAPHIC)



Mapped, edited, and published by the Geological Survey
Control by USGS and NOS/NOAA

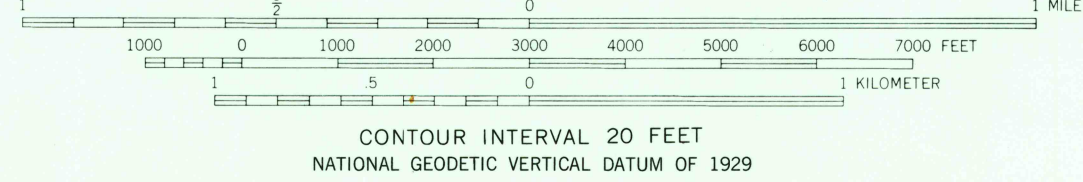
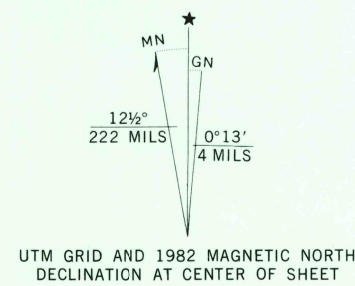
Topography by photogrammetric methods from aerial photographs
taken 1963. Field checked 1966

Polyconic projection. 10,000-foot grid ticks based on New York
coordinate system, east zone. 1000-meter Universal Transverse
Mercator grid ticks, zone 18, shown in blue. 1927 North
American Datum. To place on the predicted North American
Datum 1983 move the projection lines 5 meters south and
33 meters west as shown by dashed corner ticks

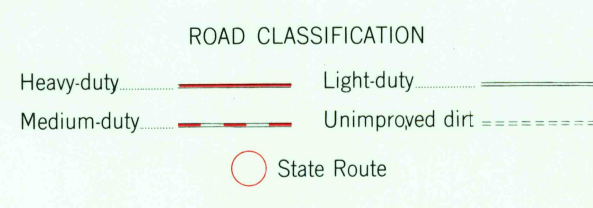
Fine red dashed lines indicate selected fence and field lines where
generally visible on aerial photographs. This information is unchecked

Red tint indicates area in which only landmark buildings are shown

There may be private inholdings within the boundaries of
the National or State reservations shown on this map



THIS MAP COMPLIES WITH NATIONAL MAP ACCURACY STANDARDS
FOR SALE BY U. S. GEOLOGICAL SURVEY, RESTON, VIRGINIA 22092
A FOLDER DESCRIBING TOPOGRAPHIC MAPS AND SYMBOLS IS AVAILABLE ON REQUEST



LIBERTY EAST, N. Y.

N4145-W7437.5/7.5

1966
PHOTOREVISED 1982
DMA 6067 1 SW-SERIES V821

Revisions shown in purple and woodland compiled from aerial
photographs taken 1981 and other sources. This information
not field checked. Map edited 1982

SEP 1 1982
RETURN TO:
USGS AND HISTORICAL MAP ARCHIVES