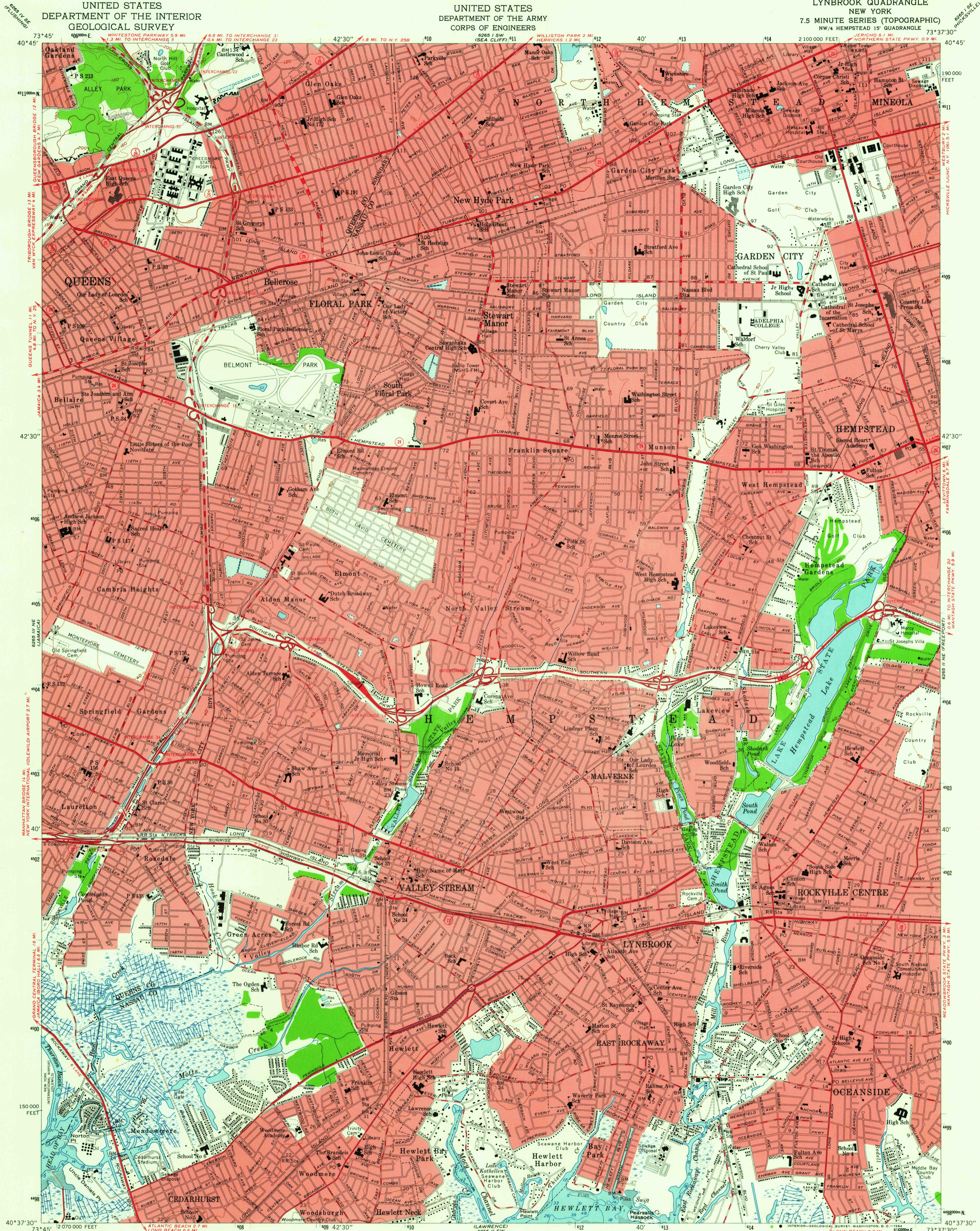


UNITED STATES
DEPARTMENT OF THE INTERIOR
GEOLOGICAL SURVEY

UNITED STATES
DEPARTMENT OF THE ARMY
CORPS OF ENGINEERS

LYNBROOK QUADRANGLE
NEW YORK
7.5 MINUTE SERIES (TOPOGRAPHIC)
NW/4 HEMPSTEAD 15' QUADRANGLE



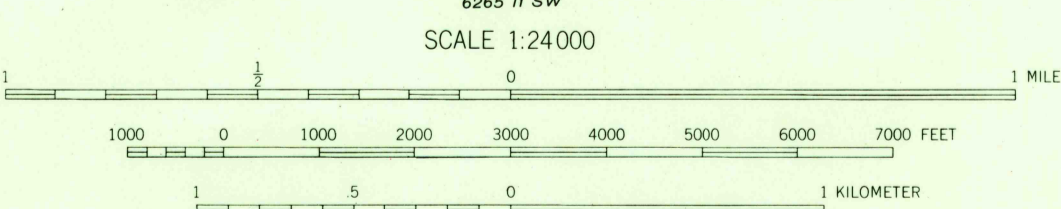
Map by the Army Map Service
Edited and published by the Geological Survey
Control by US&GS, USCE, and Nassau County

Culture and drainage in part compiled from
aerial photographs taken 1941. Topography
by planetable surveys 1944. Culture revised
by the Geological Survey 1954

Hydrography from US&GS charts 542(1955)
and 579A(1953)

Polyconic projection. 1927 North American datum
10,000-foot grid based on New York coordinate
system, Long Island zone
1,000-meter Universal Transverse Mercator grid ticks,
zone 18, shown in blue
Red tint indicates areas in which only
landmark buildings are shown

UTM GRID AND 1954 MAGNETIC NORTH
DECLINATION AT CENTER OF SHEET



CONTOUR INTERVAL 20 FEET
DATUM IS MEAN SEA LEVEL
DEPTH CURVES AND SOUNDINGS IN FEET—DATUM IS MEAN LOW WATER
SHORELINE SHOWN REPRESENTS THE APPROXIMATE LINE OF MEAN HIGH WATER
THE MEAN RANGE OF TIDE IS APPROXIMATELY 19 FEET AT
EAST ROCKAWAY AND 5.4 FEET AT NORTH POINT

THIS MAP COMPLIES WITH NATIONAL MAP ACCURACY STANDARDS
FOR SALE BY U. S. GEOLOGICAL SURVEY, WASHINGTON 25, D. C.
A FOLDER DESCRIBING TOPOGRAPHIC MAPS AND SYMBOLS IS AVAILABLE ON REQUEST

USGS
Historical File
Topographic Division



ROAD CLASSIFICATION
Heavy-duty ——— Light-duty ———
Medium-duty ——— Unimproved dirt ———
State Route ———

LYNBROOK, N. Y.
NW/4 HEMPSTEAD 15' QUADRANGLE
N4037.5-W7337.5/7.5
1954
AMS 6265 II NW—SERIES V821

5050
USGS
FILE COPY
TOPOGRAPHIC DIVISION