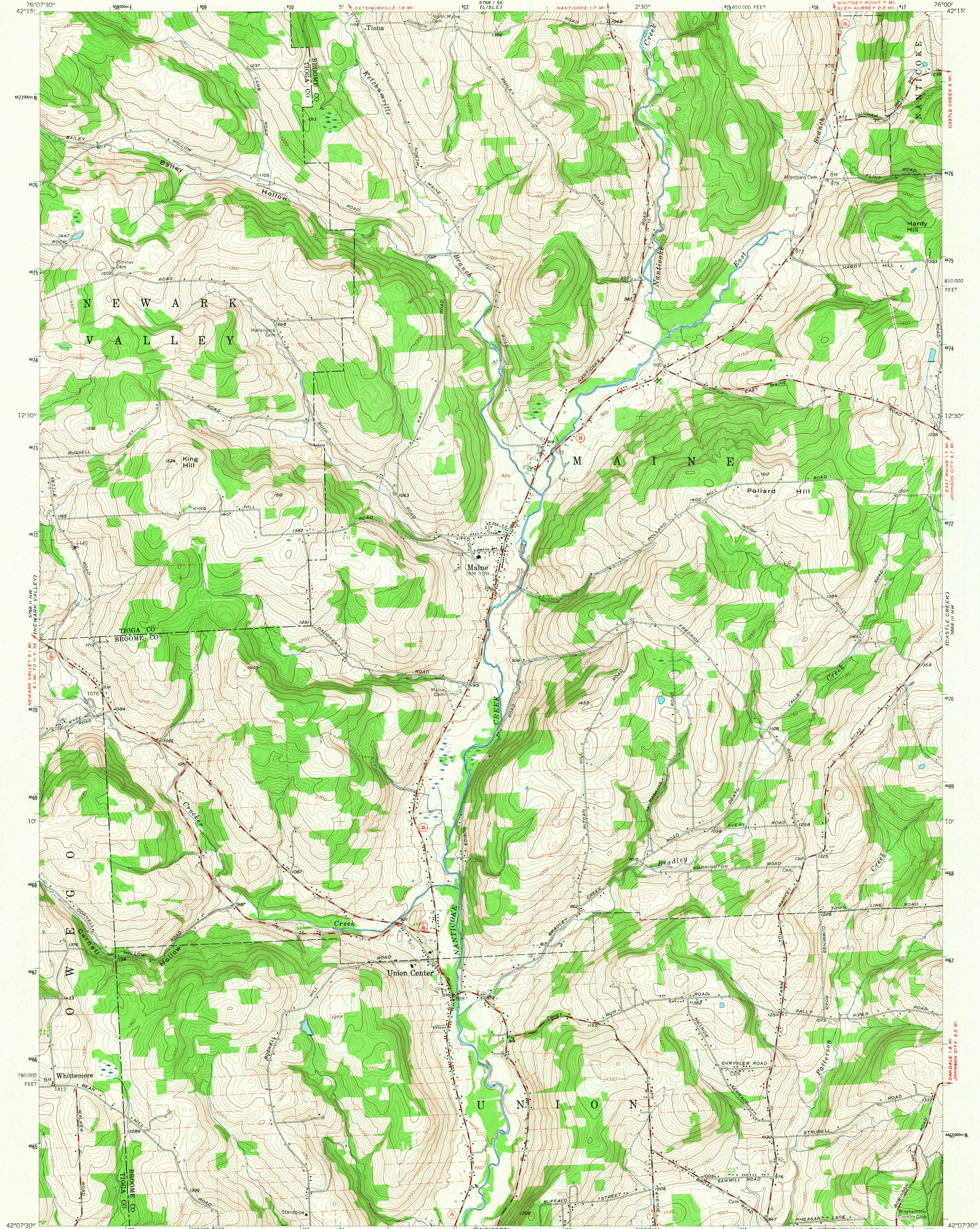


UNITED STATES
DEPARTMENT OF THE INTERIOR
GEOLOGICAL SURVEY

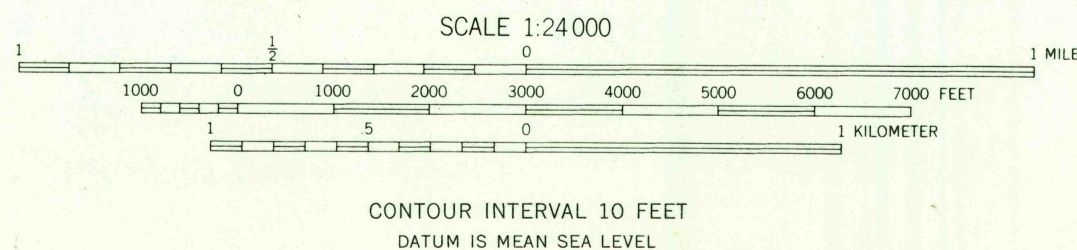
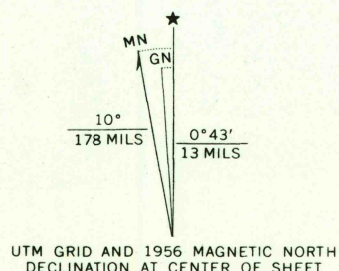
MAINE QUADRANGLE
NEW YORK
7.5 MINUTE SERIES (TOPOGRAPHIC)

NE/4 ENDICOTT 15' QUADRANGLE
WHITNEY POINT 7 MI.
GLEN AUBREY 0.5 MI.

WHITNEY POINT
CASTLE CREEK 5 MI.



Mapped, edited, and published by the Geological Survey
Control by USGS and USC&GS
Topography from aerial photographs by multiplex methods
Aerial photographs taken 1948. Field check 1956
Polyconic projection. 1927 North American datum
10,000-foot grid based on New York coordinate system,
central zone
1000-meter Universal Transverse Mercator grid ticks,
zone 18, shown in blue
Fine red dashed lines indicate selected fence and field lines
visible on aerial photographs. This information is unchecked



THIS MAP COMPLIES WITH NATIONAL MAP ACCURACY STANDARDS
FOR SALE BY U.S. GEOLOGICAL SURVEY, WASHINGTON, D.C. 20242
A FOLDER DESCRIBING TOPOGRAPHIC MAPS AND SYMBOLS IS AVAILABLE ON REQUEST

USGS
Historical File
Topographic Division



ROAD CLASSIFICATION
Medium-duty ——— Light-duty ———
Unimproved dirt ———
State Route ———

U.S.G.S.

FILE COPY
TOPOGRAPHIC DIVISION

MAINE, N. Y.
NE/4 ENDICOTT 15' QUADRANGLE
N 42° 07' 30" — W 76° 00' 00"
1956
AMS 5768 II NE—SERIES V821

3620
FEB 24 1957