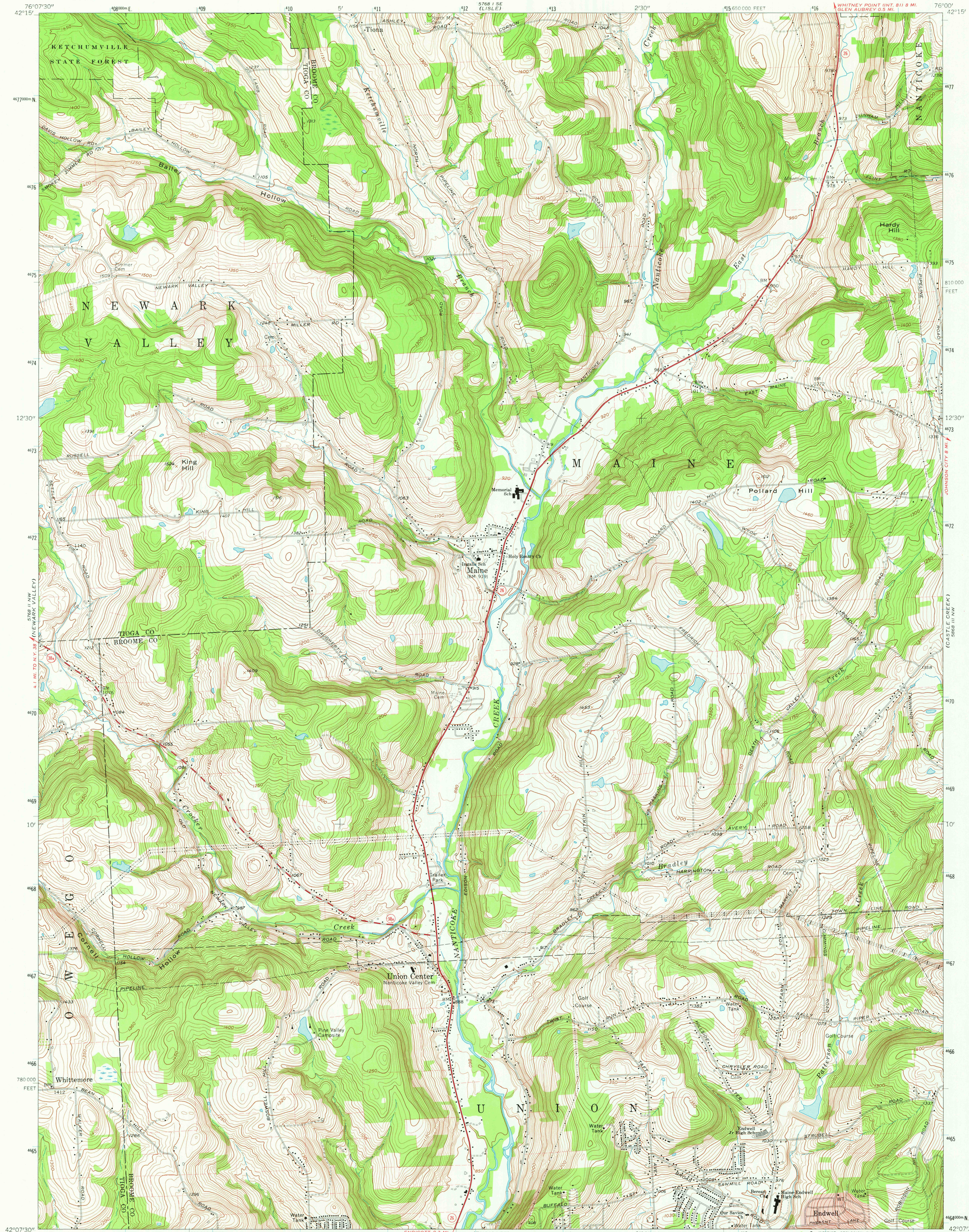


5768 I SE
(RICHFORD)

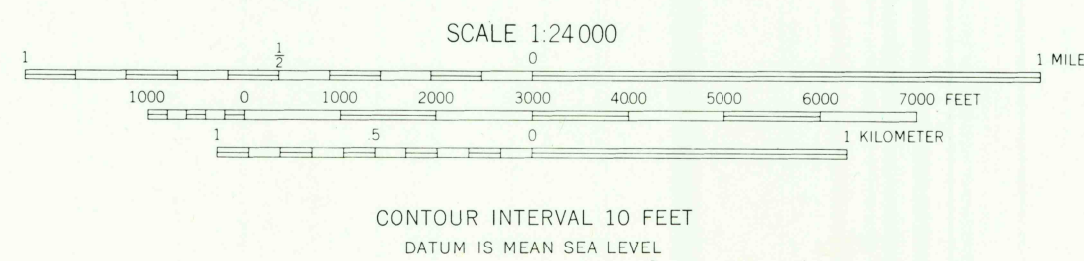
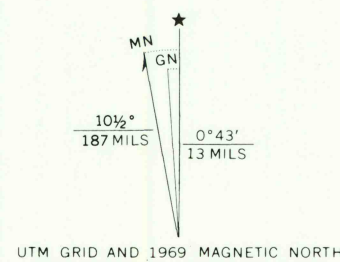
UNITED STATES
DEPARTMENT OF THE INTERIOR
GEOLOGICAL SURVEY

MAINE QUADRANGLE
NEW YORK
7.5 MINUTE SERIES (TOPOGRAPHIC)
NE/4 ENDICOTT 15' QUADRANGLE

5768 I SE
(WHITNEY POINT)



Mapped, edited, and published by the Geological Survey
Revised in cooperation with New York
Department of Transportation
Control by USGS and USC&GS
Topography by photogrammetric methods from aerial
photographs taken 1948. Field checked 1956. Revised
from aerial photographs taken 1968. Field checked 1969
Polyconic projection. 1927 North American datum
10,000-foot grid based on New York coordinate system,
central zone
1000-meter Universal Transverse Mercator grid ticks,
zone 18, shown in blue
Fine red dashed lines indicate selected fence and field lines where
generally visible on aerial photographs. This information is unchecked
Red tint indicates area in which only landmark buildings are shown



ROAD CLASSIFICATION
Primary highway, all weather. Light-duty road, all weather,
hard surface. Improved surface.
Secondary highway, all weather. Unimproved road, fair or dry
weather.
State Route

MAINE, N. Y.
NE/4 ENDICOTT 15' QUADRANGLE
N 4207.5-W 7500/7.5
1969
AMS 5768 II NE-SERIES V821

SEP 24 1982
1969