

5768 1 SE  
(LISLE)

5768 1 SE  
(LISLE)

5768 1 SE  
(LISLE)

5768 1 SE  
(LISLE)

5768 1 SE  
(LISLE)

5768 1 SE  
(LISLE)

5768 1 SE  
(LISLE)

5768 1 SE  
(LISLE)

5768 1 SE  
(LISLE)

5768 1 SE  
(LISLE)

5768 1 SE  
(LISLE)

5768 1 SE  
(LISLE)

5768 1 SE  
(LISLE)

5768 1 SE  
(LISLE)

5768 1 SE  
(LISLE)

5768 1 SE  
(LISLE)

5768 1 SE  
(LISLE)

5768 1 SE  
(LISLE)

5768 1 SE  
(LISLE)

5768 1 SE  
(LISLE)

5768 1 SE  
(LISLE)

5768 1 SE  
(LISLE)

5768 1 SE  
(LISLE)

5768 1 SE  
(LISLE)

5768 1 SE  
(LISLE)

5768 1 SE  
(LISLE)

5768 1 SE  
(LISLE)

5768 1 SE  
(LISLE)

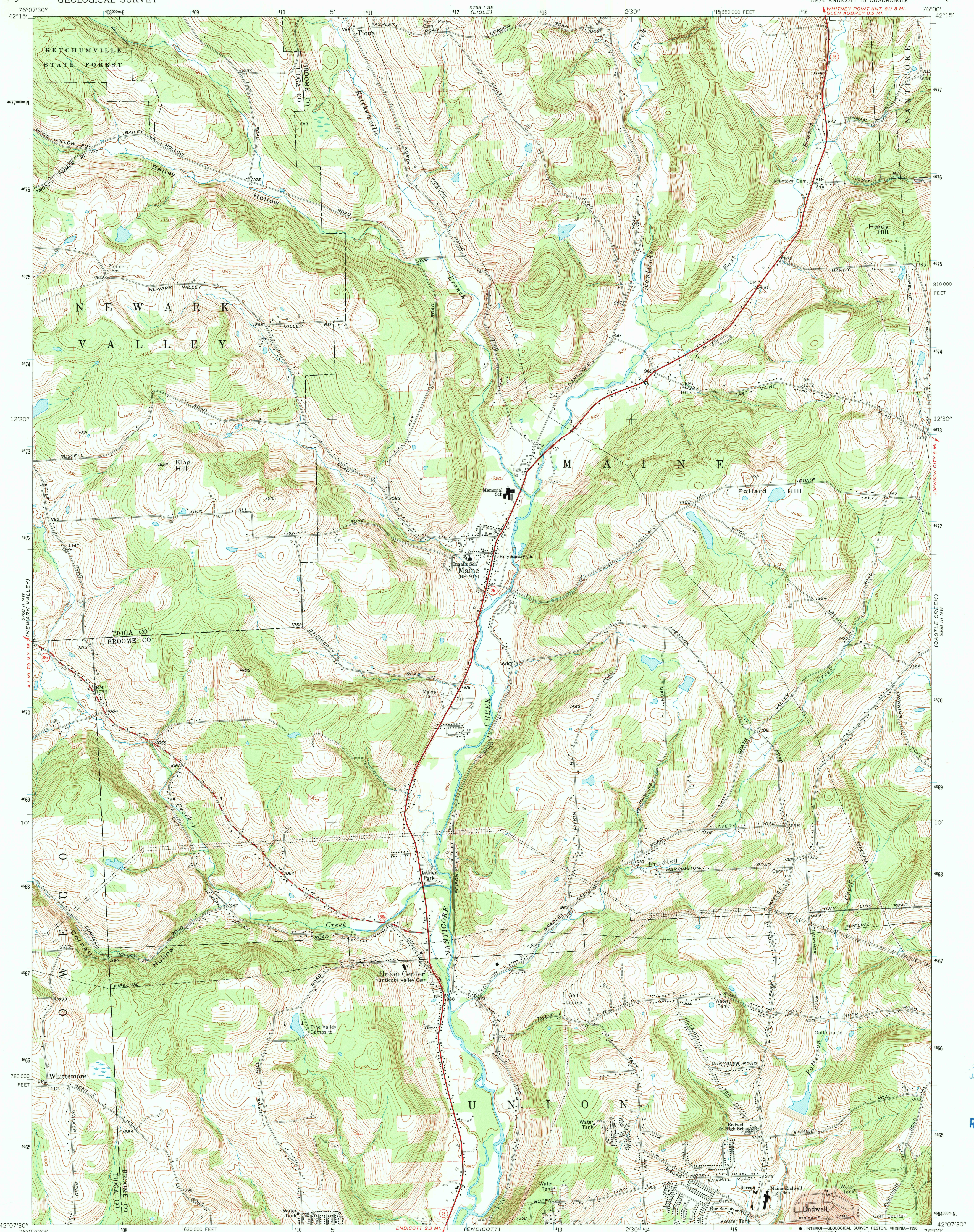
5768 1 SE  
(LISLE)

5768 1 SE  
(LISLE)

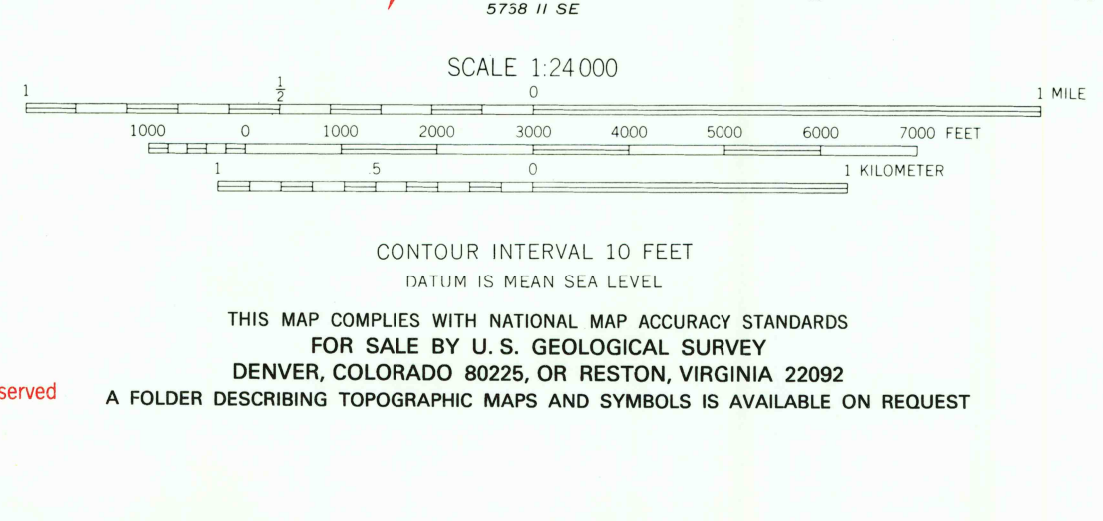
5768 1 SE  
(LISLE)

5768 1 SE  
(LISLE)

5768 1 SE  
(LISLE)



Mapped, edited, and published by the Geological Survey  
Revised in cooperation with New York  
Department of Transportation  
Control by USGS and USC&GS  
Topography by photogrammetric methods from aerial  
photographs taken 1948. Field checked 1956. Revised  
from aerial photographs taken 1968. Field checked 1969  
Polyconic projection. 1927 North American datum  
10,000-foot grid based on New York coordinate system,  
central zone  
1000-meter Universal Transverse Mercator grid ticks,  
zone 18, shown in blue  
Fine red dashed lines indicate selected fence and field lines where  
generally visible on aerial photographs. This information is unchecked  
Red tint indicates area in which only landmark buildings are shown



ROAD CLASSIFICATION  
Primary highway, all weather, hard surface  
Secondary highway, all weather, hard surface  
Light duty road, all weather, improved surface  
Unimproved road, fair or dry weather  
State Route  
MAINE, N. Y.  
NE 1/4 ENDICOTT 15' QUADRANGLE  
N 4207.5—W 7600/7.5  
1969  
AMS 5768 11 NE—SERIES V821  
PHOTOINSPECTED 1976

USGS NMD HISTORICAL MAP  
MAY 13 1991  
REC'D FILE COPY