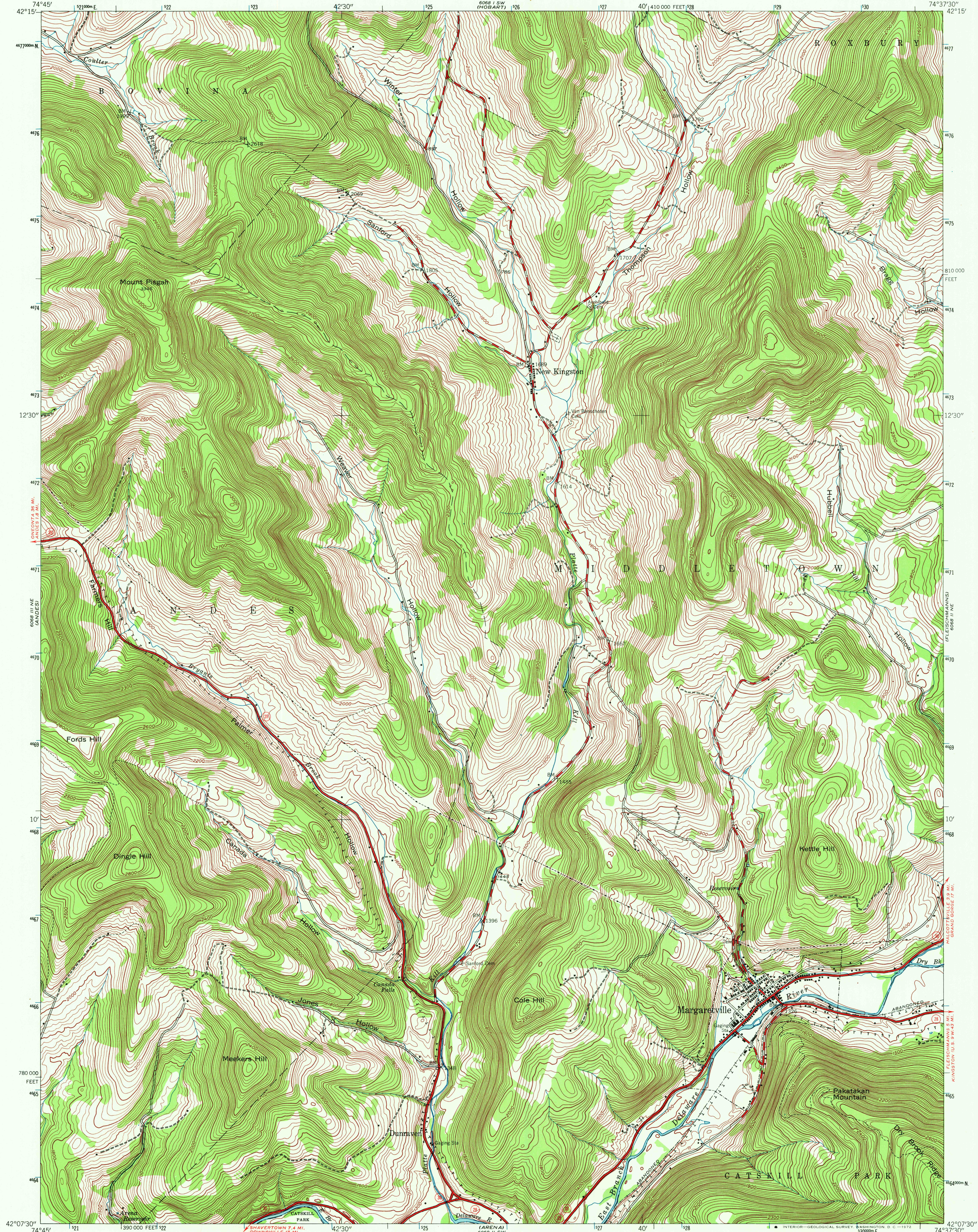
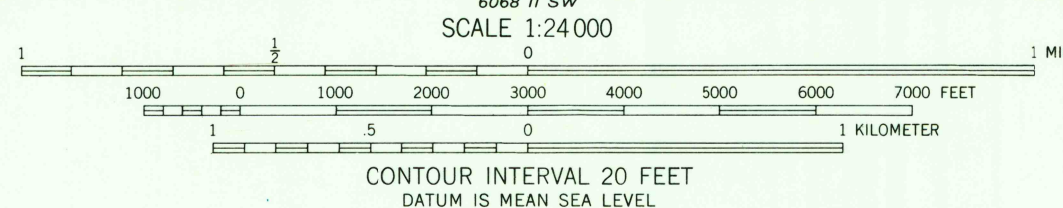
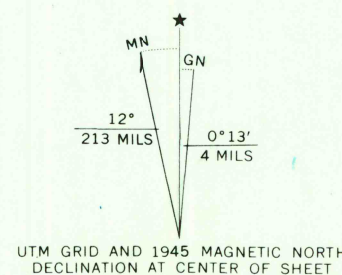


UNITED STATES
DEPARTMENT OF THE INTERIOR
GEOLOGICAL SURVEY

MARGARETVILLE QUADRANGLE
NEW YORK-DELAWARE CO.
7.5 MINUTE SERIES (TOPOGRAPHIC)
NW/4 MARGARETVILLE 15' QUADRANGLE



Mapped by the Army Map Service
Published for civil use by the Geological Survey
Control by USC&GS and TVA
Topography by photogrammetric methods from aerial
photographs taken 1943. Field checked 1945
Polyconic projection, 1927 North American datum
10,000-foot grid based on New York coordinate system,
east zone
1000-meter Universal Transverse Mercator grid ticks,
zone 18, shown in blue



ROAD CLASSIFICATION
Heavy-duty ——— Light-duty ———
Medium-duty ——— Unimproved dirt ———
State Route



MARGARETVILLE, N. Y.
NW/4 MARGARETVILLE 15' QUADRANGLE
N4207.5-W7437.5/7.5

1945
AMS 6068 II NW-SERIES V821

THIS MAP COMPLIES WITH NATIONAL MAP ACCURACY STANDARDS
FOR SALE BY U. S. GEOLOGICAL SURVEY, WASHINGTON, D. C. 20242
A FOLDER DESCRIBING TOPOGRAPHIC MAPS AND SYMBOLS IS AVAILABLE ON REQUEST

OCT 27 1972

5015