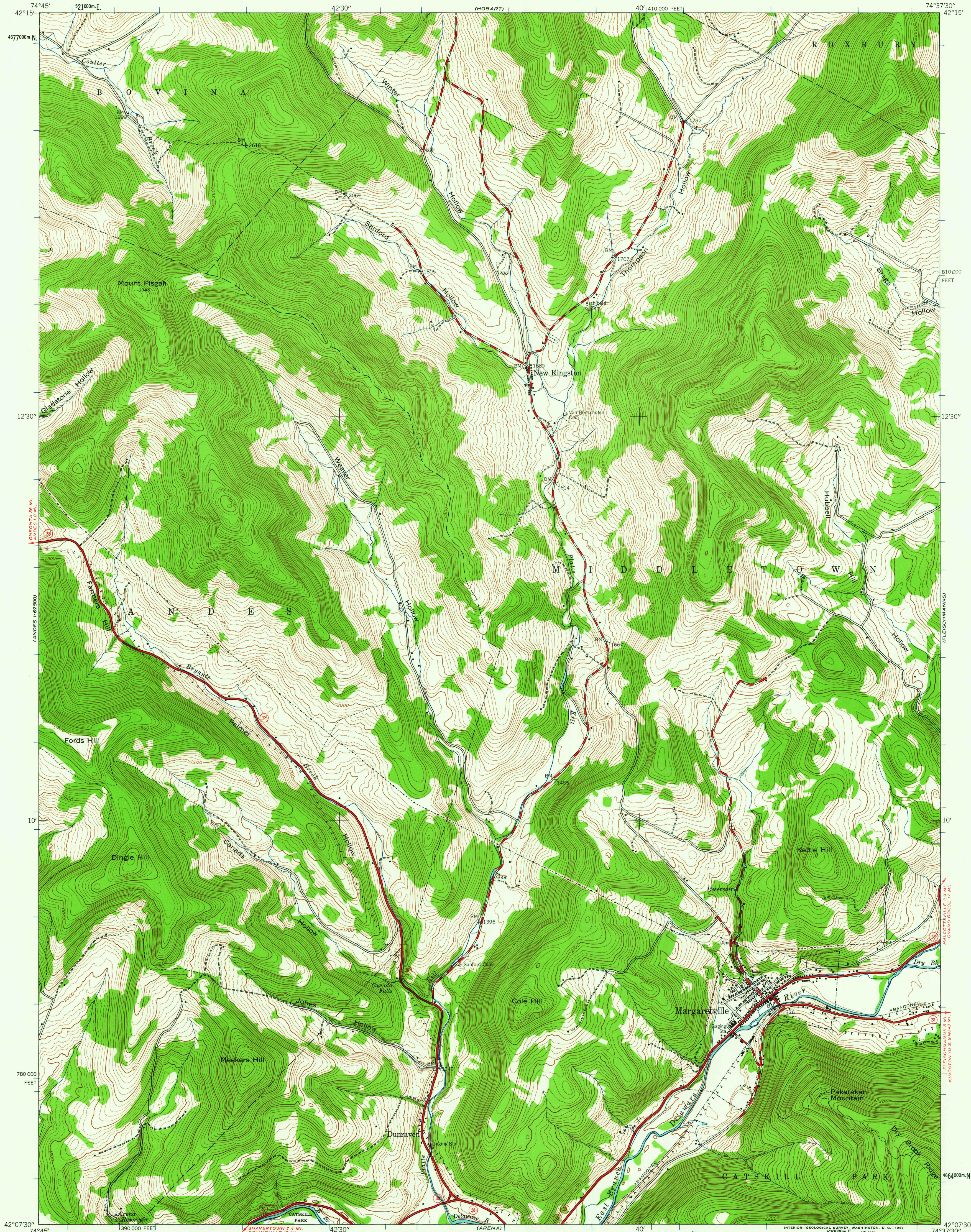


UNITED STATES  
DEPARTMENT OF THE INTERIOR  
GEOLOGICAL SURVEY

MARGARETVILLE QUADRANGLE  
NEW YORK-DELAWARE CO.  
7.5 MINUTE SERIES (TOPOGRAPHIC)  
NW 1/4 MARGARETVILLE 15' QUADRANGLE



Map by the Army Map Service  
Published for civil use by the Geological Survey  
Control by USC&GS and TVA  
Topography by photogrammetric methods from aerial  
photographs taken 1943. Field checked 1945  
Polyconic projection. 1927 North American datum  
10,000-foot grid based on New York coordinate system,  
east zone  
1000-meter Universal Transverse Mercator grid ticks,  
zone 18, shown in blue

12°  
TRUE NORTH  
MAGNETIC NORTH  
APPROXIMATE MEAN  
DECLINATION, 1945

SCALE 1:24,000  
1 1000 2000 3000 4000 5000 6000 7000 FEET  
1 KILOMETER  
CONTOUR INTERVAL 20 FEET  
DATUM IS MEAN SEA LEVEL

USGS  
Historical File  
Topographic Division

ROAD CLASSIFICATION  
Heavy-duty ——— Light-duty ———  
Medium-duty ——— Unimproved dirt ———  
State Route



MARGARETVILLE, N. Y.  
NW 1/4 MARGARETVILLE 15' QUADRANGLE  
N4207.5-W7437.5/7.5

1945

THIS MAP COMPLIES WITH NATIONAL MAP ACCURACY STANDARDS  
FOR SALE BY U. S. GEOLOGICAL SURVEY, WASHINGTON 25, D. C.  
A FOLDER DESCRIBING TOPOGRAPHIC MAPS AND SYMBOLS IS AVAILABLE ON REQUEST

MAY 28 1963

3975