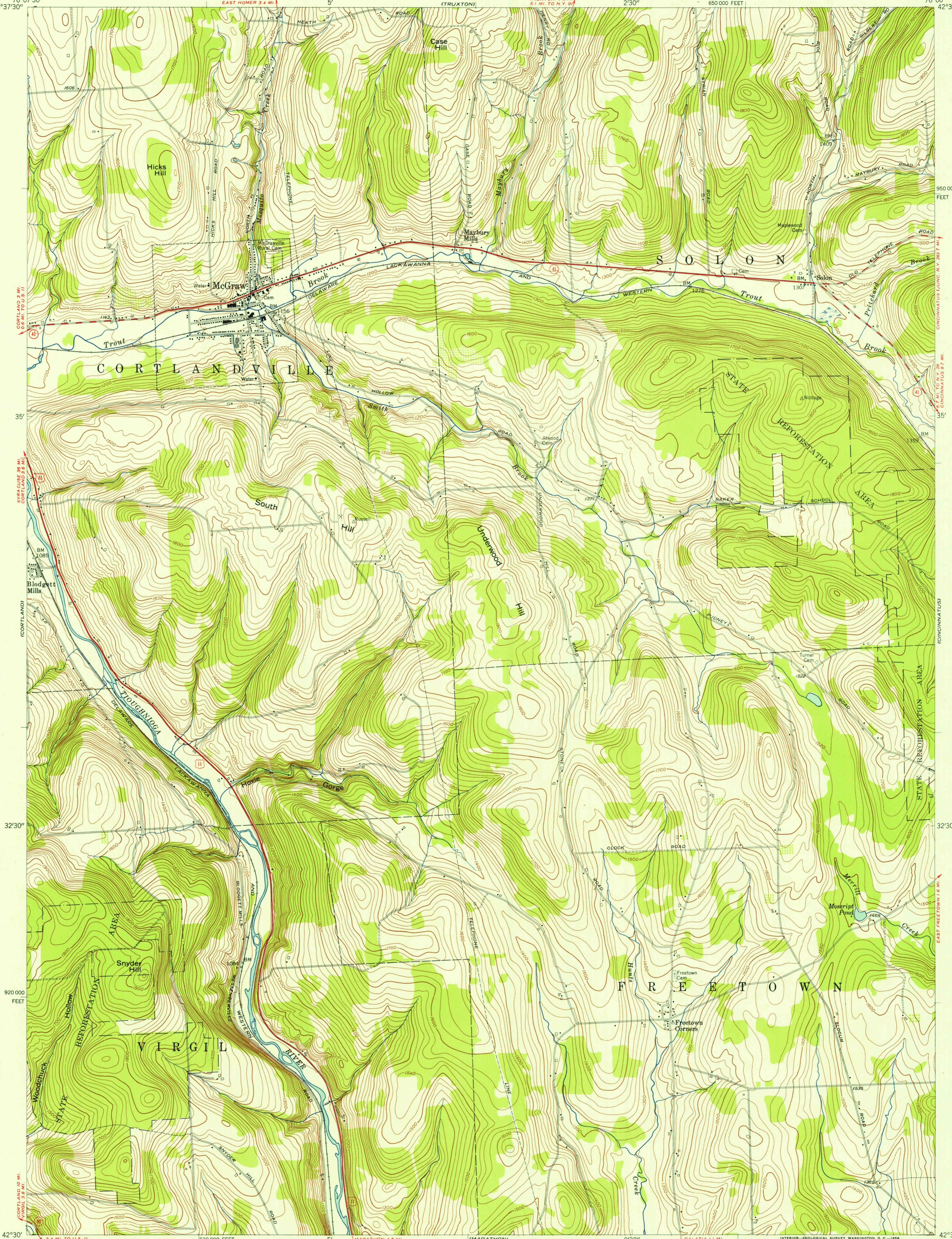


76°07'30"
42°37'30"

76°00'
42°37'30"

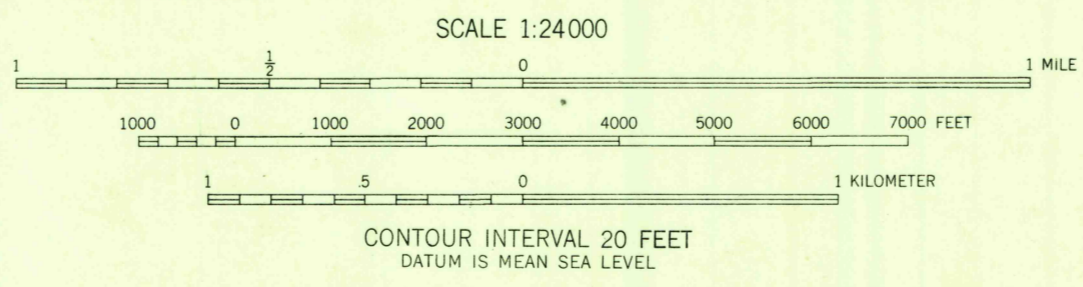
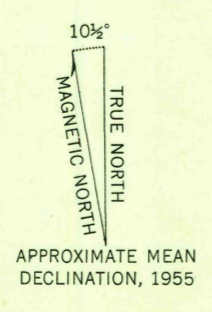


U.S.G.S.
FILE COPY
TOPOGRAPHIC DIVISION

USGS Library
Reston, VA
Topo Archive

U.S.G.S.
FILE COPY
TOPOGRAPHIC DIVISION

Mapped by the Army Map Service
Edited and published by the Geological Survey
Control by USGS, USC&GS, USCE, and TVA
Topography from aerial photographs by photogrammetric
methods. Aerial photographs taken 1942. Field check 1944
Culture revised by the Geological Survey 1955
Polyconic projection. 1927 North American datum
10,000-foot grid based on New York coordinate system,
central zone



ROAD CLASSIFICATION

Heavy-duty	Light-duty
Medium-duty	Unimproved dirt
U.S. Route	State Route



USGS
Historical File
Topographic Division

MC GRAW, N. Y.
SE/4 CORTLAND 15' QUADRANGLE
N4230—W7600/7.5
1955

THIS MAP COMPLIES WITH NATIONAL MAP ACCURACY STANDARDS
FOR SALE BY U. S. GEOLOGICAL SURVEY, WASHINGTON 25, D. C.
A FOLDER DESCRIBING TOPOGRAPHIC MAPS AND SYMBOLS IS AVAILABLE ON REQUEST

OCT 29 1956
3085