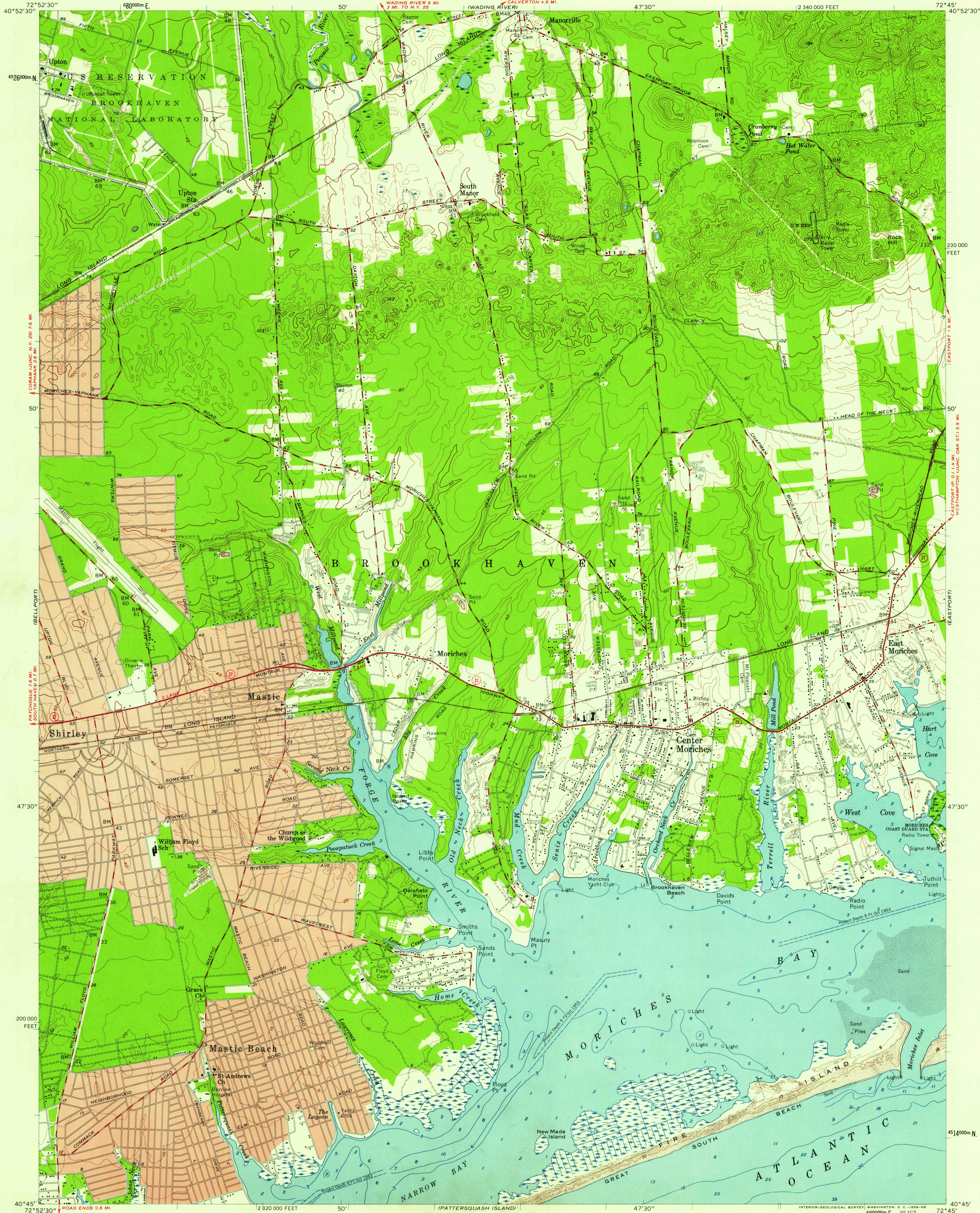


UNITED STATES
DEPARTMENT OF THE INTERIOR
GEOLOGICAL SURVEY

MORICHES QUADRANGLE
NEW YORK—SUFFOLK CO.
7.5 MINUTE SERIES (TOPOGRAPHIC)
SE/4 MORICHES 15' QUADRANGLE



Mapped, edited, and published by the Geological Survey
Control by USGS, USC&GS, and USCE
Culture and drainage in part compiled from aerial photographs
taken 1955. Topography by planetable surveys 1955-1957
Hydrography compiled from USC&GS charts 578 (1956)
and 1214 (1954)
Polyconic projection. 1927 North American datum
10,000-foot grid based on New York coordinate system,
Long Island zone
1000-meter Universal Transverse Mercator grid ticks,
zone 18, shown in blue
Fine red dashed lines indicate selected fence and field lines
visible on aerial photographs. This information is unchecked
Red tint indicates areas in which only
landmark buildings are shown

12°
TRUE NORTH
APPROXIMATE MEAN
DECLINATION, 1957

SCALE 1:24,000
1000 0 1000 2000 3000 4000 5000 6000 7000 FEET
1 5 0 5 10 KILOMETER
CONTOUR INTERVAL 10 FEET
DOTTED LINES REPRESENT 5-FOOT CONTOURS
DATUM IS MEAN SEA LEVEL
DEPTH CURVES AND SOUNDINGS IN FEET—DATUM IS MEAN LOW WATER
SHORELINE SHOWN REPRESENTS THE APPROXIMATE LINE OF MEAN HIGH WATER
THE MEAN RANGE OF TIDE IS APPROXIMATELY 2.0 FEET IN THE ATLANTIC OCEAN
AND 0.5 FEET IN MORICHES BAY
THIS MAP COMPLIES WITH NATIONAL MAP ACCURACY STANDARDS
FOR SALE BY U. S. GEOLOGICAL SURVEY, WASHINGTON 25, D. C.
A FOLDER DESCRIBING TOPOGRAPHIC MAPS AND SYMBOLS IS AVAILABLE ON REQUEST



ROAD CLASSIFICATION
Heavy-duty ——— Light-duty ———
Medium-duty ——— Unimproved dirt ———
○ State Route
USGS
Historical File
Topographic Division
MORICHES, N. Y.
SE/4 MORICHES 15' QUADRANGLE
N4045—W7245/7.5
1957

U.S.G.S.
FILE COPY
TOPOGRAPHIC DIVISION
NOV 10 1957