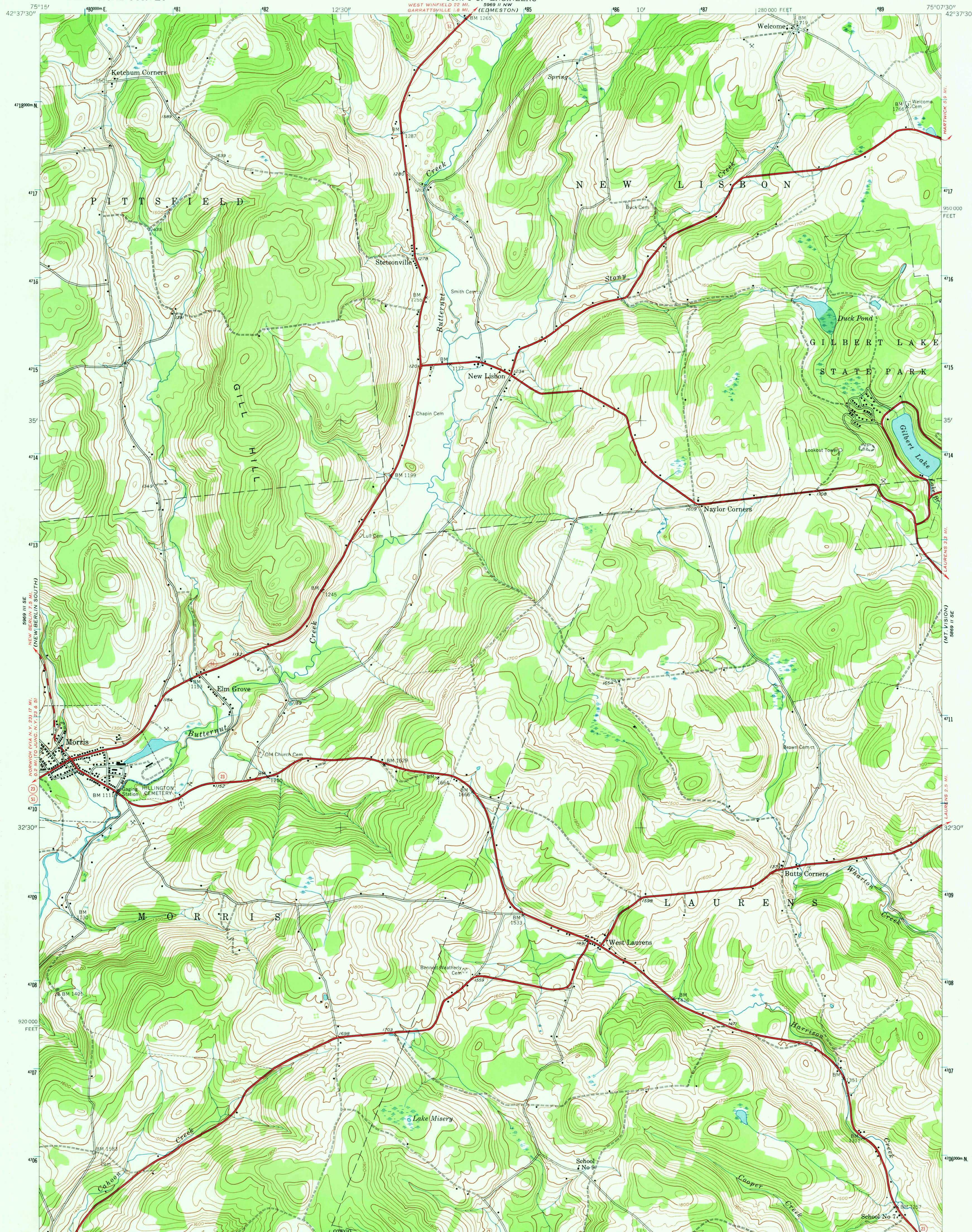


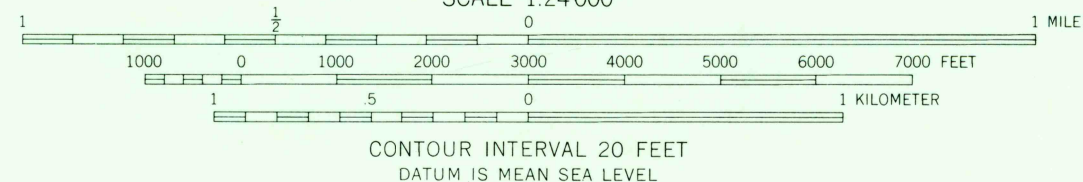
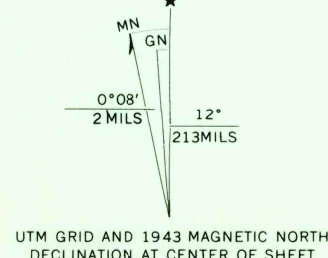
UNITED STATES
DEPARTMENT OF THE INTERIOR
GEOLOGICAL SURVEY

UNITED STATES
DEPARTMENT OF THE ARMY
CORPS OF ENGINEERS

MORRIS QUADRANGLE
NEW YORK—OTSEGO CO.
7.5 MINUTE SERIES (TOPOGRAPHIC)



Mapped by the Army Map Service
Published for civil use by the Geological Survey
Control by USGS, USC&GS, and TVA
Topography from aerial photographs by photogrammetric methods
Aerial photographs taken 1942. Field check 1943
Polyconic projection. 1927 North American datum
10,000-foot grid based on New York coordinate system, east zone
1000-meter Universal Transverse Mercator grid ticks,
zone 18, shown in blue



ROAD CLASSIFICATION
Heavy-duty ——— Light-duty ———
Medium-duty ——— Unimproved dirt ———
State Route ———

MORRIS, N. Y.

N 4230—W 7507.5/7.5

1943

AMS 5969 II SW—SERIES V821

THIS MAP COMPLIES WITH NATIONAL MAP ACCURACY STANDARDS
FOR SALE BY U. S. GEOLOGICAL SURVEY, WASHINGTON, D. C. 20242
A FOLDER DESCRIBING TOPOGRAPHIC MAPS AND SYMBOLS IS AVAILABLE ON REQUEST

NOV 8 1973

2030