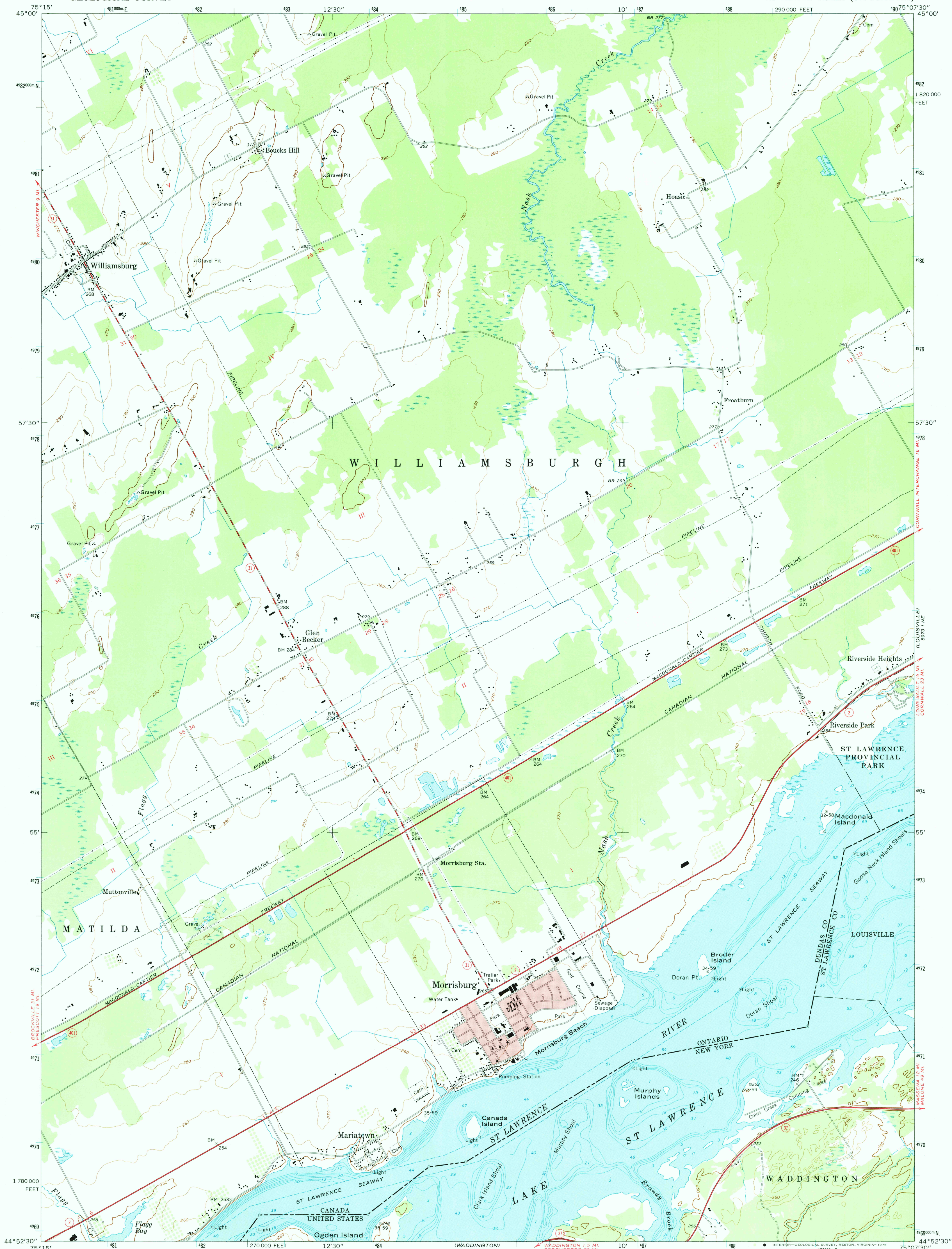
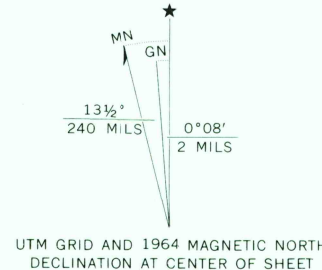


UNITED STATES  
DEPARTMENT OF THE INTERIOR  
GEOLOGICAL SURVEY

MORRISBURG QUADRANGLE  
ONTARIO-NEW YORK  
7.5 MINUTE SERIES (TOPOGRAPHIC)



Mapped by the Canadian Department of Energy  
Mines and Resources, and the U. S. Geological Survey  
Edited and published by the Geological Survey  
Control by USGS, USC&GS, International Boundary Commission,  
and the Surveys and Mapping Branch, Department of Mines and  
Technical Surveys  
Topography by photogrammetric methods. Canadian area  
from aerial photographs. Field checked 1964. U. S. area from  
aerial photographs taken 1963. Field checked 1964  
Selected hydrographic data compiled from U. S. Lake Survey  
Chart 12 (1971). This information is not intended for  
navigational purposes  
Projection and 10,000-foot grid ticks: New York coordinate  
system, east zone (transverse Mercator)  
1000-meter Universal Transverse Mercator grid ticks,  
zone 18, shown in blue. 1927 North American datum  
Red tint indicates areas in which only landmark buildings are shown



CONTOUR INTERVAL 10 FEET  
NATIONAL GEODETIC VERTICAL DATUM OF 1929  
DEPTH CURVES AND SOUNDINGS IN FEET  
DATUM IS RIVER SURFACE 239 FEET AT MORRISBURG

THIS MAP COMPLIES WITH NATIONAL MAP ACCURACY STANDARDS  
FOR SALE BY U. S. GEOLOGICAL SURVEY, RESTON, VIRGINIA 22092  
A FOLDER DESCRIBING TOPOGRAPHIC MAPS AND SYMBOLS IS AVAILABLE ON REQUEST



USGS  
Historical File  
Topographic Division

ROAD CLASSIFICATION  
Primary highway, hard surface  
Secondary highway, hard surface  
Light-duty road, hard or improved surface  
Unimproved road  
Interstate Route  
U. S. Route  
State Route

MORRISBURG, ONT. - N. Y.  
(FORMERLY MURPHY ISLAND)  
N4452.5-W7507.5/7.5

1964  
AMS 5973 1 NW-SERIES V821

JAN 9 1975

3,000