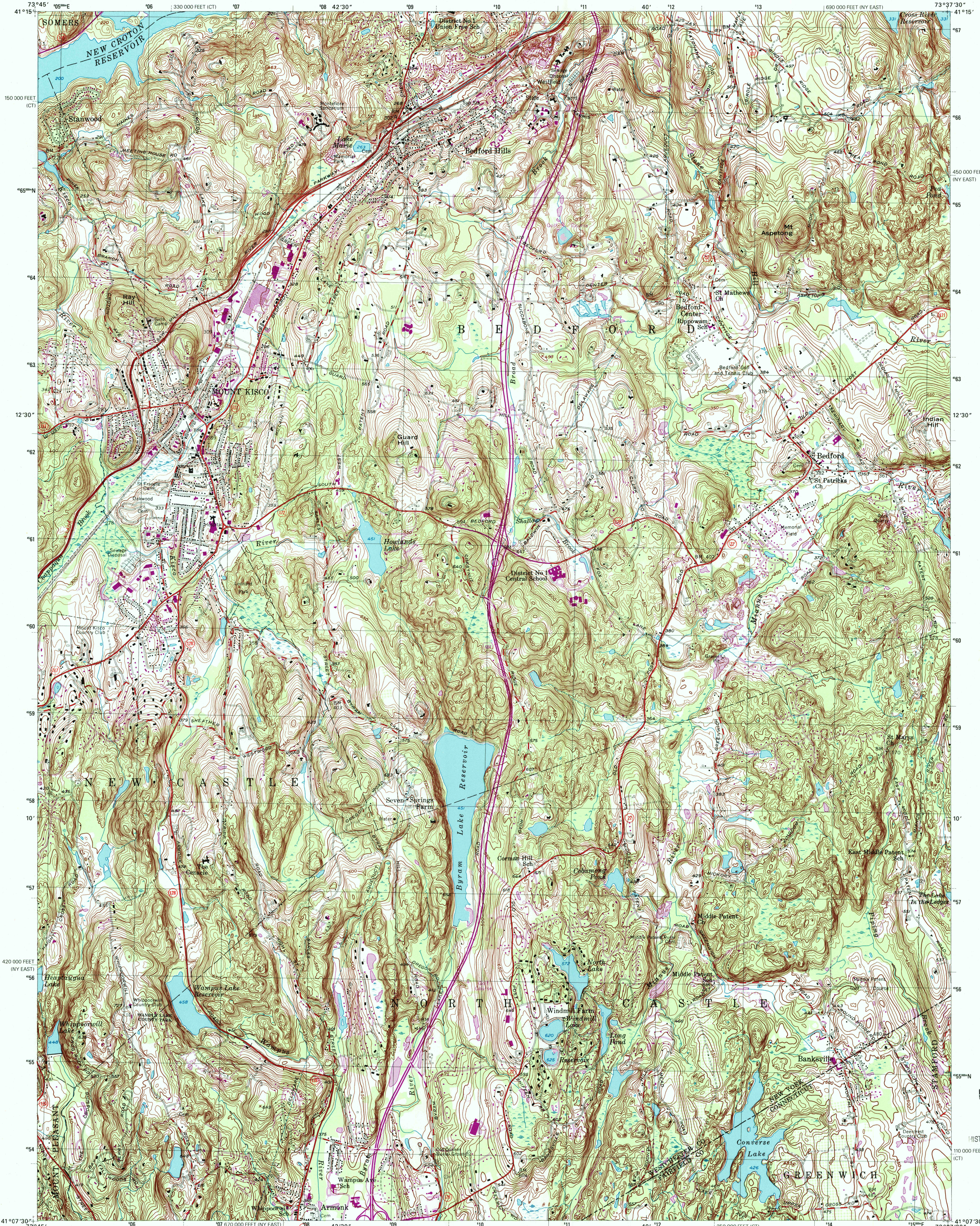




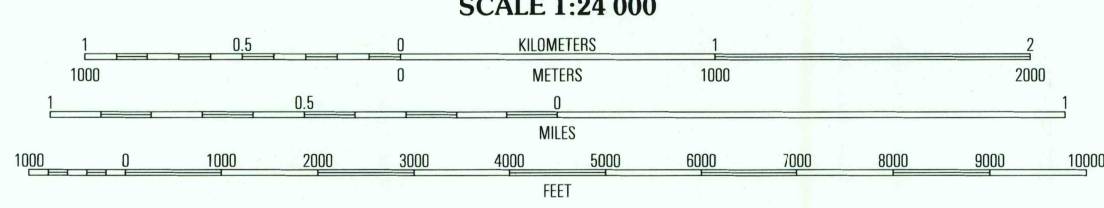
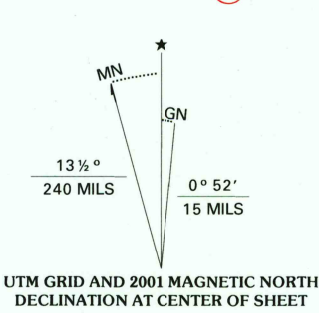
U.S. DEPARTMENT OF THE INTERIOR
U.S. GEOLOGICAL SURVEY

STATE OF NEW YORK
DEPARTMENT OF TRANSPORTATION

MOUNT KISCO QUADRANGLE
NEW YORK-CONNECTICUT
7.5-MINUTE SERIES (TOPOGRAPHIC)



Produced by the United States Geological Survey
Topography compiled 1949. Planimetry derived from imagery taken 1971 and other sources. Photoinspected using imagery dated 1998; no major culture or drainage changes observed. Survey control current as of 1955. Boundaries, other than corporate, revised 2000
North American Datum of 1927 (NAD 27)
Projection: New York coordinate system, east zone (transverse Mercator)
10 000-foot ticks: New York coordinate system, east zone and Connecticut coordinate system
1000-meter Transverse Mercator grid, zone 18
North American Datum of 1983 (NAD 83) is shown by dashed corner ticks. The values of the shift between NAD 27 and NAD 83 for 7.5-minute intersections are obtainable from National Geodetic Survey NADCON software
There may be private inholdings within the boundaries of the National or State reservations shown on this map
Information shown in purple may not meet USGS content standards and may conflict with previously mapped contours



SCALE 1:24 000
CONTOUR INTERVAL 10 FEET
NATIONAL GEODETIC VERTICAL DATUM OF 1929
TO CONVERT FROM FEET TO METERS, MULTIPLY BY 0.3048
THIS MAP COMPLIES WITH NATIONAL MAP ACCURACY STANDARDS
FOR SALE BY U.S. GEOLOGICAL SURVEY, P.O. BOX 25286, DENVER, COLORADO 80225
A FOLDER DESCRIBING TOPOGRAPHIC MAPS AND SYMBOLS IS AVAILABLE ON REQUEST



ROAD CLASSIFICATION
Primary highway
hard surface
Secondary highway
hard surface
Light-duty road, hard or improved surface
Unimproved road
Interstate Route
U.S. Route
State Route

1	2	3
4	5	6
7	8	9

1 Mohagan Lake
2 Croton Falls
3 Peach Lake
4 Ossining
5 Pound Ridge
6 White Plains
7 Glenville
8 Stamford

MOUNT KISCO, NY-CT
1998
NIMA 6266 II NW-SERIES V821

RECEIVED
MAR 31 2001
HISTORICAL MAP ARCHIVES

